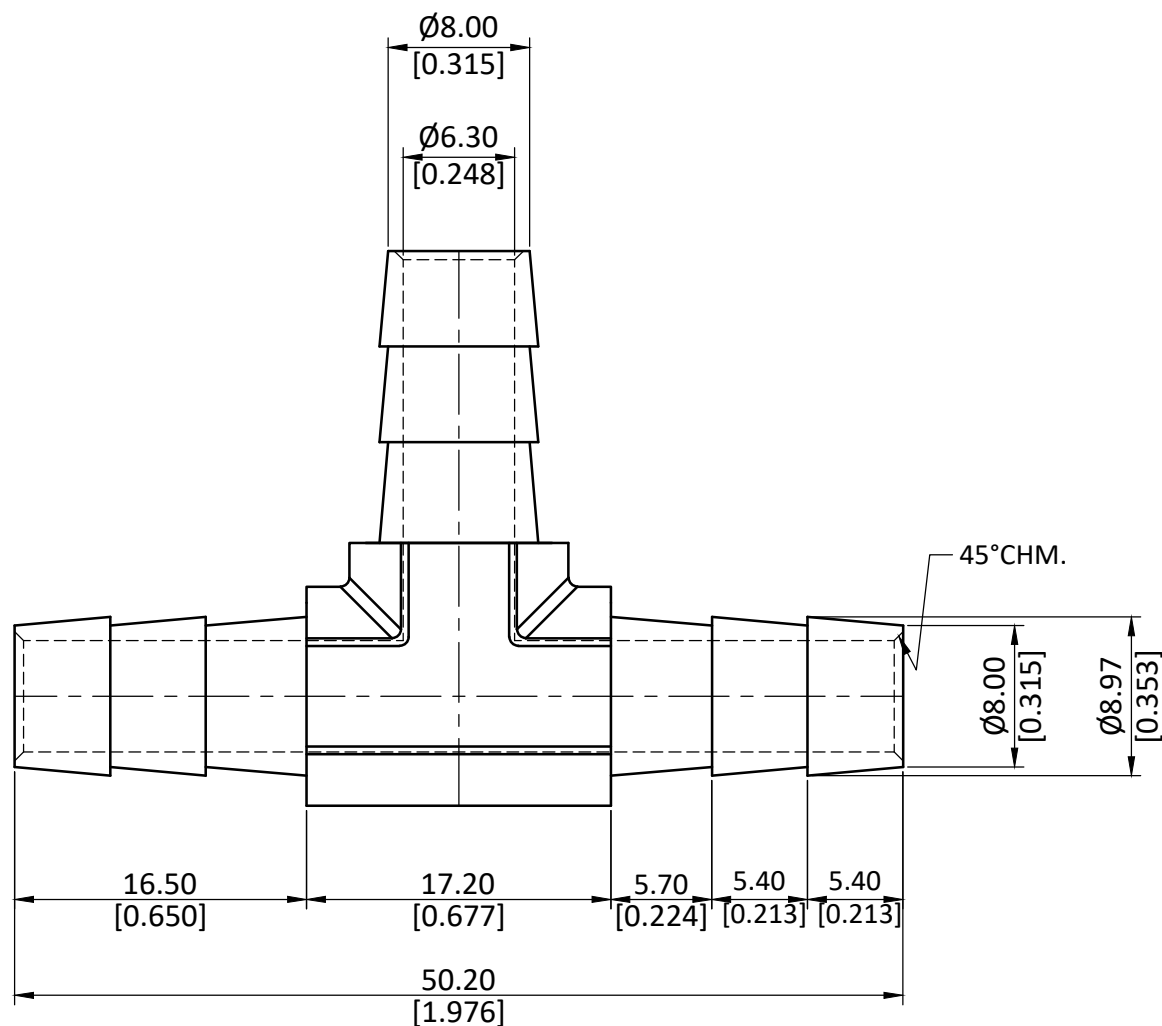
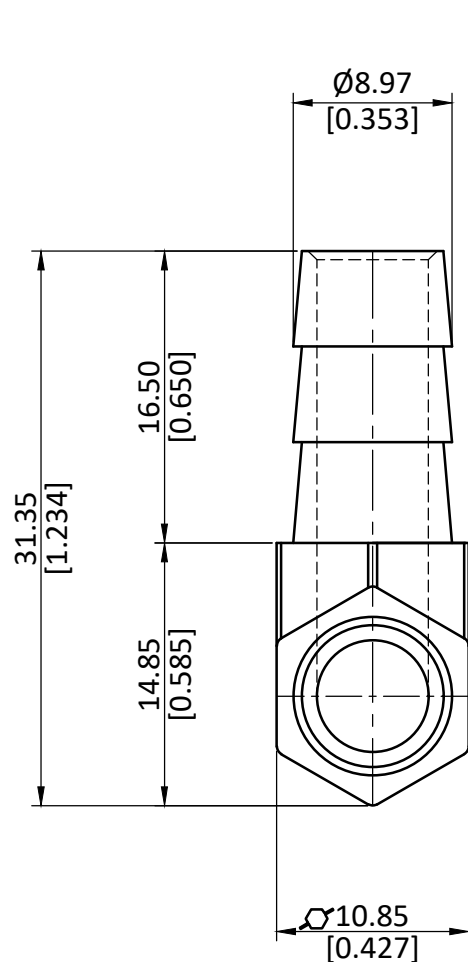


NOTE : This drawing contains proprietary and confidential information of Midland Industries...and shall not be copied, loaned or submitted to outside parties for examination without our prior consent.



ALL DIMENSION ARE IN MM & INCH.

ROD SIZE: NOT APPLICABLE.

PROCESS: NOT APPLICABLE.

ASSEMBLY: NOT APPLICABLE.

DRAWN

A.B.

11/01/2023

CHECKED

J.P.

11/01/2023

APPROVED

S.P.

11/01/2023

PART CODE:

707024-05

ITEM DESCRIPTION:

LF 7129T 5/16 HOSE BARB TEE

GRADE:

LF-CW510L

GENERAL TOLERANCE

MM ±0.25

INCH ±0.010

ANGLE ±1°

WEIGHT (gm):

23.20

SCALE:

N.T.S.

REVISION:

01