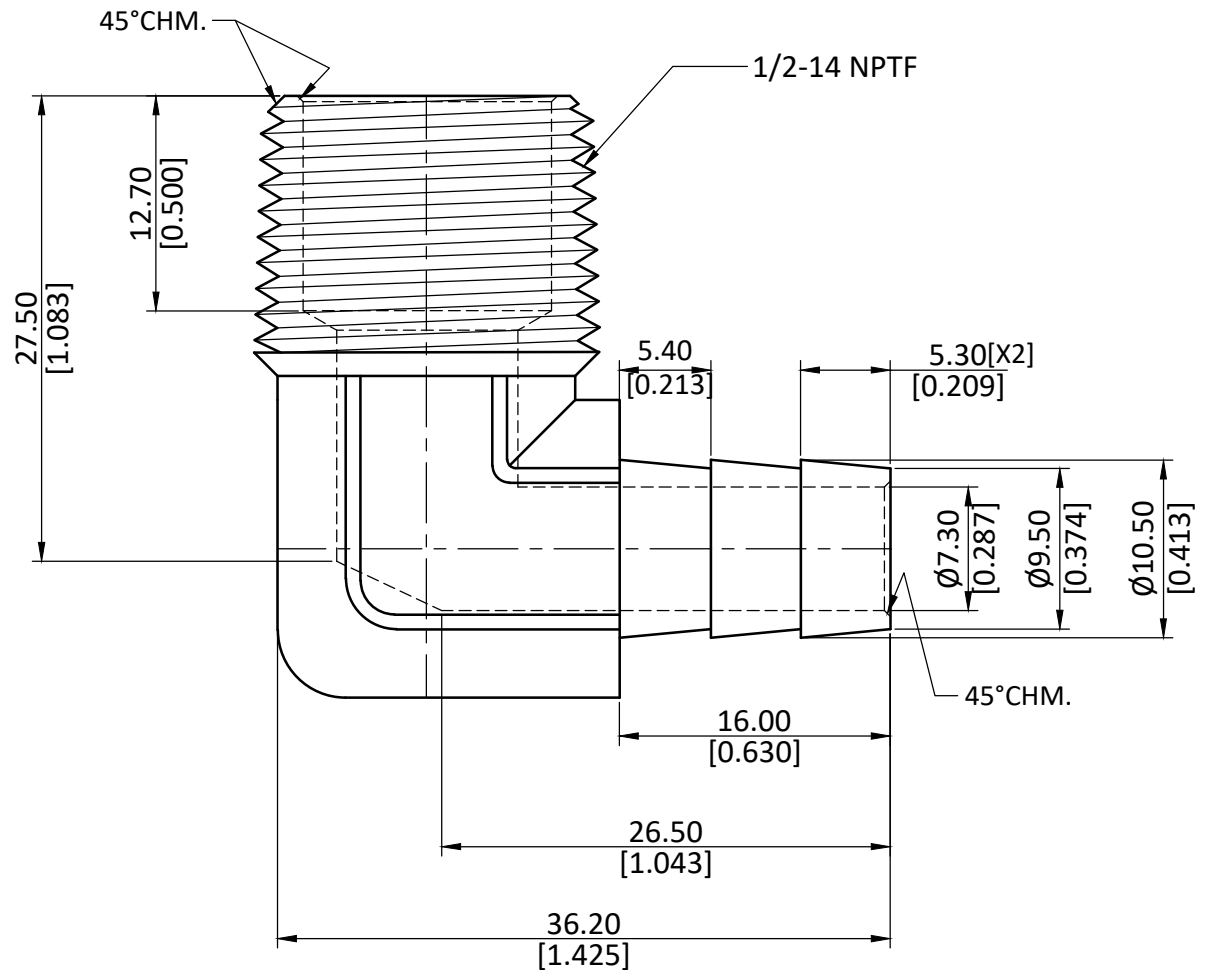
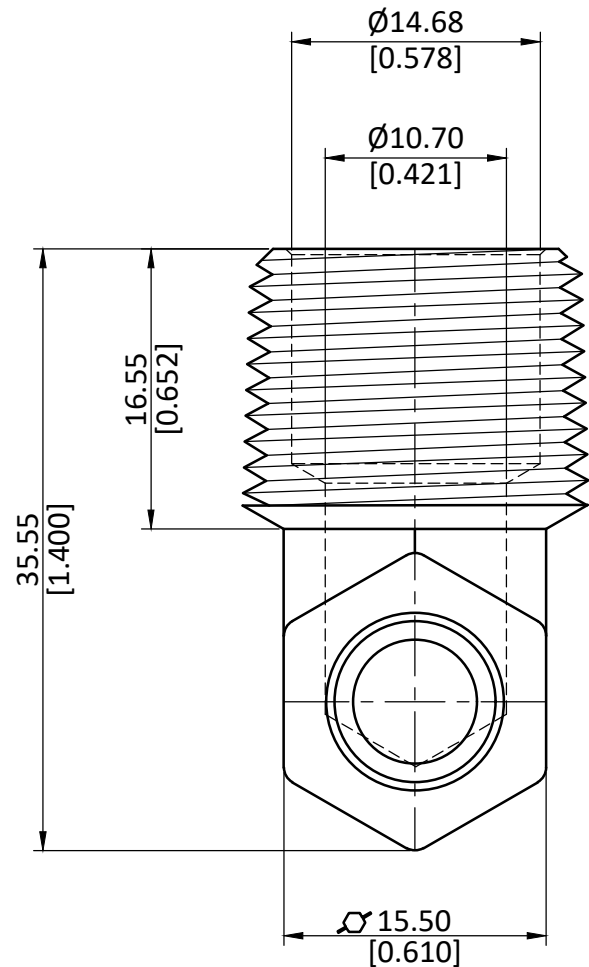


NOTE : This drawing contains proprietary and confidential information of Midland Industries...and shall not be copied, loaned or submitted to outside parties for examination without our prior consent.



ALL DIMENSION ARE IN MM & INCH.	DRAWN	A.B.	11/01/2023	GRADE: LF-CW510L	GENERAL TOLERANCE MM ±0.25 INCH ±0.010 ANGLE ±1°	
	CHECKED	J.P.	11/01/2023			
	APPROVED	S.P.	11/01/2023			
ROD SIZE: NOT APPLICABLE.	PART CODE: 707020-0608		ITEM DESCRIPTION: LF 7129E 3/8 X 1/2 ELBOW		WEIGHT (gm): 52.03	
PROCESS: NOT APPLICABLE.						
ASSEMBLY: NOT APPLICABLE.					SCALE: N.T.S.	REVISION: 01