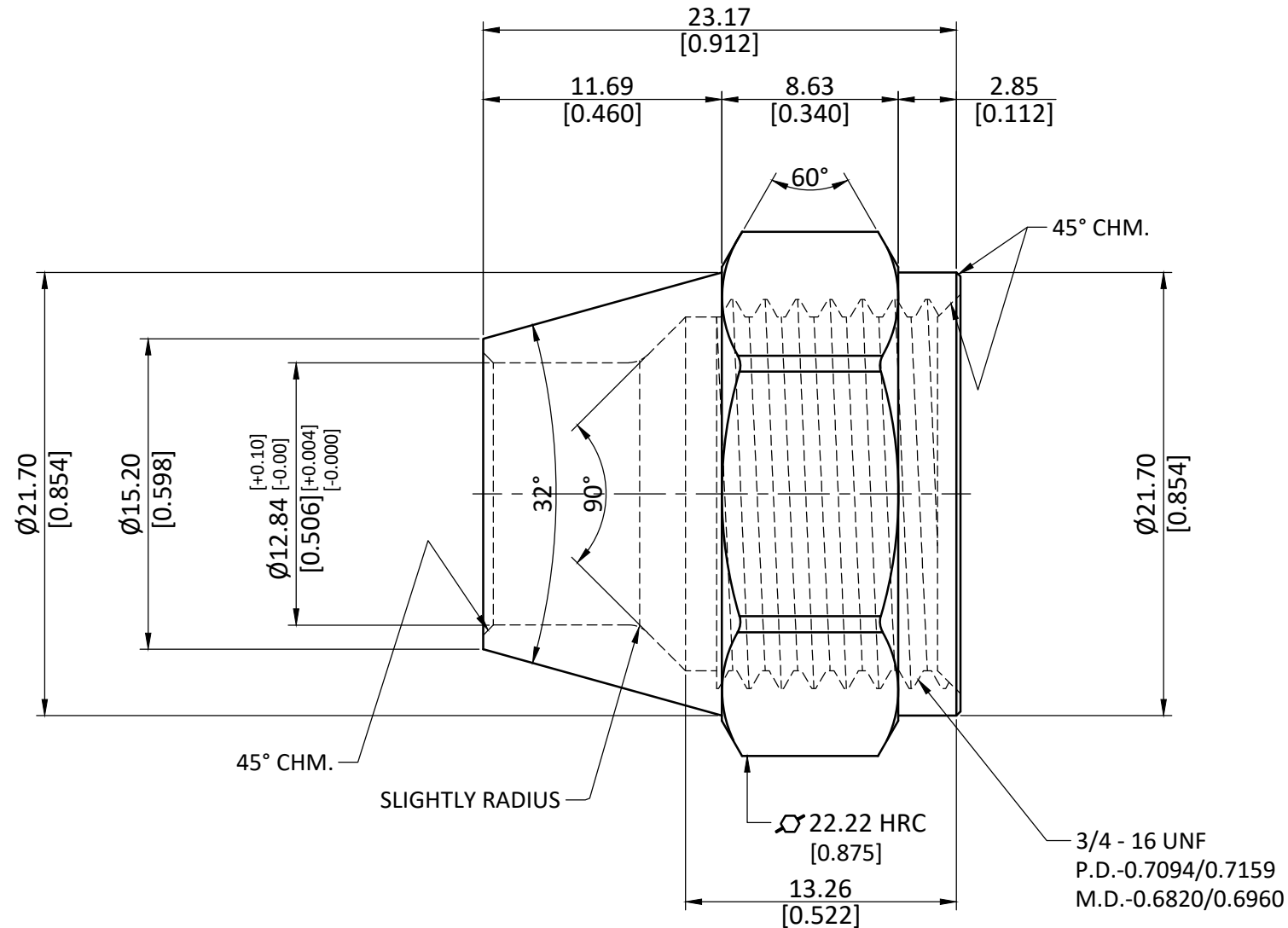


NOTE : This drawing contains proprietary and confidential information of Midland Industries...and shall not be copied, loaned or submitted to outside parties for examination without our prior consent.



ALL DIMENSION ARE IN MM & INCH.	DRAWN	A.B.	11/01/2023	GRADE:  LF-CW510L	GENERAL TOLERANCE MM    ±0.25 INCH   ±0.010 ANGLE   ±1°	
	CHECKED	J.P.	11/01/2023			
ROD SIZE: 22.22 Hex RC	APPROVED	S.P.	11/01/2023			
PROCESS: NOT APPLICABLE.	PART CODE: 704014-08		ITEM DESCRIPTION: LF 7441S 1/2 SHORT NUT		WEIGHT (gm): 26.40	
ASSEMBLY: NOT APPLICABLE.					SCALE: N.T.S.	REVISION: 01