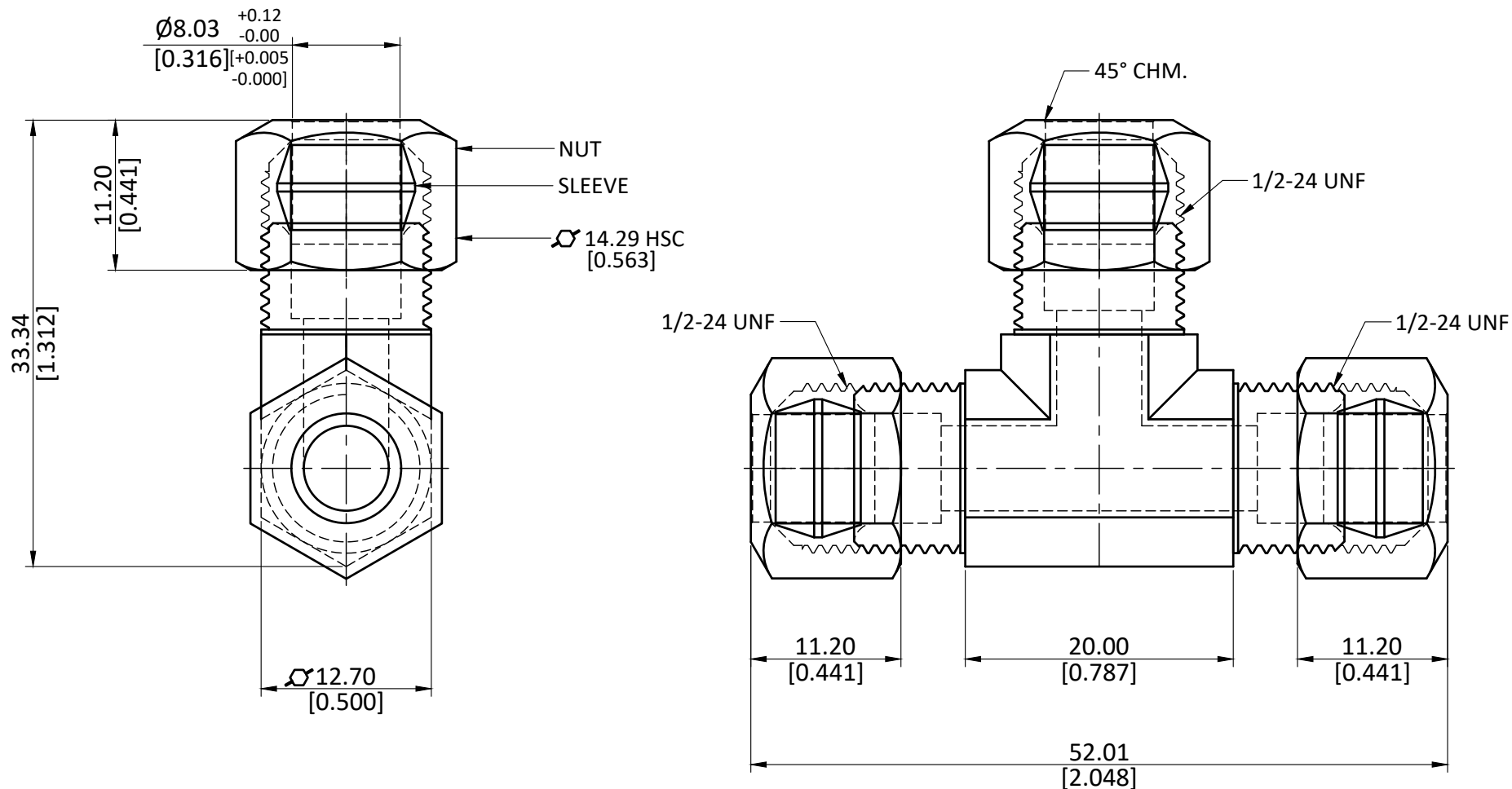


NOTE : This drawing contains proprietary and confidential information of Midland Industries...and shall not be copied, loaned or submitted to outside parties for examination without our prior consent.



ALL DIMENSION ARE IN MM & INCH.

ROD SIZE: NOT APPLICABLE.

PROCESS: ASSEMBLY

ASSEMBLY: ASSEMBLE WITH 700060-05 & 00061-05 [ASSEMBLY WEIGHT(gm) : 59.40]

DRAWN

A.B.

11/01/2023

CHECKED

J.P.

11/01/2023

APPROVED

S.P.

11/01/2023

PART CODE:

700064-05

ITEM DESCRIPTION:

LF 764 5/16 TEE

GRADE:

LF-CW510L

GENERAL TOLERANCE

MM ± 0.25
INCH ± 0.010
ANGLE $\pm 1^\circ$

WEIGHT (gm):

35.70

SCALE:
N.T.S.

REVISION:
01