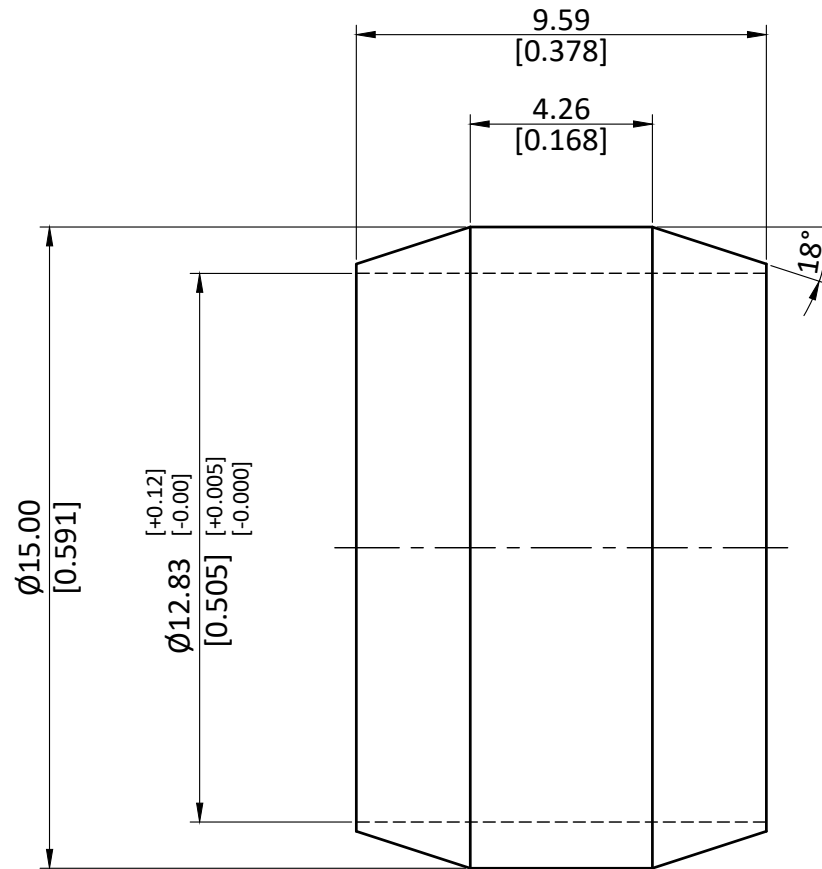


NOTE : This drawing contains proprietary and confidential information of Midland Industries...and shall not be copied, loaned or submitted to outside parties for examination without our prior consent.



ALL DIMENSION ARE IN MM & INCH.

ROD SIZE: 15.00 x 12.83 Round Pipe

PROCESS: NOT APPLICABLE.

ASSEMBLY: NOT APPLICABLE.

DRAWN

A.M.

11/01/2023

GRADE:

GENERAL TOLERANCE

CHECKED

J.P.

11/01/2023

LF-CuZn37

MM ± 0.15

INCH ± 0.006

ANGLE ± 1

PART CODE:

700060-08

ITEM DESCRIPTION:

LF 760 1/2 SLEEVE

WEIGHT (gm):

2.63

SCALE:

N.T.S.

REVISION:

01