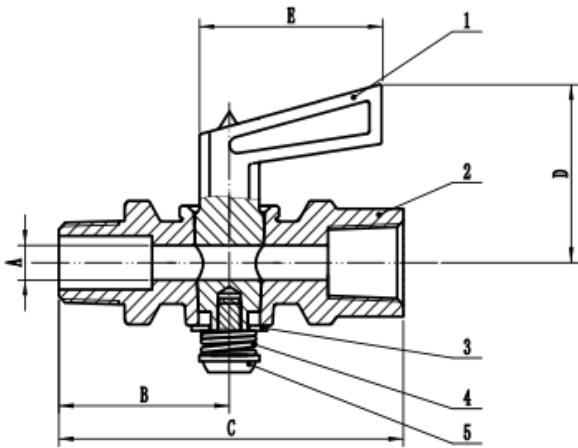



1/4 MIP X FIP S/O COCK



Working pressure: 30PSI
Temperature Range: -40°F to 248°F
Forged brass body
Brass handle
Male x Female Connection

Part No.	Size	A (In)	B (In)	C (In)	D(In)	E(In)	Carton Qty	Wt. (Lbs.)
46161	1/4"	0.22	1.12	2.27	1.14	1.2	250	0.19

Part No.	Description	Material
1	Stem	Brass
2	Body	Brass
3	Washer	Steel
4	Spring	65Mn
5	Tapping screw	Carbon Steel

"This drawing contains proprietary and confidential information of Midland Metal Mfg., Co. and shall not be reproduced, copied, loaned, or submitted to outside parties for examination without our consent"				Date:			UNIT:	INCH	Material:		
				Drawn:			Scale:		1=1	Part Title:	
				Checked:			PROJECT		PART NO.	46161	
				Approved:					DWG. NO.		
4				TOLERANCES ARE: DECIMALS. .X:±0.03 .XX:±0.01 .XXX:±0.005 ANGLES:±1° FRACTIONS ± 1/8		MIDLAND METAL MFG. CO. KANSAS CITY,MO					
3											
2											
1											
NO.	PCA	Date	Revision								