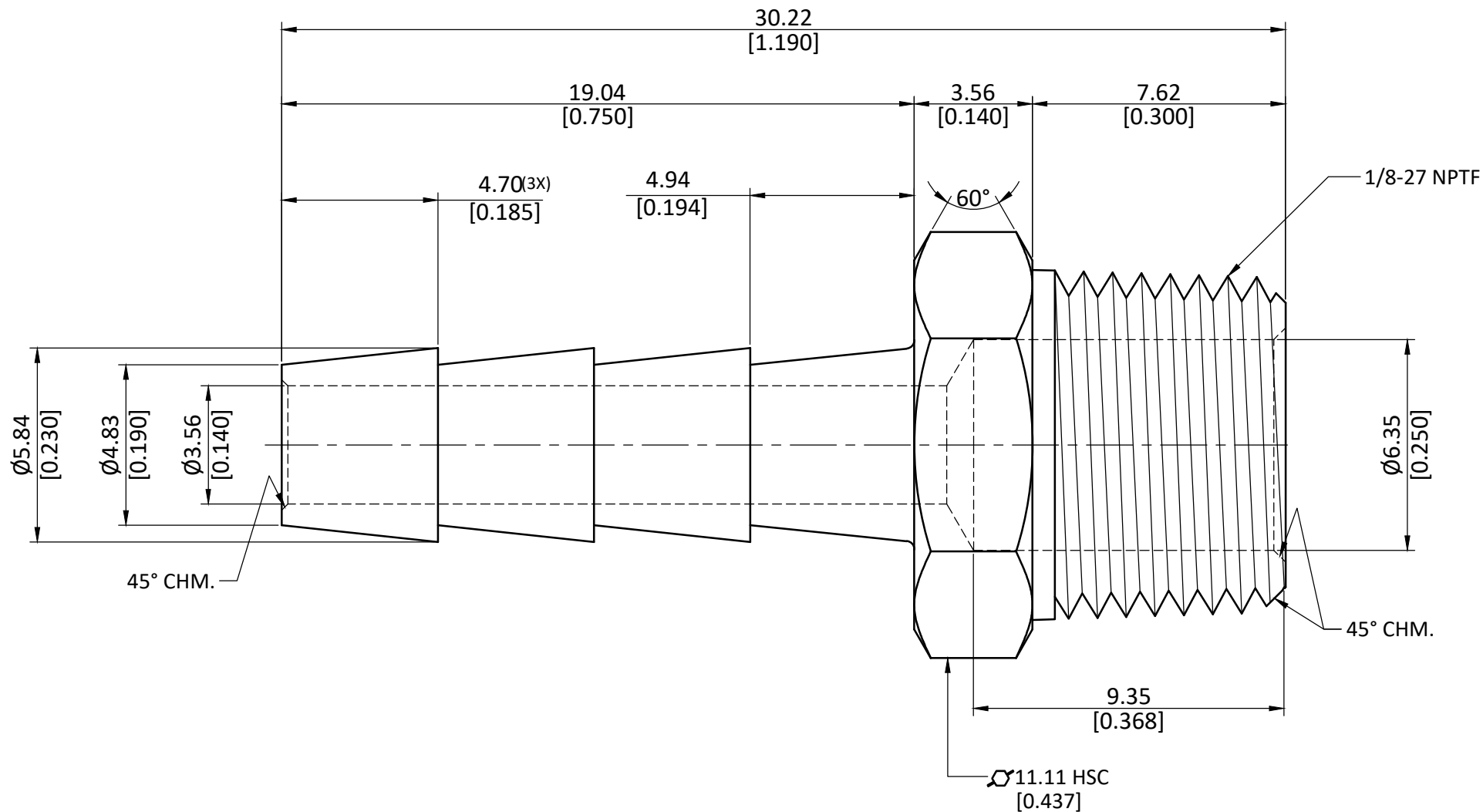


NOTE : This drawing contains proprietary and confidential information of Midland Industries...and shall not be copied, loaned or submitted to outside parties for examination without our prior consent.



ALL DIMENSION ARE IN MM & INCH.

ROD SIZE: 11.11 Hex SC

PROCESS: NOT APPLICABLE.

ASSEMBLY: NOT APPLICABLE.

DRAWN

A.B.

11/01/2023

CHECKED

J.P.

11/01/2023

APPROVED

S.P.

11/01/2023

PART CODE:

32002

ITEM DESCRIPTION:

3/16 X 1/8 HOSE BARB X MALE ADPT

GRADE:

C3604

GENERAL TOLERANCE

MM ±0.25  
INCH ±0.010  
ANGLE ±1°

WEIGHT (gm):

6.97

SCALE:  
N.T.S.

REVISION:  
01