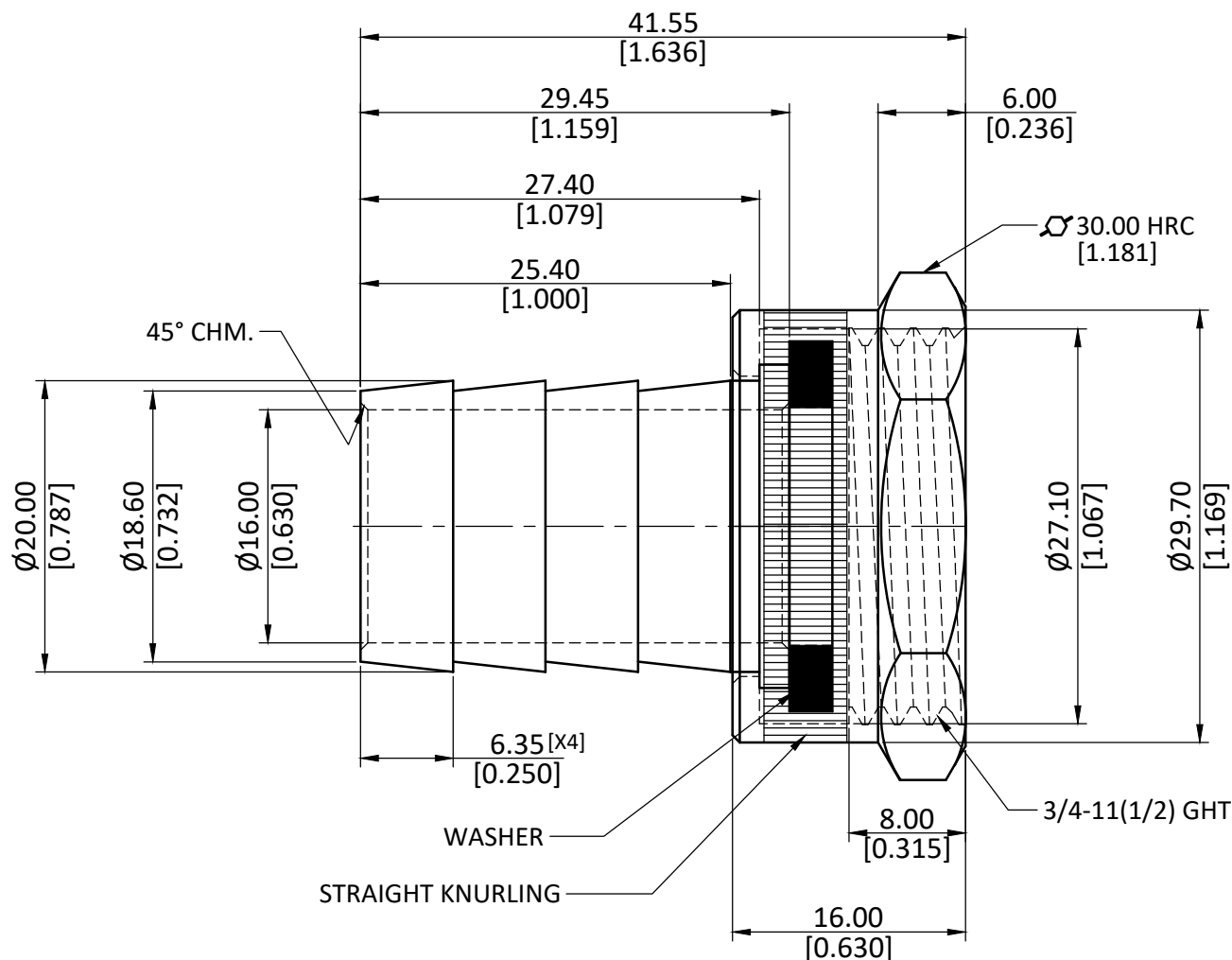


NOTE : This drawing contains proprietary and confidential information of Midland Industries...and shall not be copied, loaned or submitted to outside parties for examination without our prior consent.



ALL DIMENSION ARE IN MM & INCH.

ROD SIZE: 22.20 X 13.00 Round Hollow

PROCESS: ASSEMBLY

ASSEMBLY: ASSEMBLE WITH NUT & WASHER [ASSEMBLY WEIGHT(gm) : 51.93]

DRAWN

A.B.

11/01/2023

GRADE:

GENERAL TOLERANCE

CHECKED

J.P.

11/01/2023

C3604

MM ±0.25

APPROVED

S.P.

11/01/2023

INCH ±0.010

ANGLE ±1°

PART CODE:

30455

ITEM DESCRIPTION:

SHORT 3/4 HB X 3/4 FGH SWIVLE HEX NUT ADP

WEIGHT (gm):

25.42

SCALE:
N.T.S.

REVISION:
01