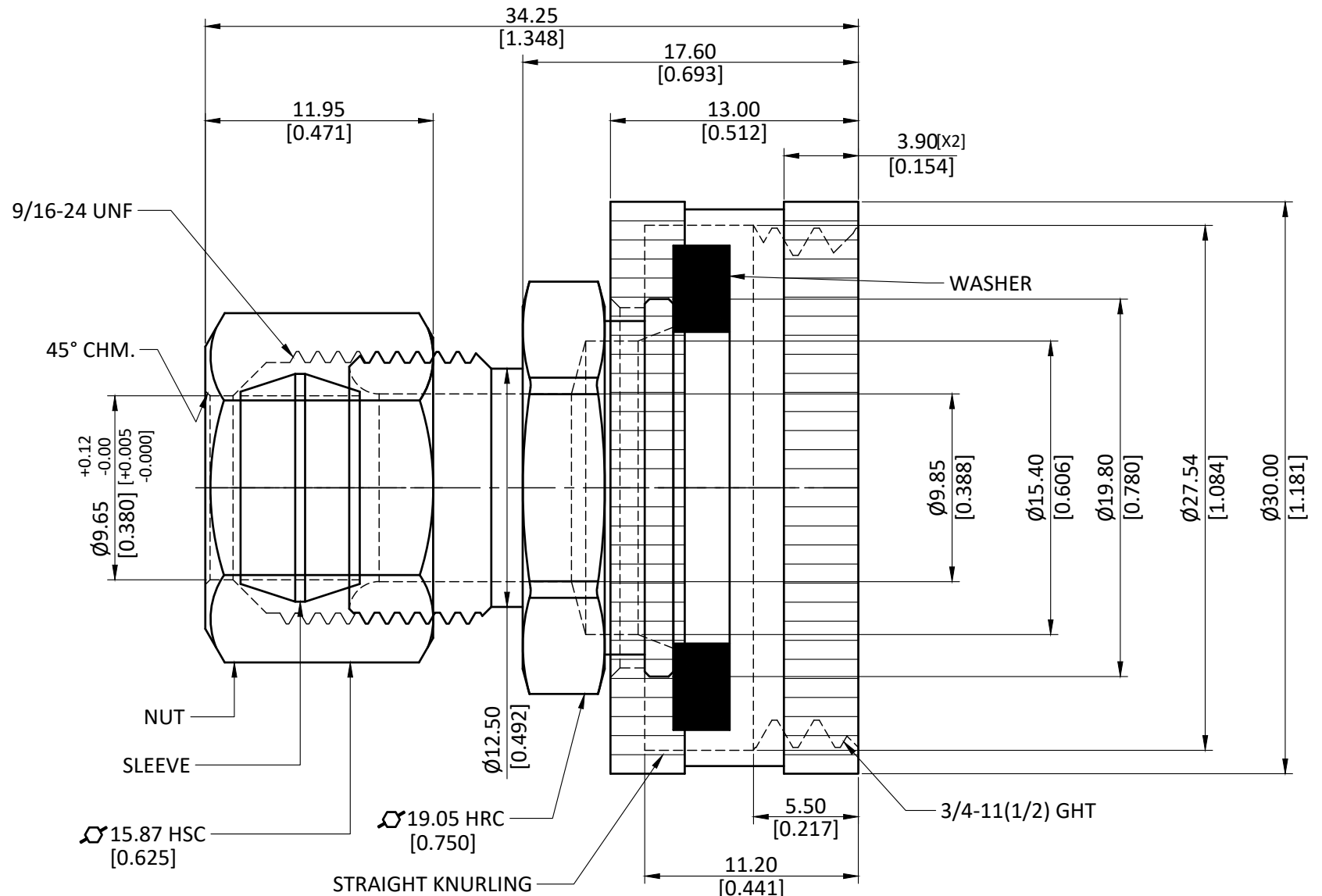


NOTE : This drawing contains proprietary and confidential information of Midland Industries...and shall not be copied, loaned or submitted to outside parties for examination without our prior consent.



ALL DIMENSION ARE IN MM & INCH.	DRAWN	A.B.	11/01/2023	GRADE: C3604	GENERAL TOLERANCE MM ±0.25 INCH ±0.010 ANGLE ±1°	
	CHECKED	J.P.	11/01/2023			
	APPROVED	S.P.	11/01/2023			
ROD SIZE: 19.05 Hex RC	PART CODE: 30051		ITEM DESCRIPTION: 3/8 X 3/4 COMP X FGH SWIVEL ADPT		WEIGHT (gm): 14.46	
PROCESS:M/C ASSEMBLY						
ASSEMBLY: ASSEMBLE WITH 18005 & 18037L & WASHER & NUT [ASSEMBLY WEIGHT(gm) : 42.63]					SCALE: N.T.S.	REVISION: 01