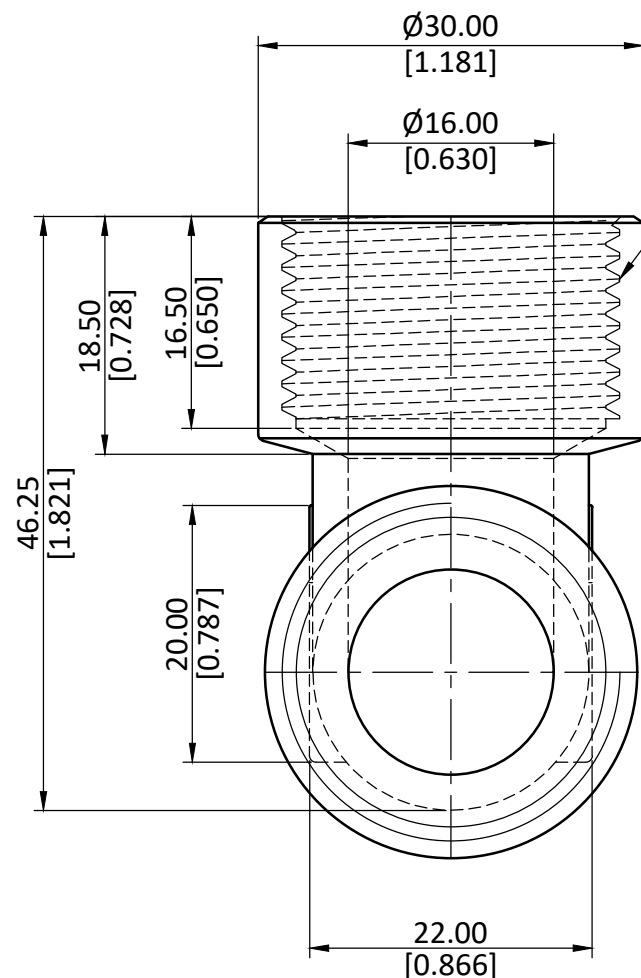
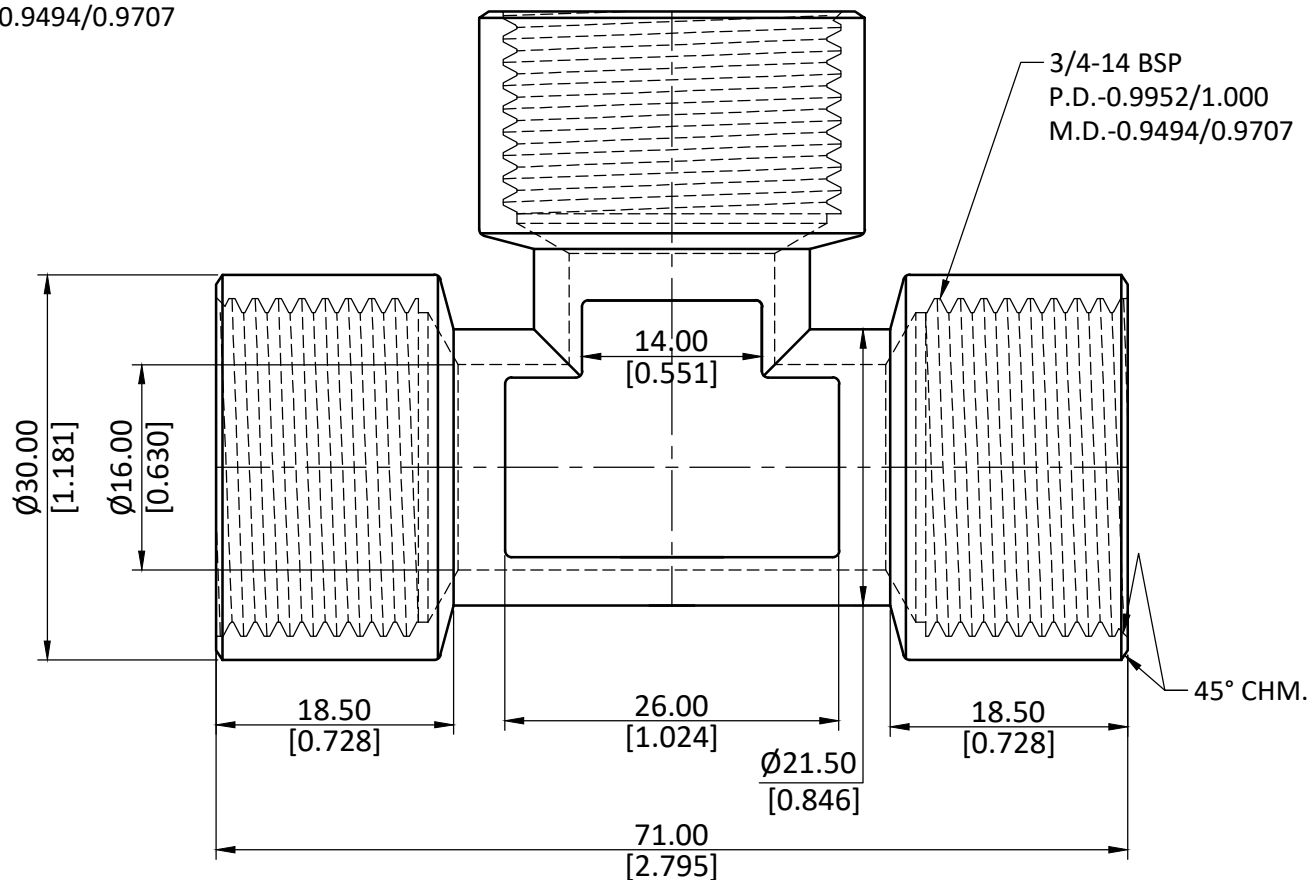


NOTE : This drawing contains proprietary and confidential information of Midland Industries...and shall not be copied, loaned or submitted to outside parties for examination without our prior consent.



3/4-14 BSP
P.D.-0.9952/1.000
M.D.-0.9494/0.9707



3/4-14 BSP
P.D.-0.9952/1.000
M.D.-0.9494/0.9707

45° CHM.



ALL DIMENSION ARE IN MM & INCH.

ROD SIZE: NOT APPLICABLE.

PROCESS: NICKEL PLATING

ASSEMBLY: NOT APPLICABLE.

DRAWN

A.B.

11/01/2023

GRADE:

GENERAL TOLERANCE

CHECKED

J.P.

11/01/2023

C37700

MM ±0.25

APPROVED

S.P.

11/01/2023

INCH ±0.010

PART CODE:

ITEM DESCRIPTION:

WEIGHT (gm):

28934

12-12-12 BRASS FEMALE BSP TEE

158.22

SCALE:

REVISION:

N.T.S.

01