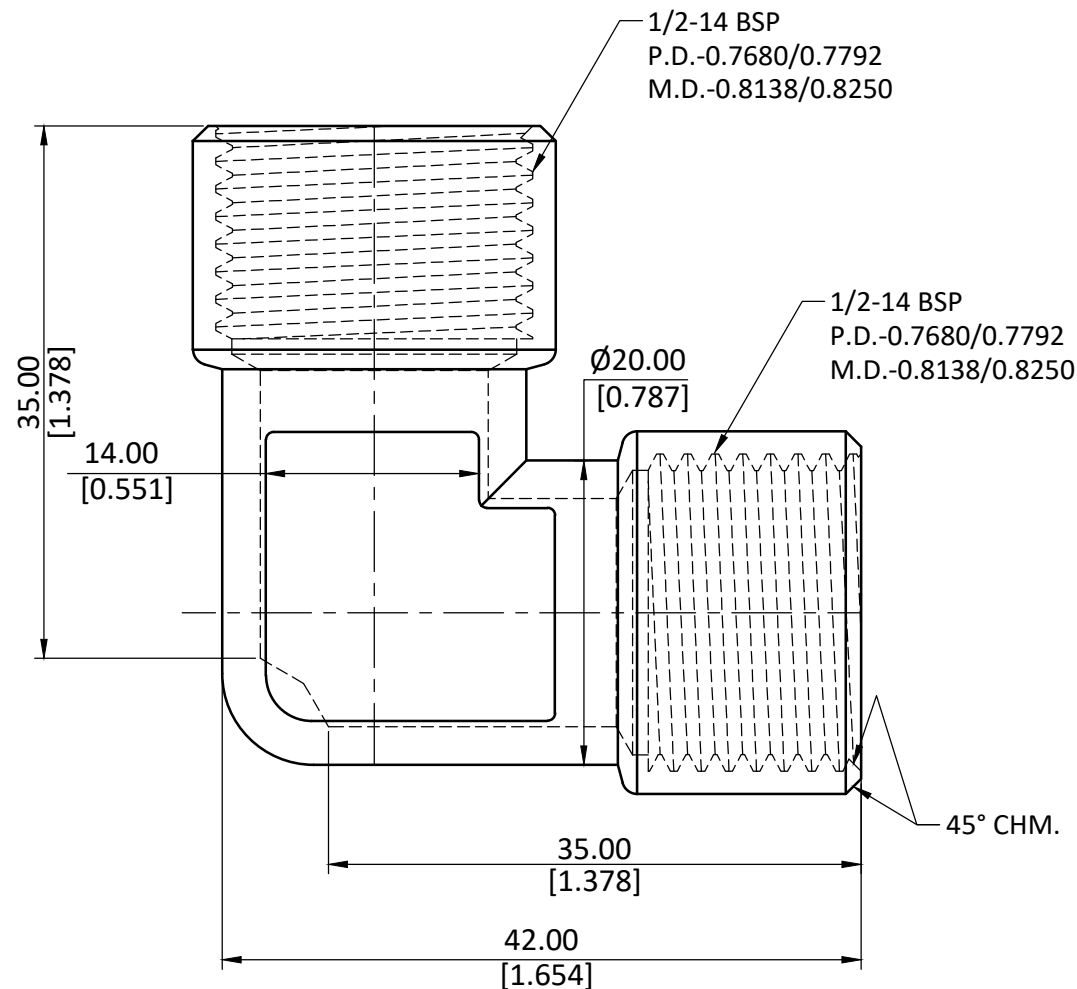
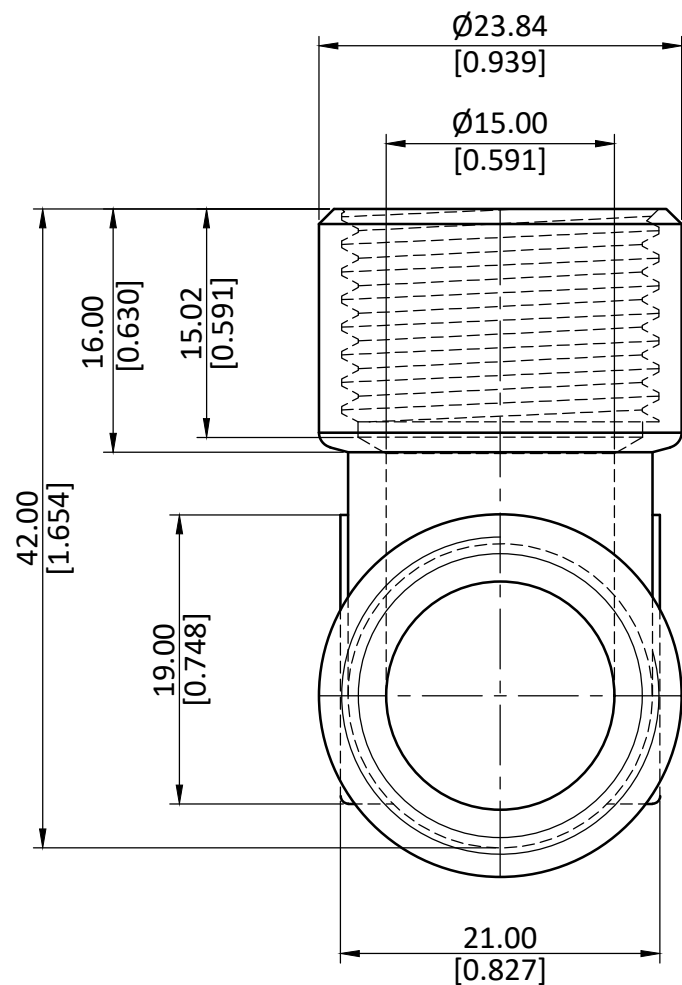


NOTE : This drawing contains proprietary and confidential information of Midland Industries...and shall not be copied, loaned or submitted to outside parties for examination without our prior consent.



ALL DIMENSION ARE IN MM & INCH.

ROD SIZE: NOT APPLICABLE.

PROCESS: NICKEL PLATING

ASSEMBLY: NOT APPLICABLE.

DRAWN

A.B.

11/01/2023

GRADE:

GENERAL TOLERANCE

CHECKED

J.P.

11/01/2023

C37700

MM ±0.25

APPROVED

S.P.

11/01/2023

INCH ±0.010

ANGLE ±1°

PART CODE:

ITEM DESCRIPTION:

WEIGHT (gm):

28920

1/2 X 1/2 FEMALE BSPP N-PLTD ELB

83.44

SCALE:
N.T.S.

REVISION:
01