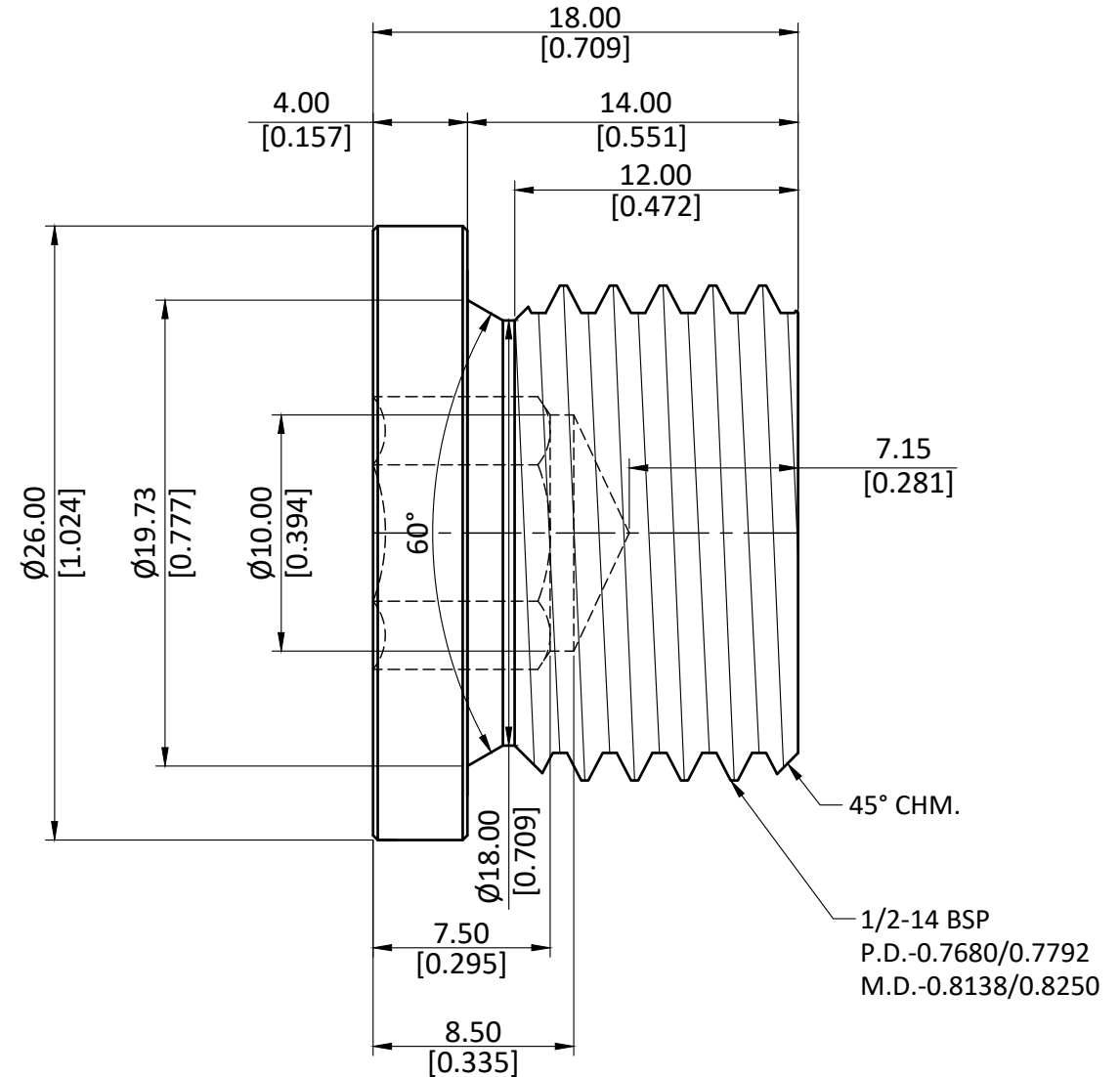
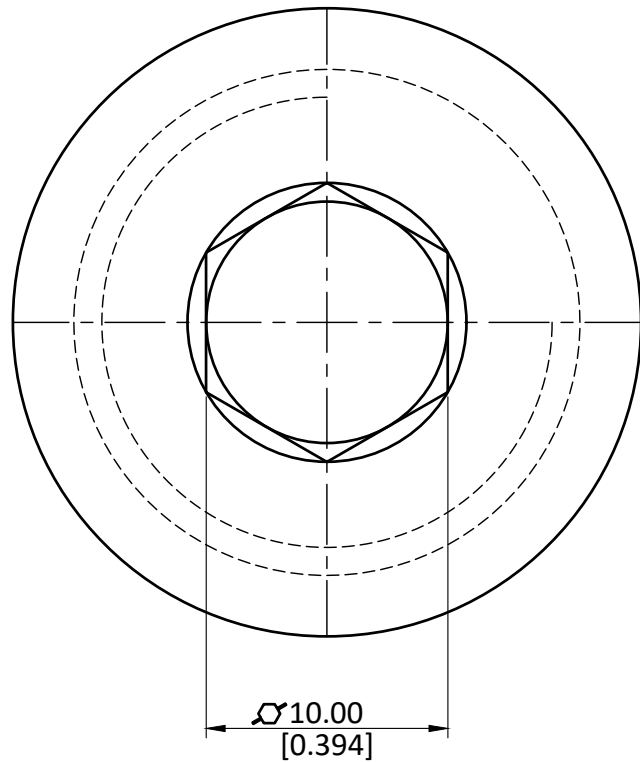


NOTE : This drawing contains proprietary and confidential information of Midland Industries...and shall not be copied, loaned or submitted to outside parties for examination without our prior consent.



ALL DIMENSION ARE IN MM & INCH.

ROD SIZE: 26.00 Round

PROCESS: NICKEL PLATING

ASSEMBLY: NOT APPLICABLE.

DRAWN

A.M.

11/01/2023

CHECKED

J.P.

11/01/2023

APPROVED

S.P.

11/01/2023

PART CODE:

28838

ITEM DESCRIPTION:

1/2 BSPP N-PLTD C/S SEALED PLUG

GRADE:

C3604

GENERAL TOLERANCE

MM  $\pm 0.25$   
INCH  $\pm 0.010$   
ANGLE  $\pm 1^\circ$

WEIGHT (gm):

47.55

SCALE:  
N.T.S.

REVISION:  
01