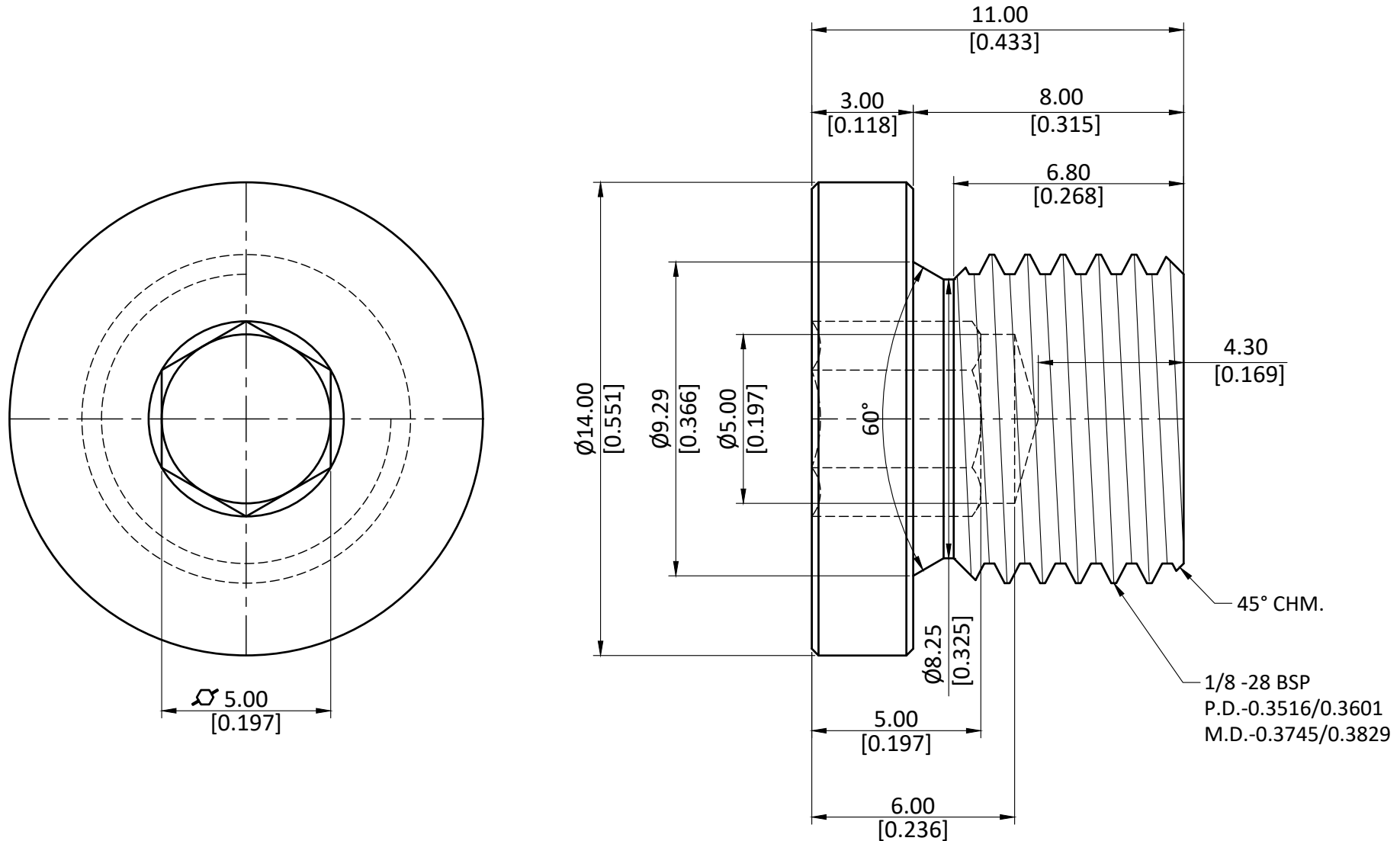


NOTE : This drawing contains proprietary and confidential information of Midland Industries...and shall not be copied, loaned or submitted to outside parties for examination without our prior consent.



ALL DIMENSION ARE IN MM & INCH.	DRAWN	A.M.	11/01/2023	GRADE: C3604	GENERAL TOLERANCE MM ±0.25 INCH ±0.010 ANGLE ±1°	
	CHECKED	J.P.	11/01/2023			
	APPROVED	S.P.	11/01/2023			
ROD SIZE: 14.00 Round	PART CODE: 28835		ITEM DESCRIPTION: 1/8 BSPP N-PLTD C/S SEALED PLUG		WEIGHT (gm): 7.23	
PROCESS: NICKEL PLATING						
ASSEMBLY: NOT APPLICABLE.					SCALE: N.T.S.	REVISION: 01