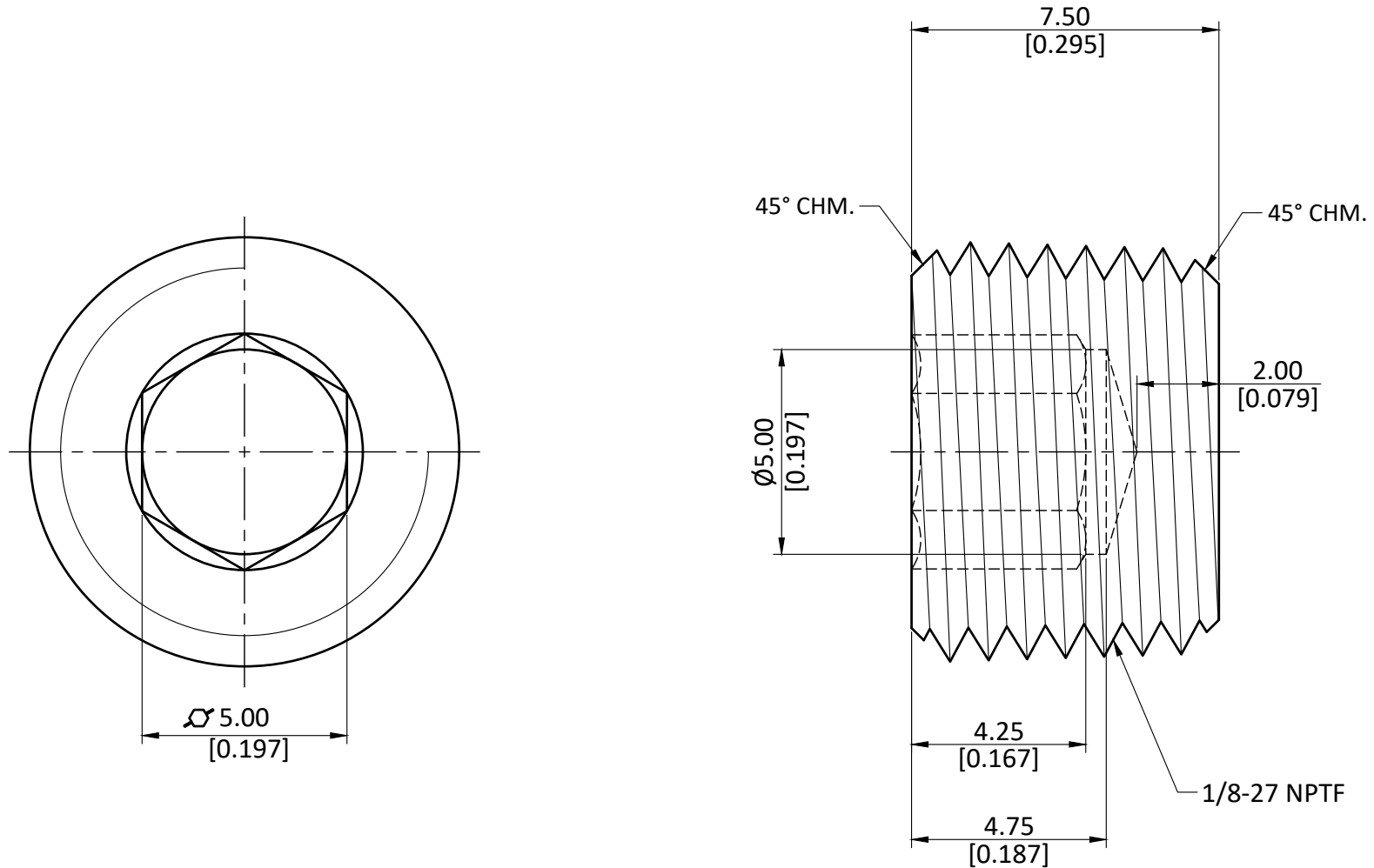


NOTE : This drawing contains proprietary and confidential information of Midland Industries...and shall not be copied, loaned or submitted to outside parties for examination without our prior consent.



ALL DIMENSION ARE IN MM & INCH.

ROD SIZE: 10.30 Round

PROCESS: NOT APPLICABLE.

ASSEMBLY: NOT APPLICABLE.

DRAWN

A.M.

11/01/2023

CHECKED

J.P.

11/01/2023

APPROVED

S.P.

11/01/2023

PART CODE:

28093

ITEM DESCRIPTION:

1/8 BRASS C/S HEX PLUG

GRADE:

C3604

GENERAL TOLERANCE

MM ±0.25

INCH ±0.010

ANGLE ±1°

WEIGHT (gm):

3.27

SCALE:
N.T.S.

REVISION:
01