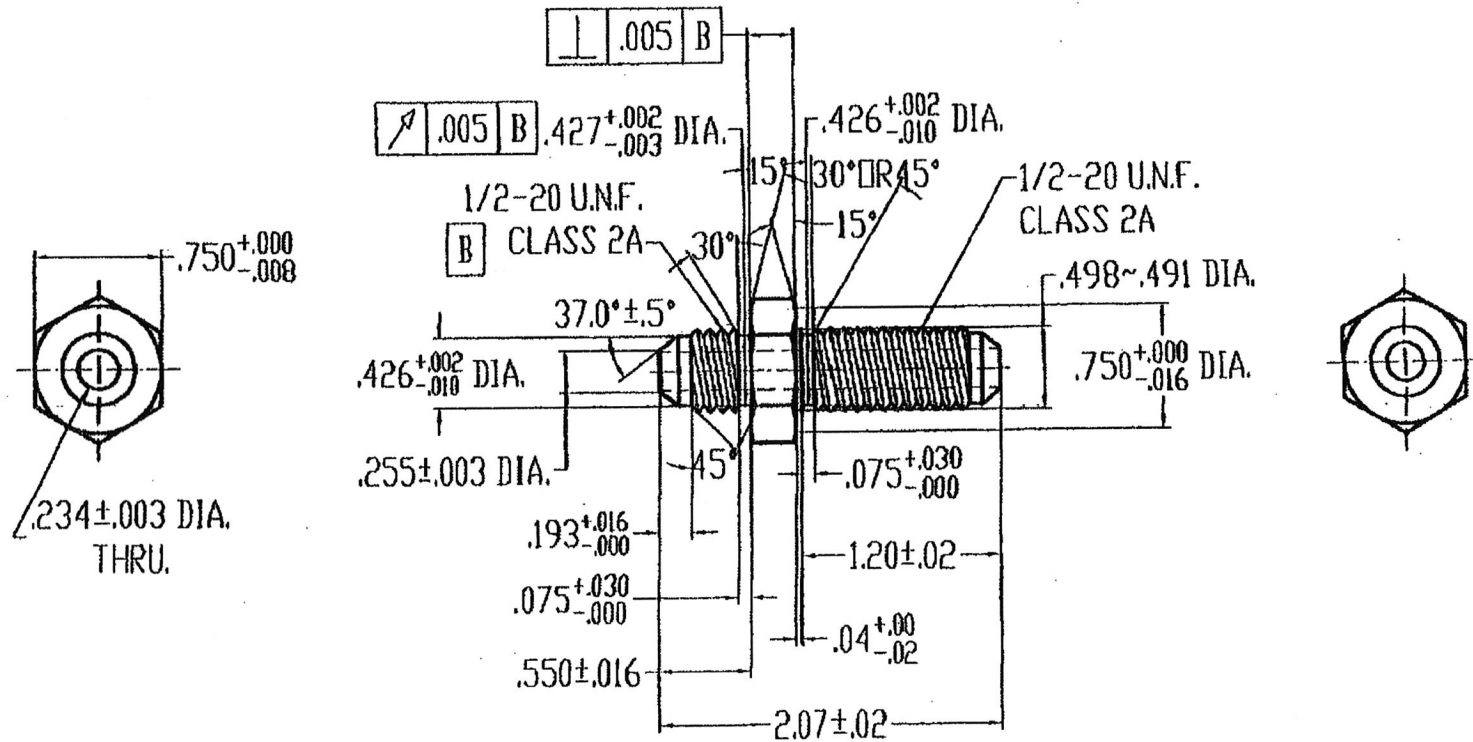



5MJ-5MJ BLKHD  
Carbon Steel

RoHS Compliant  
Zinc Di- Chromate Plating with clear  
conversion



"This drawing contains proprietary and confidential information of Midland Metal Mfg., Co. and shall not be reproduced, copied, loaned, or submitted to outside parties for examination without our consent"				Date:			UNIT:	INCH	Material:	
				Drawn:			Scale:	1=1	Part Title:	
				Checked:			PROJECT		PART NO.	270055
				Approved:					DWG. NO.	
4				TOLERANCES ARE: DECIMALS. .X:±0.03 .XX:±0.01 .XXX:±0.005  ANGLES:±1° FRACTIONS ± 1/8					MIDLAND METAL MFG. CO. KANSAS CITY,MO	
3										
2										
1										
NO.	PCA	Date	Revision							