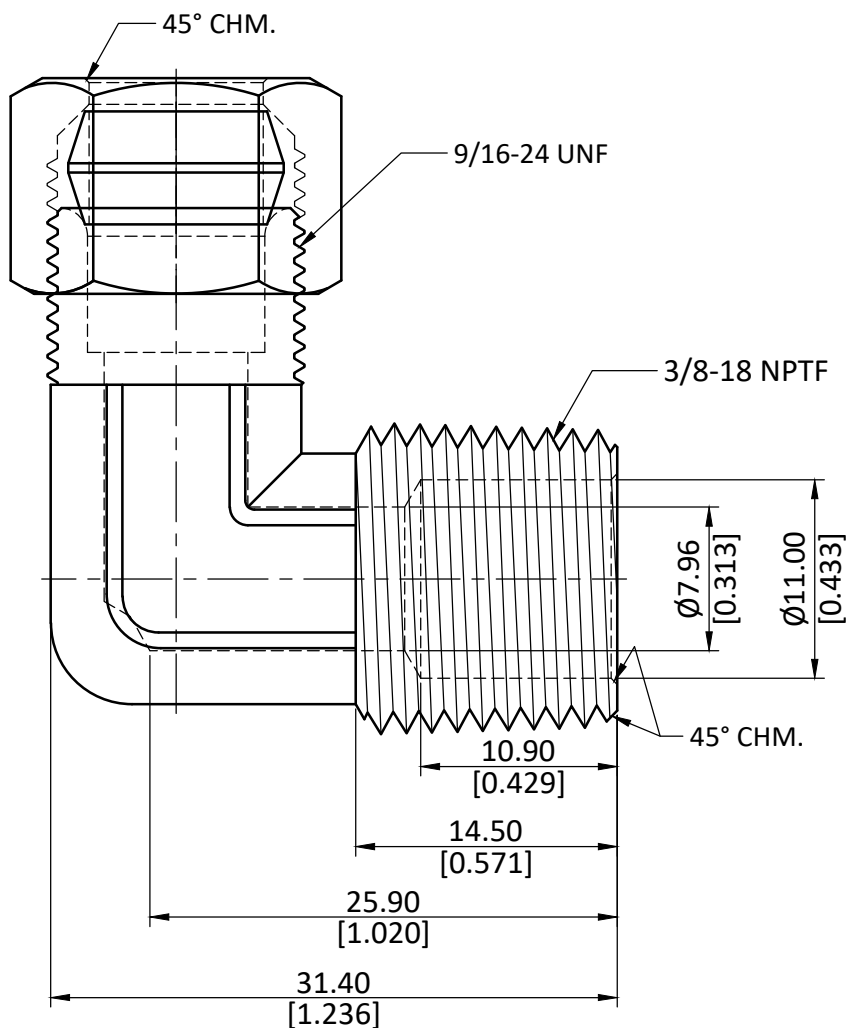
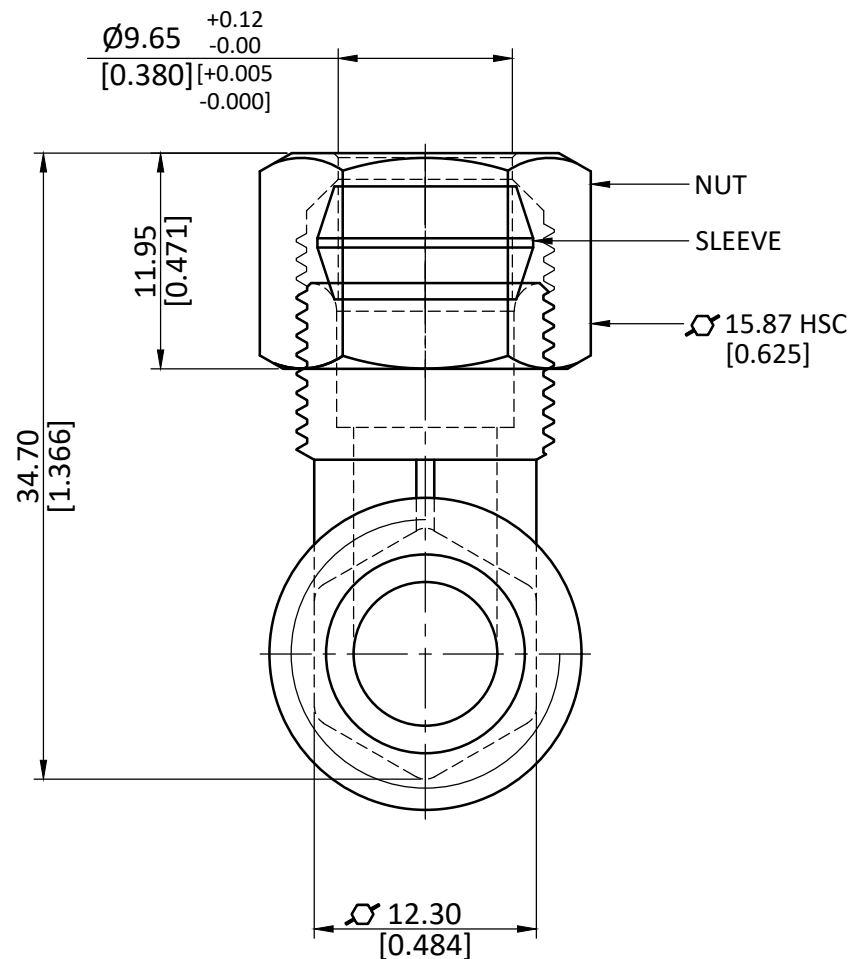


NOTE : This drawing contains proprietary and confidential information of Midland Industries...and shall not be copied, loaned or submitted to outside parties for examination without our prior consent.



ALL DIMENSION ARE IN MM & INCH.

ROD SIZE: NOT APPLICABLE.

PROCESS: ASSEMBLY

ASSEMBLY: ASSEMBLE WITH 18005LF & 18037L [ASSEMBLY WEIGHT(gm) : 42.25]

DRAWN

A.B.

11/01/2023

GRADE:

GENERAL TOLERANCE

CHECKED

J.P.

11/01/2023

LF-CW510L

MM ± 0.25

INCH ± 0.010

ANGLE $\pm 1^\circ$

APPROVED

S.P.

11/01/2023

WEIGHT (gm):

33.00

PART CODE:

18234LF

ITEM DESCRIPTION:

3/8 X 3/8 COMP X MIP ELBOW AB1953

SCALE:

N.T.S.

REVISION:

01