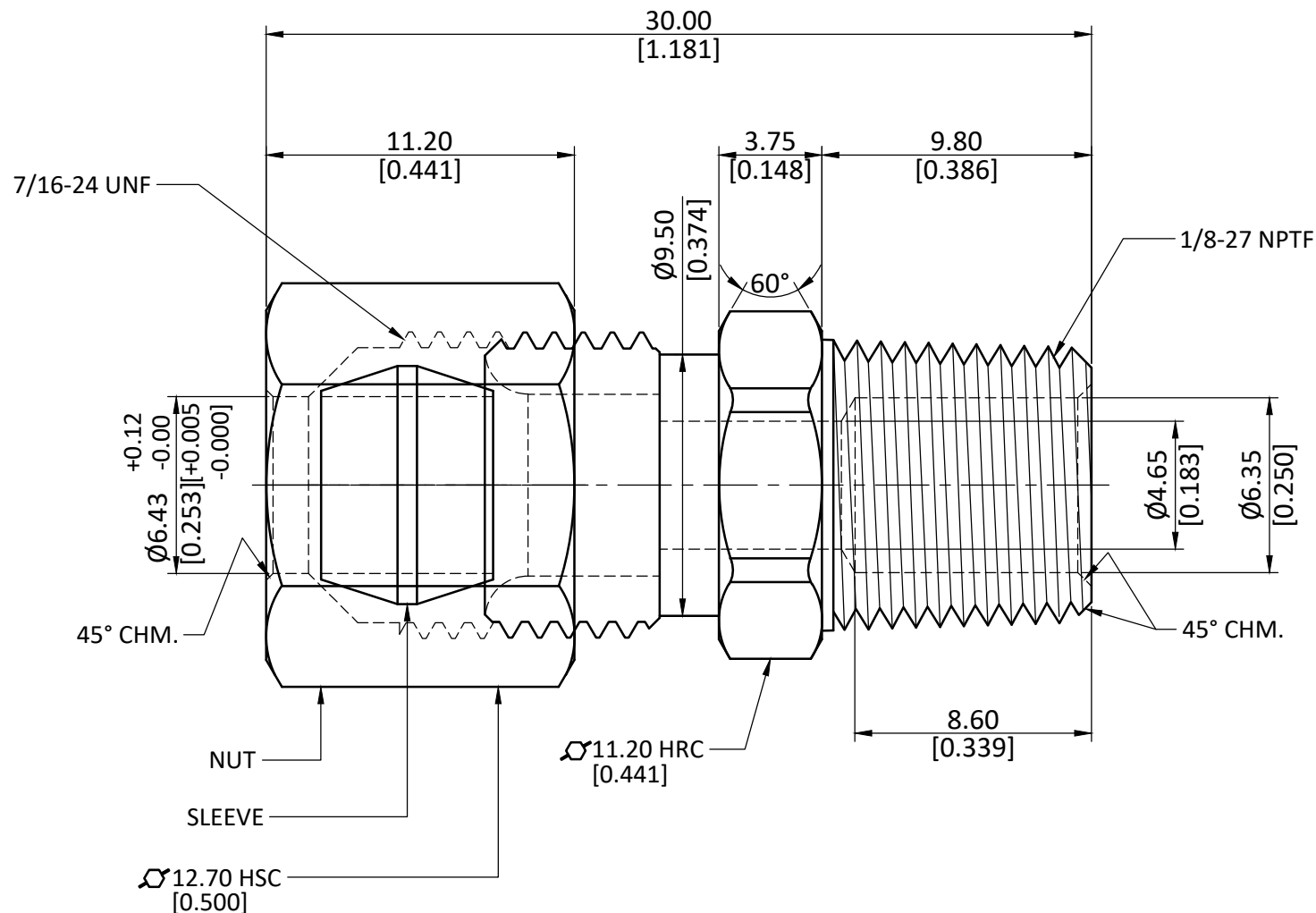


NOTE : This drawing contains proprietary and confidential information of Midland Industries...and shall not be copied, loaned or submitted to outside parties for examination without our prior consent.



ALL DIMENSION ARE IN MM & INCH.

ROD SIZE: 11.20 Hex RC

PROCESS: ASSEMBLY

ASSEMBLY: ASSEMBLE WITH 18003 & 18035L [ ASSEMBLY WEIGHT(gm) : 16.80 ]

DRAWN

A.B.

11/01/2023

GRADE:

GENERAL TOLERANCE

CHECKED

J.P.

11/01/2023

C3604

MM ±0.25

INCH ±0.010

ANGLE ±1°

APPROVED

S.P.

11/01/2023

WEIGHT (gm):

9.80

PART CODE:

18179

ITEM DESCRIPTION:

1/4 X 1/8 COMP X MIP ADAPTER

SCALE:  
N.T.S.

REVISION:  
01