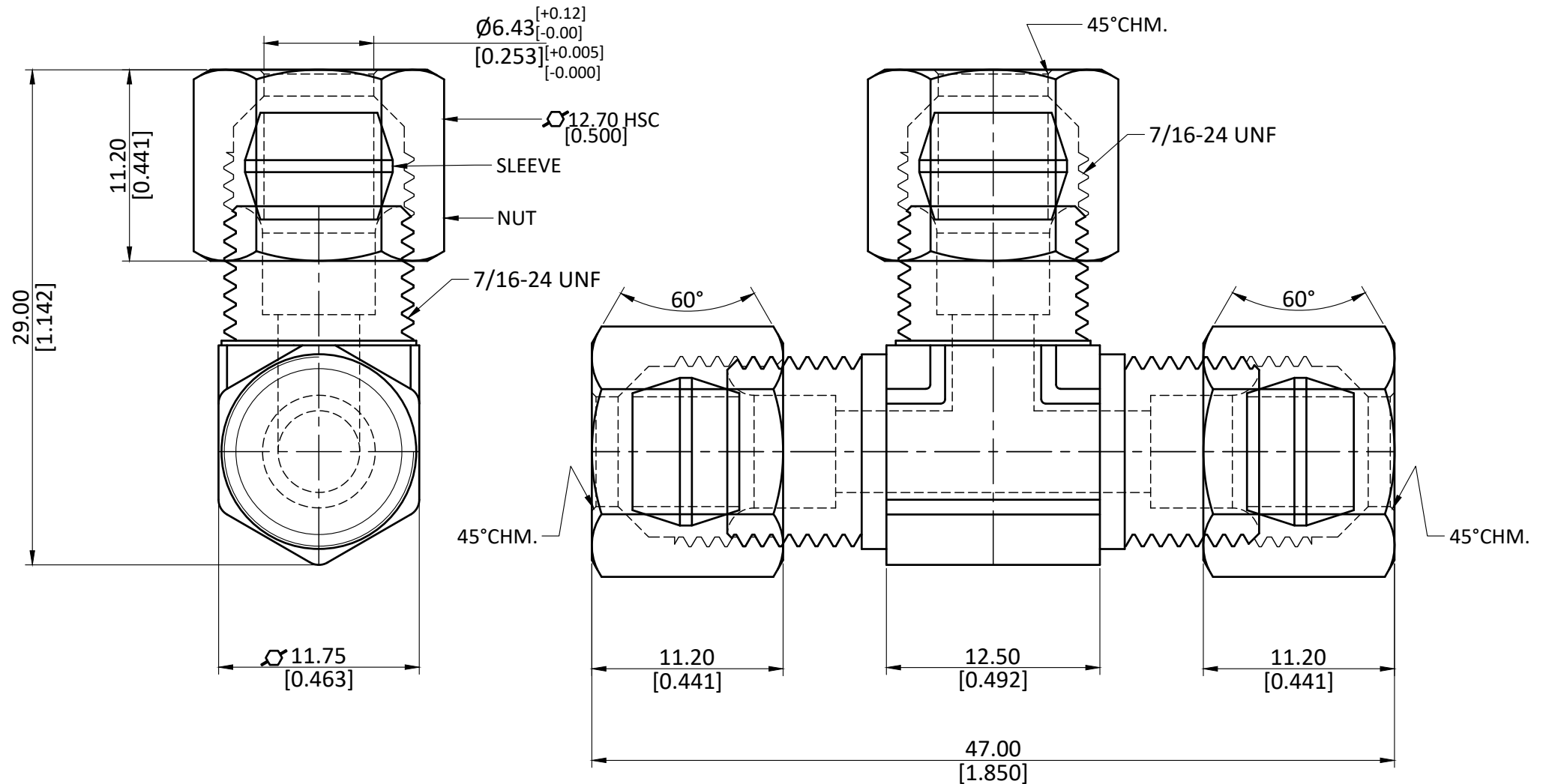


NOTE : This drawing contains proprietary and confidential information of Midland Industries...and shall not be copied, loaned or submitted to outside parties for examination without our prior consent.



ALL DIMENSION ARE IN MM & INCH.

ROD SIZE: NOT APPLICABLE.

PROCESS: ASSEMBLY

ASSEMBLY: ASSEMBLE WITH 18003 & 18035L [ASSEMBLY WEIGHT(gm) : 45.70]

DRAWN

CHECKED

APPROVED

PART CODE:

18103

A.M.

J.P.

S.P.

11/01/2023

11/01/2023

11/01/2023

ITEM DESCRIPTION:

1/4 COMPRESSION TEE

GRADE:

C37700

GENERAL TOLERANCE

MM ±0.25

INCH ±0.010

ANGLE ±1°

WEIGHT (gm):

23.30

SCALE:
N.T.S.

REVISION:
01