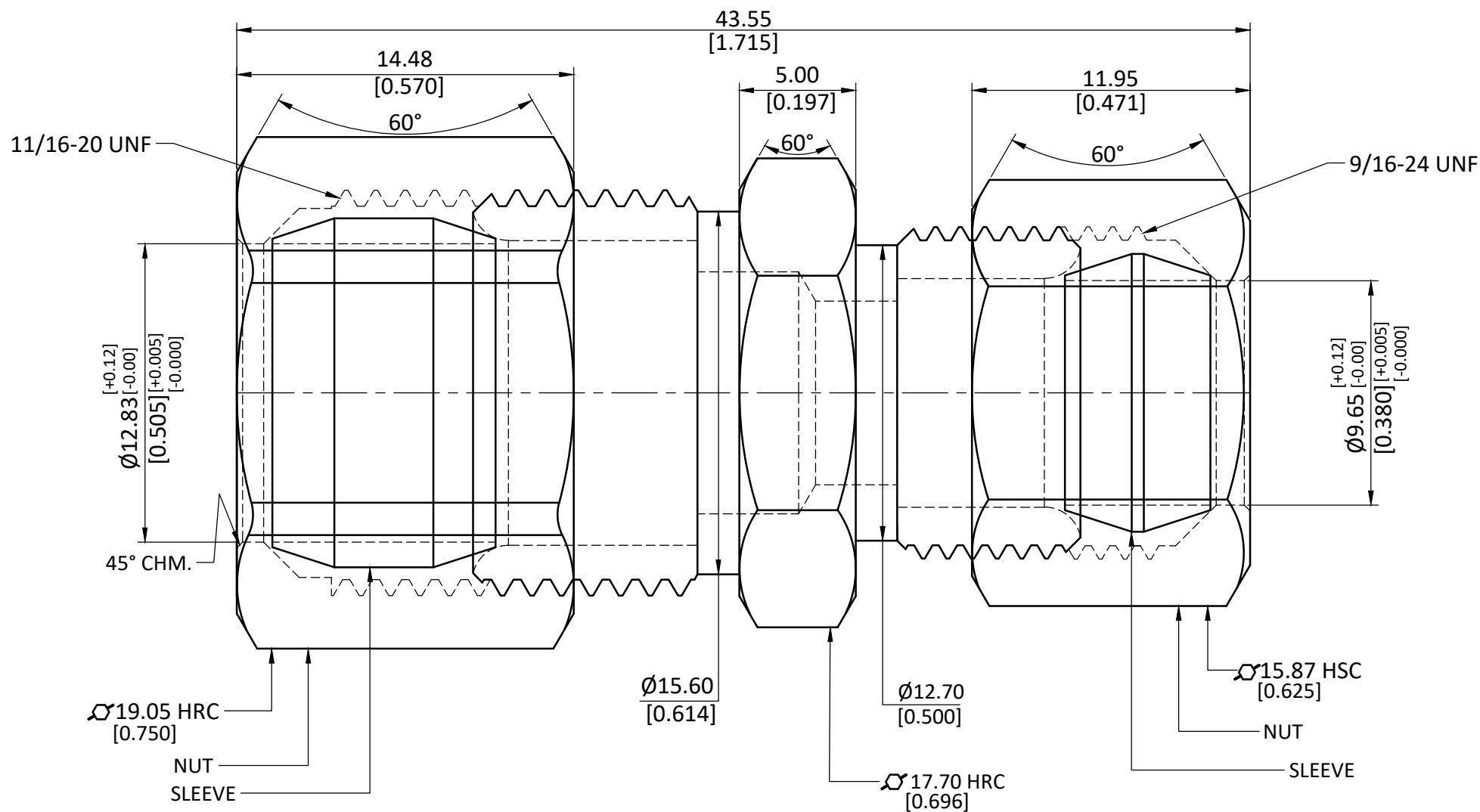


NOTE : This drawing contains proprietary and confidential information of Midland Industries...and shall not be copied, loaned or submitted to outside parties for examination without our prior consent.



ALL DIMENSION ARE IN MM & INCH.

ROD SIZE: 17.70 Hex RC

PROCESS: ASSEMBLY

ASSEMBLY: ASSEMBLE WITH 18007 & 18039L & 18005 & 18037L [ASSEMBLY WEIGHT(gm) : 45.60]

DRAWN

A.M.

11/01/2023

GRADE:

GENERAL TOLERANCE

CHECKED

J.P.

11/01/2023

C3604

MM ±0.25

APPROVED

S.P.

11/01/2023

INCH ±0.010

ANGLE ±1°

PART CODE:

18081

ITEM DESCRIPTION:

1/2 X 3/8 REDUCING COMP UNION

WEIGHT (gm):

20.60

SCALE:
N.T.S.

REVISION:
01