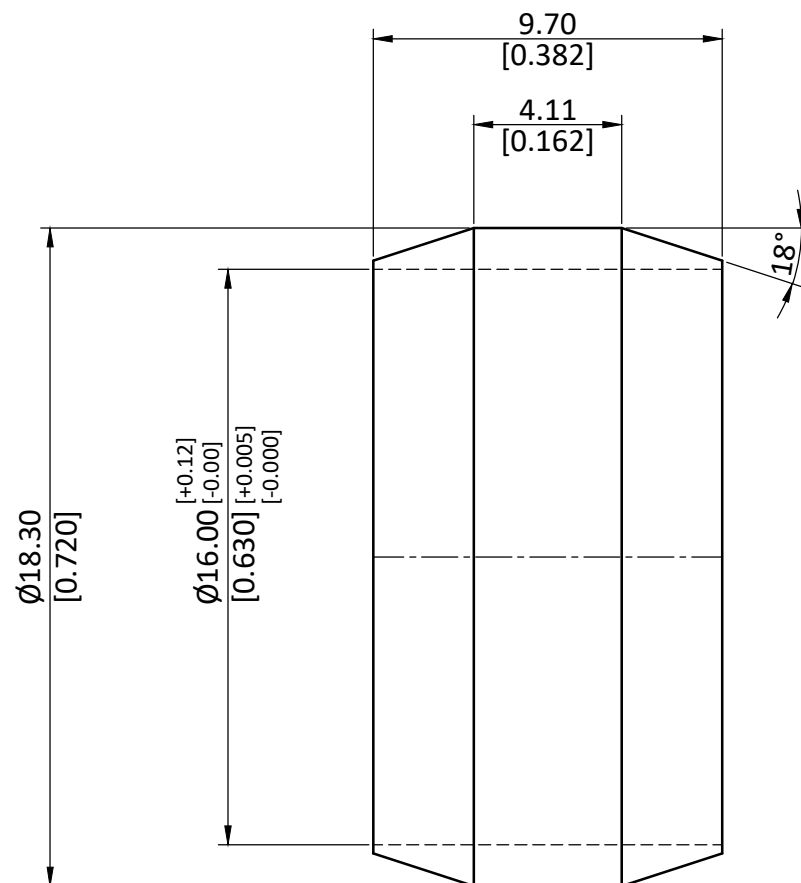


NOTE : This drawing contains proprietary and confidential information of Midland Industries...and shall not be copied, loaned or submitted to outside parties for examination without our prior consent.



ALL DIMENSION ARE IN MM & INCH.

ROD SIZE: 18.30 x 16.00 Round Pipe

PROCESS: NOT APPLICABLE.

ASSEMBLY: NOT APPLICABLE.

DRAWN

A.M.

11/01/2023

CHECKED

J.P.

11/01/2023

APPROVED

S.P.

11/01/2023

PART CODE:

18008

ITEM DESCRIPTION:

5/8 COMPRESSION SLEEVE

GRADE:

LF-CuZn37

GENERAL TOLERANCE

MM ±0.15

INCH ±0.006

ANGLE ±1°

WEIGHT (gm):

3.57

SCALE:
N.T.S.

REVISION:
01