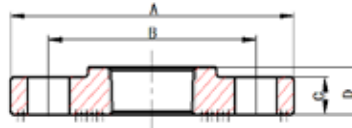


BLACK AND GALVANIZED COMPANION FLANGES

VALVES

VALVES

DUCTILE IRON THREADED COMPANION FLANGES



*DIMENSIONS, FACED AND DRILLED IN ACCORDANCE WITH ASME B16.42/AWWA C110

*COATING: AVAILABLE IN BLACK ELECTROPHORETIC COATING AND HOT DIP GALVANIZED

*HOT-DIPPED GALVANIZED CONFORM TO ASTM A153; COMPANION FLANGE THREADS CONFORM TO ASME B1.20.1

*APPLICATION: WATERWORKS, PUMP, IRRIGATION

BLACK

PART # (BLACK)	DESCRIPTION (THREADED)	SIZE (INCH)	A (INCH)	B (INCH)	C (INCH)	D (INCH)	BOLT HOLE SIZE	NO. OF HOLES	UNIT WEIGHT (KG)	LIST
108062	1 150	1"	4.25	3.12	0.44	0.75	φ0.625	4	0.8347	
108063	1 1/4 150	1-1/4"	4.62	3.5	0.5	0.81	φ0.625	4	1.0797	
108064	1 1/2 150	1-1/2"	5	3.88	0.56	0.88	φ0.625	4	1.3217	
108065	2 150	2"	6	4.75	0.62	1	φ0.75	4	2.1457	
108066	2 1/2 150	2-1/2"	7	5.5	0.69	1.12	φ0.75	4	3.4182	
108067	3 150	3"	7.5	6	0.75	1.19	φ0.75	4	3.9051	
108069	4 150	4"	9	7.5	0.94	1.31	φ0.75	8	5.5254	
108071	6 150	6"	11	9.5	1	1.56	φ0.875	8	7.5328	
108072	8 150	8"	13.5	11.75	1.12	1.75	φ0.875	8	13.0201	
108073	10 150	10"	16	14.25	1.19	1.94	φ1	12	22.854	
108074	12 150	12"	19	17	1.25	2.19	φ1	12	26.5451	

GALVANIZED

108025	2 150	2"	6	4.75	0.62	1	φ0.75	4	2.1457	
108026	2 1/2 150	2-1/2"	7	5.5	0.69	1.12	φ0.75	4	3.4182	
108027	3 150	3"	7.5	6	0.75	1.19	φ0.75	4	3.9051	
108028	4 150	4"	9	7.5	0.94	1.31	φ0.75	8	5.5254	
108029	6 150	6"	11	9.5	1	1.56	φ0.875	8	7.5328	



USE OUR TEXT LINE [855-609-3729](tel:855-609-3729) TO COMMUNICATE WITH MIDLAND MORE CONVENIENTLY

BLACK AND GALVANIZED COMPANION FLANGES

VALVES

THREADED COMPANION FLANGE CLASS 150 (BLACK & GALVANIZED)



*DIMENSIONS, FACED AND DRILLED IN ACCORDANCE WITH ASME B16.42/AWWA C110

*COATING: AVAILABLE IN BLACK ELECTROPHORETIC COATING AND HOT DIP GALVANIZED

*HOT-DIPPED GALVANIZED CONFORM TO ASTM A153; COMPANION FLANGE THREADS CONFORM TO ASME B1.20.1

*APPLICATION: WATERWORKS, PUMP, IRRIGATION

BLACK

PART #	DESCRIPTION (DI FLANGE)	SIZE (INCH)	A (INCH)	B (INCH)	C (INCH)	D (INCH)	BOLT HOLE SIZE	NO. OF HOLES	UNIT WEIGHT (KG)	LIST
108075	2 1/2X7 1/2 150 (Pipe Size 2-1/2 x 3)	2" X7-1/2"	7.50	6.00	0.75	1.19	φ0.75	4	4.3827	
108076	1 1/2X9 150 (Pipe Size 1-1/2 x 4)	2-1/2"X7-1/2"	7.50	6.00	0.75	1.19	φ0.75	4	4.2013	
108077	2 X9 150 (Pipe Size 2 x 4)	1-1/2"X9"	9.00	7.50	0.94	1.31	φ0.75	8	6.8352	
108088	2 1/2X9 150 (Pipe Size 2-1/2 x 4)	2"X9"	9.00	7.50	0.94	1.31	φ0.75	8	6.4168	
108089	3 X9 150 (Pipe Size 3 x 4)	2-1/2"X9"	9.00	7.50	0.94	1.31	φ0.75	8	6.3343	
108090	2X10 150 (Pipe Size 2 x 5)	3"X9"	9.00	7.50	0.94	1.31	φ0.75	8	6.081	
108091	1 1/2 X11 150 (Pipe Size 1 1/2 x 6)	4"X10"	10.00	8.50	0.94	1.44	φ0.875	8	6.8761	
108094	2 1/2X11 150 (Pipe Size 2-1/2 x 6)	2"X11"	11.00	9.50	1.00	1.56	φ0.875	8	10.6349	
108095	4 X11 150 (Pipe Size 4 x 6)	3"X11"	11.00	9.50	1.00	1.56	φ0.875	8	10.1831	
108092	5 X11 150 (Pipe Size 5 x 6)	4"X11"	11.00	9.50	1.00	1.56	φ0.875	8	9.4563	
108096	5 X13 1/2 150 (Pipe Size 5 x 8)	4" X13-1/2"	13.50	11.75	1.12	1.75	φ0.875	8	17.1296	
108097	2 X16 150 R (Pipe Size 2 x 10)	6"X 13-1/2"	13.50	11.75	1.12	1.75	φ0.875	8	15.2184	
108098	6 X16 150 R (Pipe Size 6 x 10)	2"X16"	16.00	14.25	1.19	1.94	φ1	12	26.54	

GALVANIZED

108033	1 1/2X9 150 (Pipe Size 1-1/2 x 4)	2-1/2"X7-1/2"	7.50	6.00	0.75	1.19	φ0.75	4	4.2013	
108035	3 X9 150 (Pipe Size 3 x 4)	2-1/2"X9"	9.00	7.50	0.94	1.31	φ0.75	8	6.3343	
108036	2X10 150 (Pipe Size 2 x 5)	3"X9"	9.00	7.50	0.94	1.31	φ0.75	8	6.081	
108038	2 1/2X11 150 (Pipe Size 2-1/2 x 6)	2"X11"	11.00	9.50	1.00	1.56	φ0.875	8	10.6349	
108039	3 X11 150 (Pipe Size 3 x 6)	2-1/2"X11"	11.00	9.50	1.00	1.56	φ0.875	8	10.5386	
108037	5 X11 150 (Pipe Size 5 x 6)	4"X11"	11.00	9.50	1.00	1.56	φ0.875	8	9.4563	
108040	5 X13 1/2 150 (Pipe Size 5 x 8)	4" X13-1/2"	13.50	11.75	1.12	1.75	φ0.875	8	17.1296	