



**FEATURING NEW & EXPANDED PRODUCT LINES**

# HOSE ACCESSORIES

*Cam & Groove, Crimplok,  
King Nipples, Hose Menders,  
Fire Hose Fittings,  
Hammer Unions, & More*



**CALL US**  
PHONE: 800-821-5725

**VISIT US**  
MIDLANDINDUSTRIES.COM

9311 TROOST AVE.,  
KANSAS CITY, MO 64131

FIND US ON:   



**ALUMINUM  
CAM & GROOVE**



**POLYPROPYLENE  
CAM & GROOVE**



**STAINLESS STEEL  
CAM & GROOVE**



**BRASS  
CAM & GROOVE**



**COMBINATION  
NIPPLES**



**UNIVERSAL/GROUND  
JOINT COUPLINGS**



**FIRE HOSE  
FITTINGS**



**HAMMER  
UNIONS**

⚠ **WARNING:** This product can expose you to chemicals, including nickel, which are known to the State of California to cause cancer. For more information, visit [www.P65Warnings.ca.gov](http://www.P65Warnings.ca.gov)

## TYPE A - MALE ADAPTER X FEMALE NPT



SIZE	PART# ALUMINUM	PART# (PP) POLYPROPYLENE	PART# BRASS	PART# 316 STAINLESS STEEL
1/2"	CGA-050-A1	CGA-050-PP	CGA-050-B1	CGA-050-SS1
3/4"	CGA-075-A1	CGA-075-PP	CGA-075-B1	CGA-075-SS1
1"	CGA-100-A1	CGA-100-PP	CGA-100-B1	CGA-100-SS1
1-1/4"	CGA-125-A1	CGA-125-PP	CGA-125-B1	CGA-125-SS1
1-1/2"	CGA-150-A1	CGA-150-PP	CGA-150-B1	CGA-150-SS1
2"	CGA-200-A1	CGA-200-PP	CGA-200-B1	CGA-200-SS1
2-1/2"	CGA-250-A1			CGA-250-SS1
3"	CGA-300-A1	CGA-300-PP	CGA-300-B1	CGA-300-SS1
4"	CGA-400-A1	CGA-400-PP	CGA-400-B1	CGA-400-SS1
5"	CGA-500-A1			
6"	CGA-600-A1		CGA-600-B1	CGA-600-SS1
8"	CGA-800-A1			

Industry Crossovers: Alum: 6191X PP: 35-91X Brass: 4491X 316SS: 6391X

## TYPE B - FEMALE COUPLER X MALE NPT



SIZE	PART# ALUMINUM	PART# (PP) POLYPROPYLENE	PART# BRASS	PART# 316 STAINLESS STEEL
1/2"	CGB-050-A1	CGB-050-PP		CGB-050-SS1
3/4"	CGB-075-A1	CGB-075-PP		CGB-075-SS1
1"	CGB-100-A1	CGB-100-PP	CGB-100-B1	CGB-100-SS1
1-1/4"	CGB-125-A1	CGB-125-PP	CGB-125-B1	CGB-125-SS1
1-1/2"	CGB-150-A1	CGB-150-PP	CGB-150-B1	CGB-150-SS1
2"	CGB-200-A1	CGB-200-PP	CGB-200-B1	CGB-200-SS1
2-1/2"	CGB-250-A1		CGB-250-B1	CGB-250-SS1
3"	CGB-300-A1	CGB-300-PP	CGB-300-B1	CGB-300-SS1
4"	CGB-400-A1	CGB-400-PP	CGB-400-B1	CGB-400-SS1
5"	CGB-500-A1			
6"	CGB-600-A1			
8"	CGB-800-A1			

Industry Crossovers: Alum: 6192X PP: 35-92X Brass: 4492X 316SS: 6392X

## TYPE C - FEMALE COUPLER X HOSE SHANK



SIZE	PART# ALUMINUM	PART# (PP) POLYPROPYLENE	PART# BRASS	PART# 316 STAINLESS STEEL
1/2"	CGC-050-A1	CGC-050-PP	CGC-50-B1	CGC-050-SS1
3/4"	CGC-075-A1	CGC-075-PP	CGC-75-B1	CGC-075-SS1
1"	CGC-100-A1	CGC-100-PP	CGC-100-B1	CGC-100-SS1
1-1/4"	CGC-125-A1	CGC-125-PP	CGC-125-B1	CGC-125-SS1
1-1/2"	CGC-150-A1	CGC-150-PP	CGC-150-B1	CGC-150-SS1
2"	CGC-200-A1	CGC-200-PP	CGC-200-B1	CGC-200-SS1
2-1/2"	CGC-250-A1		CGC-250-B1	CGC-250-SS1
3"	CGC-300-A1	CGC-300-PP	CGC-300-B1	CGC-300-SS1
4"	CGC-400-A1	CGC-400-PP	CGC-400-B1	CGC-400-SS1
5"	CGC-500-A1			
6"	CGC-600-A1			CGC-600-SS1
8"	CGC-800-A1			

Industry Crossovers: Alum: 6193X PP: 35-93X Brass: 4493X 316SS: 6393X

## TYPE D - FEMALE COUPLER X FEMALE NPT



SIZE	PART# ALUMINUM	PART# (PP) POLYPROPYLENE	PART# BRASS	PART# 316 STAINLESS STEEL
1/2"	CGD-050-A1	CGD-050-PP	CGD-050-B1	CGD-050-SS1
3/4"	CGD-075-A1	CGD-075-PP	CGD-075-B1	CGD-075-SS1
1"	CGD-100-A1	CGD-100-PP	CGD-100-B1	CGD-100-SS1
1-1/4"	CGD-125-A1	CGD-125-PP	CGD-125-B1	CGD-125-SS1
1-1/2"	CGD-150-A1	CGD-150-PP	CGD-150-B1	CGD-150-SS1
2"	CGD-200-A1	CGD-200-PP	CGD-200-B1	CGD-200-SS1
2-1/2"	CGD-250-A1			CGD-250-SS1
3"	CGD-300-A1	CGD-300-PP	CGD-300-B1	CGD-300-SS1
4"	CGD-400-A1		CGD-400-B1	CGD-400-SS1
5"	CGD-500-A1			CGD-500-SS1
6"	CGD-600-A1			CGD-600-SS1
8"	CGD-800-A1			

Industry Crossovers: Alum: 6194X PP: 35-94X Brass: 4494X 316SS: 6394X

**WARNING:** This product can expose you to chemicals, including nickel, which are known to the State of California to cause cancer. For more information, visit [www.P65Warnings.ca.gov](http://www.P65Warnings.ca.gov)

**TYPE E - MALE ADAPTER X HOSE SHANK**


SIZE	PART# ALUMINUM	PART# (PP) POLYPROPYLENE	PART# BRASS	PART# 316 STAINLESS STEEL
1/2"	CGE-050-A1	CGE-050-PP		CGE-050-SS1
3/4"	CGE-075-A1	CGE-075-PP	CGE-75-B1	CGE-075-SS1
1"	CGE-100-A1	CGE-100-PP	CGE-100-B1	CGE-100-SS1
1-1/4"	CGE-125-A1	CGE-125-PP		CGE-125-SS1
1-1/2"	CGE-150-A1	CGE-150-PP	CGE-150-B1	CGE-150-SS1
2"	CGE-200-A1	CGE-200-PP	CGE-200-B1	CGE-200-SS1
2-1/2"	CGE-250-A1			
3"	CGE-300-A1	CGE-300-PP	CGE-300-B1	CGE-300-SS1
4"	CGE-400-A1	CGE-400-PP	CGE-400-B1	CGE-400-SS1
5"	CGE-500-A1			
6"	CGE-600-A1			CGE-600-SS1
8"	CGE-800-A1			

Industry Crossovers: Alum: 6195X PP: 35-95X Brass: 4495X 316SS: 6395X

**TYPE F - MALE ADAPTER X MALE NPT**


SIZE	PART# ALUMINUM	PART# (PP) POLYPROPYLENE	PART# BRASS	PART# 316 STAINLESS STEEL
1/2"	CGF-050-A1	CGF-050-PP	CGF-050-B1	CGF-050-SS1
3/4"	CGF-075-A1	CGF-075-PP	CGF-075-B1	CGF-075-SS1
1"	CGF-100-A1	CGF-100-PP	CGF-100-B1	CGF-100-SS1
1-1/4"	CGF-125-A1	CGF-125-PP		CGF-125-SS1
1-1/2"	CGF-150-A1	CGF-150-PP	CGF-150-B1	CGF-150-SS1
2"	CGF-200-A1	CGF-200-PP	CGF-200-B1	CGF-200-SS1
2-1/2"	CGF-250-A1		CGF-250-B1	
3"	CGF-300-A1	CGF-300-PP	CGF-300-B1	CGF-300-SS1
4"	CGF-400-A1	CGF-400-PP	CGF-400-B1	CGF-400-SS1
5"	CGF-500-A1			
6"	CGF-600-A1			CGF-600-SS1
8"	CGF-800-A1			

Industry Crossovers: Alum: 6196X PP: 35-96X Brass: 4496X 316SS: 6396X

**TYPE DC - DUST CAP**


SIZE	PART# ALUMINUM	PART# (PP) POLYPROPYLENE	PART# BRASS	PART# 316 STAINLESS STEEL
1/2"	CDC-050-A1	CDC-050-PP		CDC-050-SS1
3/4"	CDC-075-A1	CDC-075-PP		CDC-075-SS1
1"	CDC-100-A1	CDC-100-PP	CDC-100-B1	CDC-100-SS1
1-1/4"	CDC-125-A1	CDC-125-PP		CDC-125-SS1
1-1/2"	CDC-150-A1	CDC-150-PP		CDC-150-SS1
2"	CDC-200-A1	CDC-200-PP	CDC-200-B1	CDC-200-SS1
2-1/2"	CDC-250-A1			CDC-250-SS1
3"	CDC-300-A1	CDC-300-PP	CDC-300-B1	CDC-300-SS1
4"	CDC-400-A1	CDC-400-PP	CDC-400-B1	CDC-400-SS1
5"	CDC-500-A1			
6"	CDC-600-A1			CDC-600-SS1
8"	CDC-800-A1			

Industry Crossovers: Alum: 6197X PP: 35-97X Brass: 4497X 316SS: 6397X

**TYPE DP - DUST PLUG**


SIZE	PART# ALUMINUM	PART# (PP) POLYPROPYLENE	PART# BRASS	PART# 316 STAINLESS STEEL
1/2"	CDP-050-A1	CDP-050-PP		
3/4"	CDP-075-A1	CDP-075-PP		
1"	CDP-100-A1	CDP-100-PP	CDP-100-B1	CDP-100-SS1
1-1/4"	CDP-125-A1	CDP-125-PP		CDP-125-SS1
1-1/2"	CDP-150-A1	CDP-150-PP		CDP-150-SS1
2"	CDP-200-A1	CDP-200-PP	CDP-200-B1	CDP-200-SS1
2-1/2"	CDP-250-A1			
3"	CDP-300-A1	CDP-300-PP	CDP-300-B1	CDP-300-SS1
4"	CDP-400-A1	CDP-400-PP	CDP-400-B1	CDP-400-SS1
5"	CDP-500-A1			
6"	CDP-600-A1			
8"	CDP-800-A1			

Industry Crossovers: Alum: 6198X PP: 35-98X Brass: 4498X 316SS: 6398X

**WARNING:** This product can expose you to chemicals, including nickel, which are known to the State of California to cause cancer. For more information, visit www.P65Warnings.ca.gov

**PART A SPOOL ADAPTER -  
MALE ADAPTER X MALE ADAPTER**



SIZE	PART# ALUMINUM
2"	SA-200-A
2" x 3"	SA-2030-A
3"	SA-300-A
3" x 4"	SA-3040-A
4"	SA-400-A

Industry Crossovers: Alum: 61910

**PART A REDUCER ADAPTER -  
MALE ADAPTER X FEMALE PIPE**



SIZE	PART# ALUMINUM
3" x 4"	CGA-3040-A
4" x 3"	CGA-4030-A

**PART A SWIVEL ADAPTER -  
FEMALE PIPE**



SIZE	PART# ALUMINUM
3"	CGASV-300-A

**PART B REDUCER COUPLER -  
FEMALE COUPLER X MALE PIPE**



SIZE	PART# ALUMINUM
3" x 2"	CGB-3020-A
3" x 4"	CGB-3040-A

**PART D REDUCING COUPLER -  
FEMALE COUPLER X MALE ADAPTER**



SIZE	PART# ALUMINUM
2" x 1-1/2"	DA-2015-A
2" x 3"	DA-2030-A
3" x 1-1/2"	DA-3015-A
3" x 2"	DA-3020-A
3" x 4"	DA-3040-A
4" x 3"	DA-4030-A
6" x 4"	DA-6040-A

**PART D REDUCING COUPLER -  
FEMALE COUPLER X FEMALE PIPE**



SIZE	PART# ALUMINUM
3" x 2"	CGD-3020-A
4" x 3"	CGD-4030-A

**PART D SPOOL COUPLER -  
FEMALE COUPLER X FEMALE COUPLER**



SIZE	PART# ALUMINUM
2" x 2"	DD-2020-A
2" x 3"	DD-2030-A
3" x 3"	DD-3030-A
3" x 4"	DD-3040-A
4" x 4"	DD-4040-A

**PART F REDUCER ADAPTER -  
MALE ADAPTER X MIP**



SIZE	PART# ALUMINUM
3" x 4"	CGF-3040-A
4" x 3"	CGF-4030-A

**WARNING:** This product can expose you to chemicals, including nickel, which are known to the State of California to cause cancer. For more information, visit [www.P65Warnings.ca.gov](http://www.P65Warnings.ca.gov)

### TYPE A - MALE ADAPTER X FEMALE NPT



ALUM

SIZE	PART# ALUMINUM
1/2"	E-CGA-050-A1
3/4"	E-CGA-075-A1
1"	E-CGA-100-A1
1-1/4"	E-CGA-125-A1
1-1/2"	E-CGA-150-A1
2"	E-CGA-200-A1
2-1/2"	E-CGA-250-A1
3"	E-CGA-300-A1
4"	E-CGA-400-A1
5"	E-CGA-500-A1
6"	E-CGA-600-A1
8"	E-CGA-800-A1

### TYPE E - MALE ADAPTER X HOSE SHANK



ALUM

SIZE	PART# ALUMINUM
1/2"	E-CGE-050-A1
3/4"	E-CGE-075-A1
1"	E-CGE-100-A1
1-1/4"	E-CGE-125-A1
1-1/2"	E-CGE-150-A1
2"	E-CGE-200-A1
2-1/2"	E-CGE-250-A1
3"	E-CGE-300-A1
4"	E-CGE-400-A1
5"	E-CGE-500-A1
6"	E-CGE-600-A1
8"	E-CGE-800-A1

### TYPE B - FEMALE COUPLER X MALE NPT



ALUM

SIZE	PART# ALUMINUM
1/2"	E-CGB-050-A1
3/4"	E-CGB-075-A1
1"	E-CGB-100-A1
1-1/4"	E-CGB-125-A1
1-1/2"	E-CGB-150-A1
2"	E-CGB-200-A1
2-1/2"	E-CGB-250-A1
3"	E-CGB-300-A1
4"	E-CGB-400-A1
5"	E-CGB-500-A1
6"	E-CGB-600-A1
8"	E-CGB-800-A1

### TYPE F - MALE ADAPTER X MALE NPT



ALUM

SIZE	PART# ALUMINUM
1/2"	E-CGF-050-A1
3/4"	E-CGF-075-A1
1"	E-CGF-100-A1
1-1/4"	E-CGF-125-A1
1-1/2"	E-CGF-150-A1
2"	E-CGF-200-A1
2-1/2"	E-CGF-250-A1
3"	E-CGF-300-A1
4"	E-CGF-400-A1
5"	E-CGF-500-A1
6"	E-CGF-600-A1
8"	E-CGF-800-A1

### TYPE C - FEMALE COUPLER X HOSE SHANK



ALUM

SIZE	PART# ALUMINUM
1/2"	E-CGC-050-A1
3/4"	E-CGC-075-A1
1"	E-CGC-100-A1
1-1/4"	E-CGC-125-A1
1-1/2"	E-CGC-150-A1
2"	E-CGC-200-A1
2-1/2"	E-CGC-250-A1
3"	E-CGC-300-A1
4"	E-CGC-400-A1
5"	E-CGC-500-A1
6"	E-CGC-600-A1
8"	E-CGC-800-A1

### TYPE DC - DUST CAP



ALUM

SIZE	PART# ALUMINUM
1/2"	E-CDC-050-A1
3/4"	E-CDC-075-A1
1"	E-CDC-100-A1
1-1/4"	E-CDC-125-A1
1-1/2"	E-CDC-150-A1
2"	E-CDC-200-A1
2-1/2"	E-CDC-250-A1
3"	E-CDC-300-A1
4"	E-CDC-400-A1
5"	E-CDC-500-A1
6"	E-CDC-600-A1
8"	E-CDC-800-A1

### TYPE D - FEMALE COUPLER X FEMALE NPT



ALUM

SIZE	PART# ALUMINUM
1/2"	E-CGD-050-A1
3/4"	E-CGD-075-A1
1"	E-CGD-100-A1
1-1/4"	E-CGD-125-A1
1-1/2"	E-CGD-150-A1
2"	E-CGD-200-A1
2-1/2"	E-CGD-250-A1
3"	E-CGD-300-A1
4"	E-CGD-400-A1
5"	E-CGD-500-A1
6"	E-CGD-600-A1
8"	E-CGD-800-A1

### TYPE DP - DUST PLUG



ALUM

SIZE	PART# ALUMINUM
1/2"	E-CDP-050-A1
3/4"	E-CDP-075-A1
1"	E-CDP-100-A1
1-1/4"	E-CDP-125-A1
1-1/2"	E-CDP-150-A1
2"	E-CDP-200-A1
2-1/2"	E-CDP-250-A1
3"	E-CDP-300-A1
4"	E-CDP-400-A1
5"	E-CDP-500-A1
6"	E-CDP-600-A1
8"	E-CDP-800-A1

**WARNING:** This product can expose you to chemicals, including nickel, which are known to the State of California to cause cancer. For more information, visit [www.P65Warnings.ca.gov](http://www.P65Warnings.ca.gov)

**PART A SPOOL ADAPTER - MALE ADAPTER X MALE ADAPTER**



SIZE	PART# ALUMINUM
2"	E-SA-200-A
2" x 3"	E-SA-2030-A
3"	E-SA-300-A
3" x 4"	E-SA-3040-A
4"	E-SA-400-A

**PART A REDUCER ADAPTER - MALE ADAPTER X FEMALE PIPE**



SIZE	PART# ALUMINUM
3" x 4"	E-CGA-3040-A
4" x 3"	E-CGA-4030-A

**PART D REDUCING COUPLER - FEMALE COUPLER X MALE ADAPTER**



SIZE	PART# ALUMINUM
2" x 1-1/2"	E-DA-2015-A
2" x 3"	E-DA-2030-A
3" x 1-1/2"	E-DA-3015-A
3" x 2"	E-DA-3020-A
3" x 4"	E-DA-3040-A
4" x 3"	E-DA-4030-A
6" x 4"	E-DA-6040-A

**PART D REDUCING COUPLER - FEMALE COUPLER X FEMALE PIPE**



SIZE	PART# ALUMINUM
3" x 2"	E-CGD-3020-A
4" x 3"	E-CGD-4030-A

**PART D SPOOL COUPLER - FEMALE COUPLER X FEMALE COUPLER**



SIZE	PART# ALUMINUM
2" x 2"	E-DD-2020-A
2" x 3"	E-DD-2030-A
3" x 3"	E-DD-3030-A
3" x 4"	E-DD-3040-A
4" x 4"	E-DD-4040-A

**WARNING:** This product can expose you to chemicals, including nickel, which are known to the State of California to cause cancer. For more information, visit [www.P65Warnings.ca.gov](http://www.P65Warnings.ca.gov)

### Features - Self Locking Cam & Groove

- Automatic Self-Locking Arms prevent accidental disconnection.
- Machined multi-serrated shank with interlocking groove.
- Aluminum & Brass Self-Locking Arms.
- 316 Stainless with Investment Cast Self-Locking Arms.
- 2" @250 psi 3" & 4" @150 psi 6" @75 psi
- 6" @150 psi 4 arms
- Designed for use with Buchanan Crimp Sleeves and Interlocking Ferrules.

### TYPE B - FEMALE COUPLER X MALE NPT



ALUM



316 SS

SIZE	PART# ALUMINUM	PART# 316 STAINLESS STEEL
2"	CGBSL-200-A1	CGBSL-200-SS1
3"	CGBSL-300-A1	CGBSL-300-SS1
4"	CGBSL-400-A1	CGBSL-400-SS1

### TYPE C - FEMALE COUPLER X HOSE SHANK



ALUM



316 SS

SIZE	PART# ALUMINUM	PART# 316 STAINLESS STEEL
2"	CGCSL-200CR-A1	CGCSL-200CR-SS1
3"	CGCSL-300CR-A1	CGCSL-300CR-SS1
4"	CGCSL-400CR-A1	CGCSL-400CR-SS1
6"	CGCSL-600CR-A1	

### TYPE D - FEMALE COUPLER X FEMALE NPT



ALUM



316 SS

SIZE	PART# ALUMINUM	PART# 316 STAINLESS STEEL
2"	CGDSL-200-A1	CGDSL-200-SS1
3"	CGDSL-300-A1	CGDSL-300-SS1
4"	CGDSL-400-A1	CGDSL-400-SS1
6"	CGDSL-600-A1	CGDSL-600-SS1

### TYPE DC - DUST CAP



ALUM



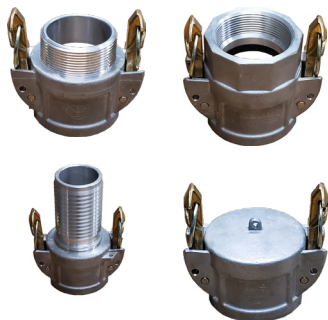
316 SS

SIZE	PART# ALUMINUM	PART# 316 STAINLESS STEEL
2"	CDCSL-200-A1	CDCSL-200-SS1
3"	CDCSL-300-A1	CDCSL-300-SS1
4"	CDCSL-400-A1	CDCSL-400-SS1
6"	CDCSL-600-A1	

 ⚠ WARNING: This product can expose you to chemicals, including nickel, which are known to the State of California to cause cancer. For more information, visit [www.P65Warnings.ca.gov](http://www.P65Warnings.ca.gov)



**SELF LOCKING CAM & GROOVE**



**STAINLESS STEEL & ALUMINUM**

**UNIVERSAL FITTINGS**



**CRIMPLOCK KING NIPPLES**

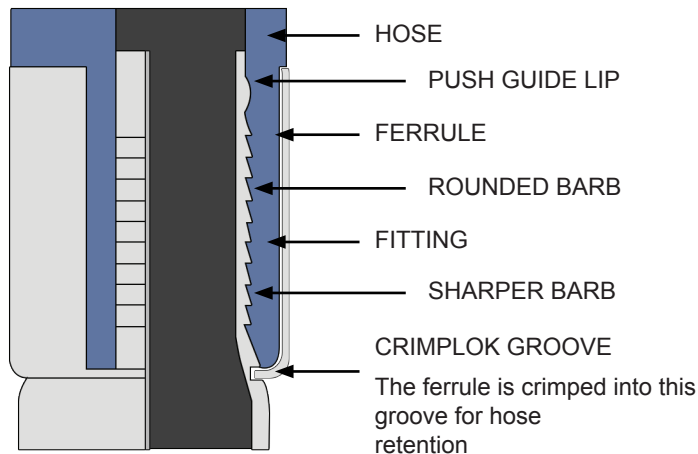


**CRIMPLOK FERRULES - PLATED STEEL - STAINLESS STEEL ALUMINUM**



**SOLID DEPENDABLE SAFE**

**FEATURES AND BENEFITS**



**Crimplok is the best way to ensure a perfect hose connection every time!**

- All fittings have a Crimplok groove for the ferrule end the Lok into for a strong permanent seal.
- Serrations on the couplings and fittings are not as sharp at the top, but become sharper towards the Crimplok groove.
- The length of the barb and sleeve/ ferrule are matched for a safer, cleaner connection.
- Crimplok connections do not have sharp clamp buckles or edges
- Interchangeable with most market systems

**WARNING:** This product can expose you to chemicals, including nickel, which are known to the State of California to cause cancer. For more information, visit [www.P65Warnings.ca.gov](http://www.P65Warnings.ca.gov)

**TYPE C - FEMALE COUPLER X HOSE SHANK**



SIZE	PART# ALUMINUM	PART# 316 STAINLESS STEEL
1"		CGC-100CR-SS1
1-1/2"	CGC-150CR-A1	CGC-150CR-SS1
2"	CGC-200CR-A1	CGC-200CR-SS1
2-1/2"	CGC-250CR-A1	
3"	CGC-300CR-A1	CGC-300CR-SS1
4"	CGC-400CR-A1	CGC-400CR-SS1
6"	CGC-600CR-A1	

**TYPE E - MALE ADAPTER X HOSE SHANK**



SIZE	PART# ALUMINUM	PART# 316 STAINLESS STEEL
1"		CGE-100CR-SS1
1-1/2"	CGE-150CR-A1	CGE-150CR-SS1
2"	CGE-200CR-A1	CGE-200CR-SS1
2-1/2"	CGE-250CR-A1	
3"	CGE-300CR-A1	CGE-300CR-SS1
4"	CGE-400CR-A1	CGE-400CR-SS1
6"	CGE-600CR-A1	

**Note:** For use with CRIMPLOK Ferrules CF-XXXX-SS304

**QUICKLOK HANDLE FOR SS AND ALUMINUM**



SIZE	PART#
1-1/2" - 2"	HSK5-200-SS
3" - 4"	HSK5-300-SS

**INVESTMENT CAST STAINLESS STEEL HANDLE, RING & PIN**



SIZE	PART#
3" & 4"	61452

**SAFETY CLIP**



SIZE	PART #
1-1/4" - 2-1/2"	66015

**FORGED BRASS HANDLE - RING & PIN STEEL**



SIZE	PART#
3/4"	61455
1-1/4" - 2-1/2"	61451
3" & 4"	61453
6"	61457

**CAMLOCK GASKET EPDM**



SIZE	PART#
2"	CG-200-EPDM
3"	CG-300-EPDM

**CAMLOCK GASKET VITON**



SIZE	PART#
1"	CG-100-VI
2"	CG-200-VI
3"	CG-300-VI
4"	CG-400-VI

**CAMLOCK GASKET NBR**



SIZE	PART#
3/4"	CG-075-NBR
1"	CG-100-NBR
1-1/4"	CG-125-NBR
1-1/2"	CG-150-NBR
2"	CG-200-NBR
2-1/2"	CG-250-NBR
3"	CG-300-NBR
4"	CG-400-NBR
6"	CG-600-NBR
8"	CG-800-NBR

**BUNA-N GASKET**



SIZE	PART#
1/2"	BG50
3/4"	BG75
1"	BG100
1-1/4"	BG125
1-1/2"	BG150
2"	BG200
2-1/2"	BG250
3"	BG300
4"	BG400
6"	BG600

⚠ **WARNING:** This product can expose you to chemicals, including nickel, which are known to the State of California to cause cancer. For more information, visit [www.P65Warnings.ca.gov](http://www.P65Warnings.ca.gov)

HOSE ACCESSORIES

## COMBINATION NIPPLE - HOSE BARB X MALE PIPE



SIZE	PART# ALUMINUM	PART# BRASS	PART# STEEL	PART# ZINC PLATED STEEL	PART# 316 STAINLESS STEEL
1/2"	CNT-050-A		CNT-050-S	CNT-050-SP	CNT-050-SS316
3/4"	CNT-075-A	CNT-075-B	CNT-075-S	CNT-075-SP	CNT-075-SS316
1"	CNT-100-A	CNT-100-B	CNT-100-S	CNT-100-SP	CNT-100-SS316
1-1/4"	CNT-125-A	CNT-125-B	CNT-125-S	CNT-125-SP	CNT-125-SS316
1-1/2"	CNT-150-A	CNT-150-B	CNT-150-S	CNT-150-SP	CNT-150-SS316
2"	CNT-200-A	CNT-200-B	CNT-200-S	CNT-200-SP	CNT-200-SS316
2-1/2"	CNT-250-A	CNT-250-B	CNT-250-S	CNT-250-SP	CNT-250-SS316
3"	CNT-300-A	CNT-300-B	CNT-300-S	CNT-300-SP	CNT-300-SS316
4"	CNT-400-A		CNT-400-S	CNT-400-SP	CNT-400-SS316
5"				CNT-500-SP	
6"			CNT-600-S	CNT-600-SP	
8"				CNT-800-SP	

## COMBINATION NIPPLE EXPANDER/REDUCER - HOSE BARB X MALE PIPE



SIZE	PART # ZINC PLATED STEEL
3/4" x 1"	973862
1" x 3/4"	973884
1" x 1-1/4"	973863
1-1/4" x 1"	973885
1-1/4" x 1-1/2"	973886
1-1/2" x 1-1/4"	973887
1-1/2" x 2"	973864
2" x 1-1/2"	973888
2" x 2-1/2"	973859
2-1/2" x 2"	973869
2-1/2" x 3"	973865
3" x 2-1/2"	973868

## VICTAULIC GROOVED COMBINATION NIPPLE



SIZE	PART# STEEL	PART# ZINC PLATED STEEL
2"	CNG-200-S	CNG-200-SP
3"	CNG-300-S	CNG-300-SP
4"	CNG-400-S	CNG-400-SP
6"	CNG-600-S	CNG-600-SP

## CRIMPLOK CRIMP UNIVERSAL FITTINGS



SIZE	PART#	MAX OPERATING PSI @ 70°F
1/2"	HE-050CF-SP	150
3/4"	HE-075CF-SP	150
3/4"	HE-075CR-SP	150
1"	HE-100CF-SP	150
1"	HE-100CR-SP	150
1"	HE-101CF-SP	150

## HIGH PRESSURE FEMALE STEM



SIZE	PART#
1-1/4"	GJS-125CR-DP
1-1/2"	GJS-150CR-DP
2"	GJS-200CR-DP
2-1/2"	GJS-250CR-DP
3"	GJS-300CR-DP
4"	GJS-400CR-SP

## HIGH PRESSURE MALE STEM



SIZE	PART#
1-1/4"	GJM-125CR-DP
1-1/2"	GJM-150CR-DP
2"	GJM-200CR-DP
2-1/2"	GJM-250CR-DP
3"	GJM-300CR-DP
4"	GJM-400CR-SP

WARNING: This product can expose you to chemicals, including nickel, which are known to the State of California to cause cancer. For more information, visit www.P65Warnings.ca.gov

## CRIMPLOK CRIMP COMBINATION NIPPLE



PLATED STEEL      316SS

SIZE	PART# PLATED STEEL	PART# 316 STAINLESS STEEL
1"	CNT-100CR-SP	CNT-100CR-SS316
1-1/4"	CNT-125CR-SP	CNT-125CR-SS316
1-1/2"	CNT-150CR-SP	CNT-150CR-SS316
2"	CNT-200CR-SP	CNT-200CR-SS316
2-1/2"	CNT-250CR-SP	CNT-250CR-SS316
3"	CNT-300CR-SP	CNT-300CR-SS316
4"	CNT-400CR-SP	CNT-400CR-SS316
6"	CNT-600CR-SP	CNT-600CR-SS316

**CNT Plated Steel:** For use with CRIMPLOK Ferrules CF-XXXXX-SP  
**CNT 316SS:** For use with CRIMPLOK Ferrules CF-XXXXX-SS304

## CRIMPLOK CRIMP VICTAULIC COMBINATION NIPPLE



PLATED STEEL      316SS

SIZE	PART# PLATED STEEL	PART# 316 STAINLESS STEEL
2"	CNG-200CR-SP	CNG-200CR-SS316
2-1/2"		CNG-250CR-SS316
3"	CNG-300CR-SP	CNG-300CR-SS316
4"	CNG-400CR-SP	CNG-400CR-SS316
6"	CNG-600CR-SP	

**CNG Plated Steel:** For use with CRIMPLOK Ferrules CF-XXXXX-SP  
**CNG 316 Stainless Steel:** For use with CRIMPLOK Ferrules CF-XXXXX-SS304

## CRIMPLOK COMBINATION NIPPLE LONG NPT



PLATED STEEL

SIZE	PART# PLATED STEEL
2"	CNL-200CR-SP
2-1/2"	CNL-250CR-SP
3"	CNL-300CR-SP
4"	CNL-400CR-SP

**CNL Plated Steel:** For use with CRIMPLOK Long Ferrules CF-XXXXXL-SP

## CRIMPLOK CRIMP TURNBACK COMBINATION NIPPLE



STEEL      316SS

SIZE	PART# PLATED STEEL	PART# 316 STAINLESS STEEL
2"	CNTB-200CR-S	CNTB-200CR-SS316
3"	CNTB-300CR-S	CNTB-300CR-SS316
4"	CNTB-400CR-S	CNTB-400CR-SS316
6"	CNTB-600CR-S	CNTB-600CR-SS316

**CNTB Steel:** For use with CRIMPLOK Ferrules CF-XXXXX-SP  
**CNTB 316 Stainless Steel:** For use with CRIMPLOK Ferrules CF-XXXXX-SS304

## CRIMPLOK HD COMBINATION NIPPLE



PLATED STEEL      UNPLATED STEEL

SIZE	PART# PLATED STEEL	PART# STEEL
4"	CNT-400CS-SP	CNT-400CS-S
6"	CNT-600CS-SP	CNT-600CS-S
8"	CNT-800CS-SP	CNT-800CS-S

**CNT Plated & Unplated Steel:** For use with CRIMPLOK Sleeves CSL-XXXXX-SP

## CRIMPLOK CRIMP SQUARE CUT COMBINATION NIPPLE UNPLATED



UNPLATED STEEL

SIZE	PART# STEEL
3"	CNSC-300CR-SP
4"	CNSC-400CR-SP

**CNSC Unplated Steel:** For use with CRIMPLOK Ferrules CF-XXXXX-SP

## CRIMPLOK HD COMBINATION NIPPLE



PLATED STEEL      UNPLATED STEEL

SIZE	PART# PLATED STEEL	PART# STEEL
4"	CNG-400CS-SP	CNG-400CS-S
6"	CNG-600CS-SP	CNG-600CS-S
8"	CNG-800CS-SP	CNG-800CS-S

**CNG Plated & Unplated Steel:** For use with CRIMPLOK Sleeves CSL-XXXXX-SP

## CRIMPLOK FIXED FLANGE NIPPLE 125 - 150#



STEEL      316SS

SIZE	PART# STEEL	PART# 316 STAINLESS STEEL
2"	CNFL-200CR-S	CNFL-200CR-SS316
3"	CNFL-300CR-S	CNFL-300CR-SS316
4"	CNFL-400CR-S	CNFL-400CR-SS316
6"	CNFL-600CR-S	CNFL-600CR-SS316

**CNTB Steel:** For use with CRIMPLOK Ferrules CF-XXXXX-SP  
**CNTB 316 Stainless Steel:** For use with CRIMPLOK Ferrules CF-XXXXX-SS304

**WARNING:** This product can expose you to chemicals, including nickel, which are known to the State of California to cause cancer. For more information, visit [www.P65Warnings.ca.gov](http://www.P65Warnings.ca.gov)

HOSE ACCESSORIES

## HOSE MENDERS



STEEL



PLATED STEEL



BRASS



316SS

SIZE	PART# PLAIN STEEL	PART# PLATED STEEL	PART# BRASS	PART# 316 STAINLESS STEEL
3/8"		HM-038-SP		
1/2"	HM-050-S	HM-050-SP		HM-050-SS
5/8"		HM-063-SP		
3/4"	HM-075-S	HM-075-SP	73983	HM-075-SS
1"	HM-100-S	HM-100-SP	73984	HM-100-SS
1-1/4"	HM-125-S	HM-125-SP		HM-125-SS
1-1/2"	HM-150-S	HM-150-SP		HM-150-SS
2"	HM-200-S	HM-200-SP		HM-200-SS
2-1/2"		HM-250-SP		HM-250-SS
3"	HM-300-S	HM-300-SP		HM-300-SS
4"		HM-400-SP		HM-400-SS
6"	HM-600-S	HM-600-SP		

## MALE NPT ENDS



SIZE	PART #
1/4"	ME-025-SP
3/8"	ME-038-SP
1/2"	ME-050-SP
3/4"	ME-075-SP
1"	ME-100-SP

### Features

- Twist Claw / Universal / Chicago
- Malleable Iron
- ISO PSI
- Safety Clip Included

## HOSE END



SIZE	PART #
3/8"	HE-038-SP
1/2"	HE-050-SP
3/4"	HE-075-SP
1"	HE-100-SP

### Features

- Safety Clip Included

## WASHER



PART #
66000

## TRIPLE CONNECTIONS



PART #
UW-300-SP

## FEMALE NPT ENDS



SIZE	PART #
1/4"	FE-025-SP
3/8"	FE-038-SP
1/2"	FE-050-SP
3/4"	FE-075-SP
1"	FE-100-SP
1-1/4"	FE-125-SP
1-1/2"	FE-150-SP
2"	FE-200-SP

### Features

- Safety Clip Included

## UNIVERSAL BLANK END



PART #
BE-300-SP

⚠ WARNING: This product can expose you to chemicals, including nickel, which are known to the State of California to cause cancer. For more information, visit [www.P65Warnings.ca.gov](http://www.P65Warnings.ca.gov)

## 2 BOLT - HIGH PRESSURE CLAMP



HOSE ID	PART #	CLAMPING RANGE		MAX BOLT TORQUE
		MIN.	MAX.	
3/4"	BC2-075A-DP	1-5/32"	1-9/32"	21FT LBS
3/4"	BC2-075C-DP	1-5/16"	1-1/2"	21FT LBS

## 4 BOLT - HIGH PRESSURE CLAMP



HOSE ID	PART #	CLAMPING RANGE		MAX BOLT TORQUE
		MIN.	MAX.	
1"	BC4-100B-DP	1.53"	1.72"	21FT LBS
1-1/4"	BC4-125-DP	2.06"	2.25"	40FT LBS
2"	BC4-200A-DP	2-11/32"	2-17/32"	60FT LBS
2-1/2"	BC4-200-DP	3-3/32"	3-7/16"	60FT LBS

## HIGH PRESSURE MALE STEM



SIZE	PART #
1/2"	GJM-050-SP
3/4"	GJM-075-SP
1"	GJM-100-SP
1-1/4"	GJM-125-DP

## SHORT SHANK ALUMINUM NPS SET



SIZE	PART #
2"	PL-200-AD
3"	PL-300-AD

FEMALE END	
SIZE	PART #
2"	PF-200-AD
3"	PF-300-AD

## MALE PIPE STEM ONLY



SIZE	PART #
1/2"	73043
3/4"	73044
1"	73045
1-1/4"	73046

MALE END	
SIZE	PART #
2"	PM-200-A
3"	PM-300-A

**WARNING:** This product can expose you to chemicals, including nickel, which are known to the State of California to cause cancer. For more information, visit [www.P65Warnings.ca.gov](http://www.P65Warnings.ca.gov)

## LARGE SAFETY CHECK FOR HOSE/HOSE AND HOSE/TOOL



SIZE	PART #
1-1/2" HOSE, 37" LONG	WHIP-L
1/2"- 1-1/4" HOSE 22" LONG	WHIP-S

## FOOT VALVE



SIZE	PART #
2"	FV-200-DP
3"	FV-300-DP
4"	FV-400-DP
6"	FV-600-DP

## STRAINER ROUND HOLE



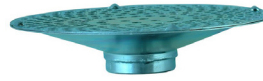
SIZE	PART #
2"	SR-200-SP
2-1/2"	SR-250-SP
3"	SR-300-SP
4"	SR-400-SP
6"	SR-600-SP
8"	SR-800-SP

## STRAINER ROUND HOLE LONG THIN



SIZE	PART #
2"	SL-200-SP
3"	SL-300-SP

## STRAINER BOTTOM HOLE



SIZE	PART #
2"	SB-200-SP
3"	SB-300-SP

## STRAINER CONE ROUND HOLE



SIZE	PART #
3"	SCR-300-SS304
4"	SCR-400-SS304

## PLASTIC FOG NOZZLE GHT



SIZE	PART #
3/4"	FN-075

## PLASTIC FOG NOZZLE NPS



SIZE	PART #
1"	FN-100
1-1/2"	FN-150
2"	FN-200

## GREEN ABS FOG NOZZLE GHT



SIZE	PART #
3/4"	FN-075G

⚠ WARNING: This product can expose you to chemicals, including nickel, which are known to the State of California to cause cancer. For more information, visit [www.P65Warnings.ca.gov](http://www.P65Warnings.ca.gov)

**HYDRANT ADAPTERS - BRASS**


SIZE & DESCRIPTION	PART #
1-1/2" NST x 3/4" GHT	444011
2-1/2" NST x 3/4" GHT	444000
2-1/2" NST x 3/4" NPT	444001
2-1/2" NST x 1" NPT	444002
2-1/2" NST x 1-1/2" NPT	444005
2-1/2" NST x 2" NPSH	444007
2-1/2" NST x 2" NPT	444008
2-1/2" NST x 1-1/2" NST	444006

**DOUBLE MALE HEX NIPPLE - BRASS**


SIZE & DESCRIPTION	PART #
1-1/2" NPT x 1-1/2" NPSH	444042
1-1/2" NPT x 1-1/2" NST	444040
2" NPT x 2-1/2" NST	444048
2-1/2" NPT x 2-1/2" NST	444045
3" NPT x 2-1/2" NST	444049

**FEMALE TO MALE HEX ADAPTER - BRASS**


SIZE & DESCRIPTION	PART #
1-1/2" NST x 1-1/2" NPSH	444021
1-1/2" NPT x 1-1/2" NPSH	444023
1-1/2" NST x 1-1/2" NPT	444020
2 NPT x 2-1/2" NST	444318
2-1/2" NST x 2-1/2" NPT	444026

**MALE SWIVEL ADAPTER - BRASS W/LUGS**


SIZE & DESCRIPTION	PART #
2-1/2" NST x 2" NPT	444111
2-1/2" NST x 2-1/2" NPT	444112
2-1/2" NST x 3" NPT	444113

**CAP - BRASS**


SIZE & DESCRIPTION	PART #
1-1/2" NST	444060
2-1/2" NST	444062

**BRASS NOZZLE - W/ ISOPRENE RUBBER GASKET**


SIZE & DESCRIPTION	PART #
3/4" NPSH	HN-075-B
1" NPSH	HN-100-B
1-1/4" NPSH	HN-125-B
2-1/2" NPSH	HN-250-B

⚠️ **WARNING:** This product can expose you to chemicals, including nickel, which are known to the State of California to cause cancer. For more information, visit [www.P65Warnings.ca.gov](http://www.P65Warnings.ca.gov)



## HAMMER UNION - FIG 100



SIZE	PART#
2"	HAM100-200-SET
3"	HAM100-300-SET
4"	HAM100-400-SET
6"	HAM100-600-SET
8"	HAM100-800-SET
10"	HAM100-1000-SET

### Applications & Features

- Economical and for use in water, oil and gas low pressure applications up to 1,000 PSI CWP.
- Color coded with Yellow subs and Black nut.

## HAMMER UNION - FIG 200 / 206



SIZE	PART# FIG 200	PART # FIG 206
1"	HAM200-100-SET	
2"	HAM200-200-SET	HAM206-200-SET
3"	HAM200-300-SET	HAM206-300-SET
4"	HAM200-400-SET	HAM206-400-SET
5"	HAM200-500-SET	HAM206-500-SET
6"		HAM206-600-SET
8"		HAM206-800-SET

### Applications & Features

- Medium pressure for use in water, oil and gas applications up to 2,000 PSI CWP.
- Color coded with Grey subs and Blue Nut.
- The O-Ring in the Male Sub of the FIG206 spec provides greater sealing and protects metal-to-metal seal against corrosion.

## CRIMPLOK HAMMER UNION - FIG 100



SIZE	PART#
4"	HAM100-400CR-SET
6"	HAM100-600CR-SET
6"	HAM100-600CR-FEMALE
6"	HAM100-600CR-MALE
6"	HAM100-600-NUT

### Applications & Features

- Our hose barb union is constructed of high quality forged steel. The integral hose shank is featured on both the male and female subs. Both time and money is saved by combining the unions with the integral shanks. No more welding hammer unions to combination nipples.
- Fig 100 (black nut) configurations for dewatering applications
- Fig 200/206 (blue nut) configurations for Frac and Steam applications where a gasket seal is preferred.
- The union end connection is interchangeable with all major hammer union manufacturers products.

## CRIMPLOK HAMMER UNION - FIG 206



SIZE	PART#
4"	HAM206-400CR-SET
4"	HAM206-400CR-FEMALE
4"	HAM206-400CR-MALE
4"	HAM206-NUT

⚠ WARNING: This product can expose you to chemicals, including nickel, which are known to the State of California to cause cancer. For more information, visit [www.P65Warnings.ca.gov](http://www.P65Warnings.ca.gov)