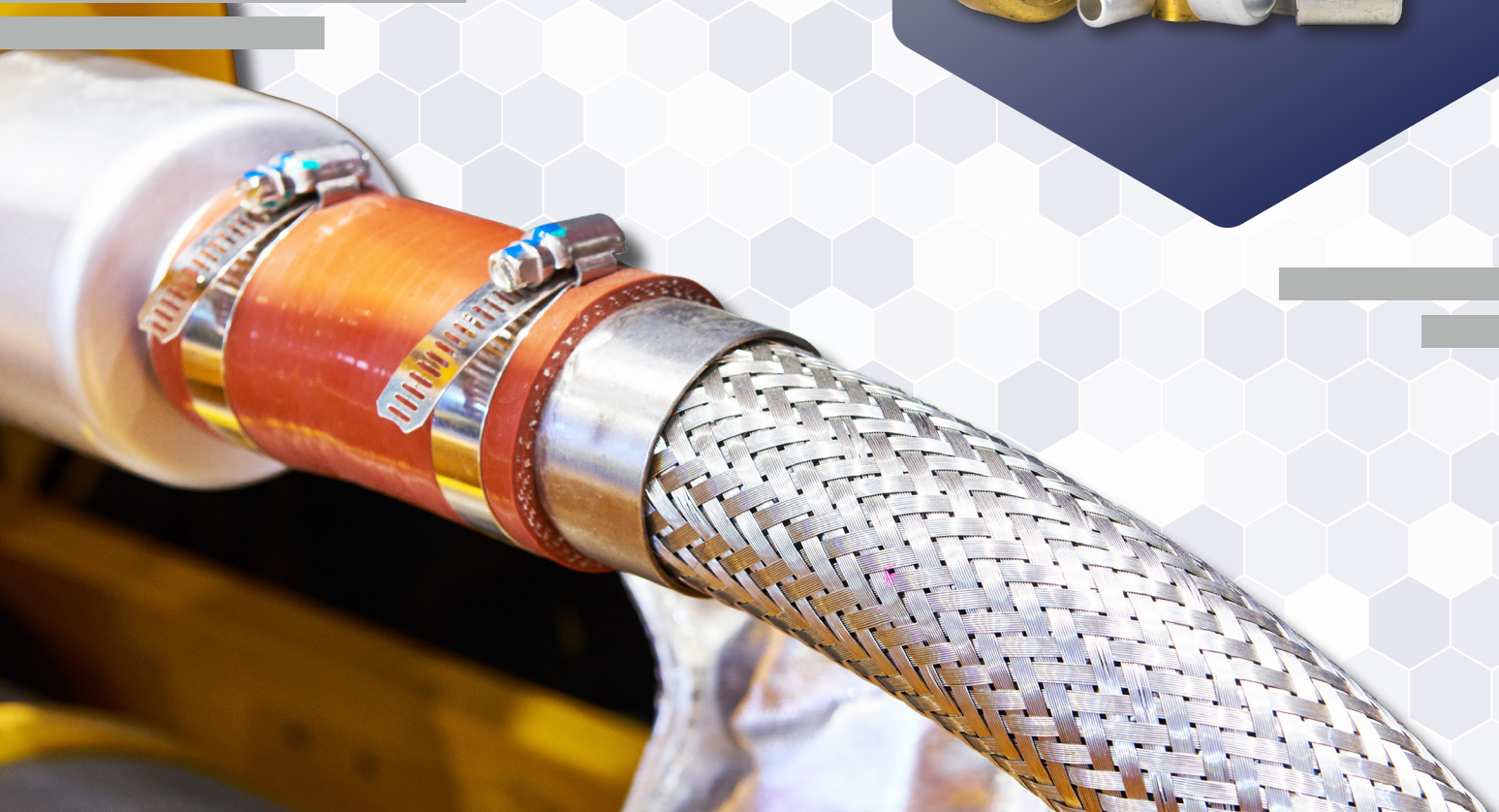




FEATURING NEW & EXPANDED PRODUCT LINES

HOSE CLAMPS & FERRULES


*Worm Gear, Quick Release,
T-Bolt, Muffler, Exhaust, Ear,
Marine, & Rubber Lined Clamps
Clamping Tools, Hose Ferrules
& More*



CALL US
PHONE: 800-821-5725

VISIT US
MIDLANDINDUSTRIES.COM

9311 TROOST AVE.,
KANSAS CITY, MO 64131

FIND US ON:   



⚠️ **WARNING:** This product can expose you to chemicals, including chromium, which are known to the State of California to cause cancer. For more information, visit www.P65Warnings.ca.gov

	<p>WORM GEAR & MARINE WORM GEAR</p>		<p>QUICK RELEASE</p>
	<p>MEGA & MAXI T-BOLT</p>		<p>SPRING LOADED T-BOLT</p>
	<p>CONSTANT TORQUE & V-BAND</p>		<p>DOUBLE BOLT</p>
	<p>SPIRAL MAXI</p>		<p>MUFFLER & EXHAUST</p>
	<p>1 EAR, 2 EAR, & GAPLESS</p>		<p>HAMMERLOCK & PUNCH-LOK</p>
	<p>CLAMPING TOOLS</p>		<p>NON-PERFORATED & LINED BAND MARINE</p>
	<p>RUBBER LINED</p>		<p>HOSE FERRULES</p>

300 SERIES - MINIATURE WORM GEAR CLAMP



SIZE	PART #	DIA. RANGE		BOX/CASE
		MIN.	MAX.	
5/16" Band 1/4" Screw	3000004	7/32"	5/8"	200/2400
	3000005	7/16"	11/16"	200/2400
	3000006	5/16"	7/8"	200/2400
	3000008	7/16"	1"	200/1200
	3000010	1/2"	1-1/16"	200/1200
	3000012	9/16"	1-1/4"	200/1200
	3000016	11/16"	1-1/2"	200/1200
	3000020	7/8"	1-3/4"	200/1200

Features

- 5/16" Wide 301 Stainless Steel Band
- 1/4" Hex Slotted Carbon Steel Screw
- Carbon Steel Housing
- Mechanically interlocked, 3-piece construction for service sealing pressure without spot welding.

Applications

- Marine
- Agricultural
- Industrial
- Automotive

Corrosion resistance varies with stainless components.

600 SERIES - WORM GEAR BAND CLAMP



SIZE	PART #	#	DIA. RANGE		BAG/CASE
			MIN.	MAX.	
1/2" Band 5/16" Screw	600006	6	3/8"	7/8"	100/600
	600008	8	7/16"	1"	100/600
	600010	10	9/16"	1-1/16"	100/600
	600012	12	9/16"	1-1/4"	100/600
	600016	16	11/16"	1-1/2"	100/600
	600020	20	3/4"	1-3/4"	100/300
	600024	24	1-1/16"	2"	100/300
	600028	28	1-5/16"	2-1/4"	100/300
	600032	32	1-9/16"	2-1/2"	100/300
	600036	36	1-13/16"	2-3/4"	50/200
	600040	40	2-1/16"	3"	50/200
	600044	44	2-5/16"	3-1/4"	50/200
	600048	48	2-9/16"	3-1/2"	50/200
	600052	52	2-13/16"	3-3/4"	25/100
	600056	56	3-1/16"	4"	25/100
	600060	60	3-5/16"	4-1/4"	25/100
	600064	64	2-1/2"	4-1/2"	25/100
	600072	72	3"	5"	25/100
	600080	80	3-1/2"	5-1/2"	10/100
	600088	88	4"	6"	10/100
600096	96	4-1/2"	6-1/2"	10/100	
600104	104	5"	7"	10/100	

Features

- 1/2" Wide 201 Stainless Steel Band
- 5/16" Hex Slotted Carbon Steel Screw
- Carbon Steel Housing
- 50lb/inch Torque Rating die set function.
- No PSI Rating

Applications

- General Purpose
- Automobiles
- Plumbing
- Home & Garden

Corrosion resistance varies with stainless components.

⚠ WARNING: This product can expose you to chemicals, including chromium, which are known to the State of California to cause cancer. For more information, visit www.P65Warnings.ca.gov

CLAMPS & FERRULES

325 SERIES - MINIATURE WORM GEAR CLAMP



SIZE	PART #	DIA. RANGE		BOX/CASE
		MIN.	MAX.	
5/16" Band 1/4" Screw	325004	7/32"	5/8"	200/2400
	325005	7/16"	11/16"	200/2400
	325006	5/16"	7/8"	200/2400
	325008	7/16"	1"	200/1200
	325010	1/2"	1-1/16"	200/1200
	325012	9/16"	1-1/4"	200/1200
	325016	11/16"	1-1/2"	200/1200
325020	7/8"	1-3/4"	200/1200	

Features

- 5/16" Wide 301 Stainless Steel Band
- 1/4" Hex Slotted Carbon Steel Screw
- 301 Stainless Steel Housing
- Mechanically interlocked, 3-piece construction for service sealing pressure without spot welding.

Applications

- Agricultural
- Industrial
- Automotive

Corrosion resistance varies with stainless components.

⚠ **WARNING:** This product can expose you to chemicals, including chromium, which are known to the State of California to cause cancer. For more information, visit www.P65Warnings.ca.gov

611 SERIES - BAND WORM GEAR CLAMP



SIZE	PART #	#	DIA. RANGE		BAG/CASE
			MIN.	MAX.	
1/2" Band 5/16" Screw	611006	6	3/8"	7/8"	100/600
	611008	8	7/16"	1"	100/600
	611010	10	9/16"	1-1/16"	100/600
	611012	12	9/16"	1-1/4"	100/600
	611016	16	11/16"	1-1/2"	100/600
	611020	20	3/4"	1-3/4"	100/300
	611024	24	1-1/16"	2"	100/300
	611028	28	1-5/16"	2-1/4"	100/300
	611032	32	1-9/16"	2-1/2"	100/300
	611036	36	1-13/16"	2-3/4"	50/200
	611040	40	2-1/16"	3"	50/200
	611044	44	2-5/16"	3-1/4"	50/200
	611048	48	2-9/16"	3-1/2"	50/200
	611052	52	2-13/16"	3-3/4"	25/100
	611056	56	3-1/16"	4"	25/100
	611060	60	3-5/16"	4-1/4"	25/100
	611064	64	2-1/2"	4-1/2"	25/100
	611072	72	3"	5"	25/100
	611080	80	3-1/2"	5-1/2"	10/100
	611088	88	4"	6"	10/100
	611096	96	4-1/2"	6-1/2"	10/100
	611104	104	5"	7"	10/100
	611116	116	5-3/4"	7-3/4"	100/100
	611128	128	6-1/2"	8-1/2"	100/100
	611152	152	2"	10"	100/100
	611164	164	1-3/4"	10-3/4"	100/100
	611176	176	9-1/4"	11-1/4"	100/100
	611188	188	2-1/16"	12-1/4"	100/100
	611200	200	11"	13"	100/100
	611212	212	11-3/4"	13-3/4"	100/100
	611224	224	12-1/2"	14-1/2"	100/100
	611248	248	10-3/4"	16"	100/100
	611270	270	15-3/8"	17-3/8"	100/100
611312	312	18"	20"	100/100	
611332	332	19-1/8"	21-1/4"	100/100	
611390	390	22-7/8"	24-7/8"	100/100	

Features

- 1/2" Wide 201 Stainless Steel Band
- 5/16" Hex Slotted Carbon Steel Screw
- 301 Stainless Steel Housing
- 50lb/inch Torque Rating die set function.
- No PSI Rating

Applications

- General Purpose
- Automobiles
- Plumbing
- Home & Garden

Corrosion resistance varies with stainless components.

350 SERIES - STAINLESS STEEL MINIATURE WORM GEAR CLAMP



SIZE	PART #	DIA. RANGE		BOX/CASE
		MIN.	MAX.	
5/16" Band 1/4" Screw	350004	7/32"	5/8"	200/2400
	350005	7/16"	11/16"	200/2400
	350006	5/16"	7/8"	200/2400
	350008	7/16"	1"	200/1200
	350010	1/2"	1-1/16"	200/1200
	350012	9/16"	1-1/4"	200/1200
	350016	11/16"	1-1/2"	200/1200
	350020	7/8"	1-3/4"	200/1200

Features

- 5/16" Wide 301 Stainless Steel Band
- 1/4" Hex Slotted 410 Stainless Steel Screw
- 301 Stainless Steel Housing
- 6mm Thickness
- Mechanically interlocked, 3-piece construction for service sealing pressure without spot welding.

Applications

- Agricultural
 - Automotive
 - Industrial
- Corrosion resistance varies with stainless components.*

620 SERIES - STAINLESS STEEL WORM GEAR BAND CLAMP



SIZE	PART #	#	DIA. RANGE		BOX/CASE
			MIN.	MAX.	
1/2" Band 5/16" Screw	620006	6	3/8"	7/8"	100/600
	620008	8	7/16"	1"	100/600
	620010	10	9/16"	1-1/16"	100/600
	620012	12	9/16"	1-1/4"	100/600
	620016	16	11/16"	1-1/2"	100/600
	620020	20	3/4"	1-3/4"	100/300
	620024	24	1-1/16"	2"	100/300
	620028	28	1-5/16"	2-1/4"	100/300
	620032	32	1-9/16"	2-1/2"	100/300
	620036	36	1-13/16"	2-3/4"	50/200
	620040	40	2-1/16"	3"	50/200
	620044	44	2-5/16"	3-1/4"	50/200
	620048	48	2-9/16"	3-1/2"	50/200
	620052	52	2-13/16"	3-3/4"	25/100
	620056	56	3-1/16"	4"	25/100
	620060	60	3-5/16"	4-1/4"	25/100
	620064	64	2-1/2"	4-1/2"	25/100
	620072	72	3"	5"	25/100
	620080	80	3-1/2"	5-1/2"	10/100
	620088	88	4"	6"	10/100
	620096	96	4-1/2"	6-1/2"	10/100
	620104	104	5"	7"	10/100
	620116	116	5-3/4"	7-3/4"	100/100
	620128	128	6-1/2"	8-1/2"	100/100
	620152	152	2"	10"	100/100
	620164	164	1-3/4"	10-3/4"	100/100
	620176	176	9-1/4"	11-1/4"	100/100
	620188	188	9.9"	12-1/4"	100/100
	620200	200	11"	13"	100/100
	620212	212	11-3/4"	13-3/4"	100/100
	620224	224	12-1/2"	14-1/2"	100/100
	620248	248	10-3/4"	16"	100/100
	620270	270	15-3/8"	17-3/8"	100/100
620312	312	18"	20"	100/100	
620332	332	19-1/8"	21-1/4"	100/100	
620390	390	22-7/8"	24-7/8"	100/100	

Features

- 1/2" Wide 301 Stainless Steel Band
- 5/16" Hex Slotted Stainless Steel Screw
- 301 Stainless Steel Housing
- 6mm Thickness

Applications

- Underground
- High Corrosive
- Sure Grip
- Industrial

WARNING: This product can expose you to chemicals, including chromium, which are known to the State of California to cause cancer. For more information, visit www.P65Warnings.ca.gov

CLAMPS & FERRULES

350SS SERIES - MINIATURE WORM GEAR CLAMP



MARINE

SIZE	PART #	DIA. RANGE		BOX/CASE
		MIN.	MAX.	
5/16" Band	350004SS	7/32"	5/8"	200/2400
	350005SS	7/16"	11/16"	200/2400
	350006SS	5/16"	7/8"	200/2400
1/4" Screw	350008SS	7/16"	1"	200/1200
	350010SS	1/2"	1-1/16"	200/1200
	350012SS	9/16"	1-1/4"	200/1200
	350016SS	11/16"	1-1/2"	200/1200
	350020SS	7/8"	1-3/4"	200/1200

Features

- All #316 Stainless Steel for Marine Environments
- 5/16" Wide 316 Stainless Steel Band
- 1/4" Hex Slotted 316 Stainless Steel Screw
- 316 Stainless Steel Housing
- 6mm Thickness
- 8mm Wide
- Mechanically interlocked, 3-piece construction for service sealing pressure without spot welding.

Applications

- Marine
 - Agricultural
 - Automotive
 - Industrial
- Corrosion resistance varies with stainless components.*

620SS SERIES - WORM GEAR BAND CLAMP



MARINE

SIZE	PART #	#	DIA. RANGE		BOX/CASE
			MIN.	MAX.	
1/2" Band 5/16" Screw	620006SS	6	3/8"	7/8"	100/600
	620008SS	8	7/16"	1"	100/600
	620010SS	10	9/16"	1-1/16"	100/600
	620012SS	12	9/16"	1-1/4"	100/600
	620016SS	16	11/16"	1-1/2"	100/600
	620020SS	20	3/4"	1-3/4"	100/300
	620024SS	24	1-1/16"	2"	100/300
	620028SS	28	1-5/16"	2-1/4"	100/300
	620032SS	32	1-9/16"	2-1/2"	100/300
	620036SS	36	1-13/16"	2-3/4"	50/200
	620040SS	40	2-1/16"	3"	50/200
	620044SS	44	2-5/16"	3-1/4"	50/200
	620048SS	48	2-9/16"	3-1/2"	50/200
	620052SS	52	2-13/16"	3-3/4"	25/100
	620056SS	56	3-1/16"	4"	25/100
	620060SS	60	3-5/16"	4-1/4"	25/100
620064SS	64	2-1/2"	4-1/2"	25/100	
620072SS	72	3"	5"	25/100	

Features

- All #316 Stainless Steel for Marine Environments
- 1/2" Wide 316 Stainless Steel Band
- 5/16" Hex Slotted 316 Stainless Steel Screw
- 316 Stainless Steel Housing
- 6mm Thickness
- 12.70mm Wide

Applications

- Marine
- Underground
- High Corrosive

WARNING: This product can expose you to chemicals, including chromium, which are known to the State of California to cause cancer. For more information, visit www.P65Warnings.ca.gov

500 SERIES - QUICK RELEASE CLAMP



SIZE	PART #	#	DIA. RANGE	
			MIN.	MAX.
1/2" Band 5/16" Screw	500012	12	1/2"	1-1/4"
	500088	88	2-1/16"	6"
	500104	104	1-3/4"	7"
	500128	128	1-3/4"	8-9/16"
	500152	152	2"	10"
	500188	188	2-1/16"	12-5/16"
	500216	216	10-3/16"	14"
	500248	248	10-3/4"	16"
500280	280	14-1/4"	18"	

Features

- 1/2" Wide 301 Stainless Steel Band
- 5/16" Hex Slotted Carbon Steel Screw
- 301 Stainless Steel Housing
- 410 Stainless Steel Bridge
- These clamps feature a unique quick release design between the one piece housing and band allowing for quick and easy installation in restricted or difficult areas.

Applications

- Quick release action permits easy installation in applications where clamp must be opened to be applied. Quick release clamps are used extensively in the telecommunications industry on cable enclosures where open air application demands durability.

550 SERIES - QUICK RELEASE CLAMP



SIZE	PART #	#	DIA. RANGE	
			MIN.	MAX.
1/2" Band 5/16" Screw	550012	12	1/2"	1-1/4"
	550020	20	3/4"	1-3/4"
	550028	28	1"	2-1/4"
	550036	36	1"	2-3/4"
	550048	48	1-1/2"	3-1/2"
	550056	56	1"	4"
	550072	72	2"	5"
	550088	88	2-1/16"	6"
	550104	104	1-3/4"	7"
	550128	128	1-3/4"	8-9/16"
	550152	152	2"	10"
	550188	188	2-1/16"	12-5/16"
	550216	216	10-3/16"	14"
	550248	248	10-3/4"	16"
	550280	280	14-1/4"	18"
550312	312	14"	20"	

Features

- 1/2" Wide 301 Stainless Steel Band
- 5/16" Hex Slotted Carbon Steel Screw
- 301 Stainless Steel Housing
- 410 Stainless Steel Bridge
- These clamps feature a unique quick release design between the one piece housing and band allowing for quick and easy installation in restricted or difficult areas.

Applications

- Quick release action permits easy installation in applications where clamp must be opened to be applied. Quick release clamps are used extensively in the telecommunications industry on cable enclosures where open air application demands durability.


WARNING: This product can expose you to chemicals, including chromium, which are known to the State of California to cause cancer. For more information, visit www.P65Warnings.ca.gov

CLAMPS & FERRULES

T-BOLT CLAMP - STAINLESS STEEL



SIZE	PART#	NOMINAL SIZE	O.D. RANGE	
			MIN.	MAX.
3/4" Band 7/16" Screw	840131	1-1/4"	1-5/32"	1-15/32"
	840150	1-1/2"	1-3/8"	1-9/16"
	840175	1-3/4"	1-5/8"	1-13/16"
	840188	1-7/8"	1-3/4"	1-15/16"
	840200	2"	1-7/8"	2-1/16"
	840225	2-1/4"	2-1/8"	2-5/16"
	840238	2-3/8"	2-1/4"	2-7/16"
	840250	2-1/2"	2-3/8"	2-9/16"
	840256	2-9/16"	2-11/32"	2-5/8"
	840263	2-5/8"	2-13/32"	2-11/16"
	840275	2-3/4"	2-17/32"	2-13/16"
	840288	2-7/8"	2-21/32"	2-15/16"
	840300	3"	2-25/32"	3-1/16"
	840312	3-1/8"	2-29/32"	3-3/16"
	840325	3-1/4"	3-1/32"	3-5/16"
	840350	3-1/2"	3-9/32"	3-9/16"
	840375	3-3/4"	3-17/32"	3-13/16"
	840382	3-53/64"	3-19/32"	3-7/8"
	840400	4"	3-25/32"	4-1/16"
	840425	4-1/4"	4-1/32"	4-5/16"
	840450	4-1/2"	4-9/32"	4-9/16"
	840475	4-3/4"	4-17/32"	4-13/16"
	840500	5"	4-25/32"	5-1/16"
	840525	5-1/4"	5-1/32"	5-5/16"
	840550	5-1/2"	5-9/32"	5-9/16"
	840575	5-3/4"	5-17/32"	5-13/16"
	840600	6"	5-25/32"	6-1/16"
	840625	6-1/4"	6-1/32"	6-5/16"
840650	6-1/2"	6-9/32"	6-9/16"	
840675	6-3/4"	6-17/32"	6-13/16"	
840700	7"	6-25/32"	7-1/16"	
840750	7-1/2"	7-9/32"	7-9/16"	
840800	8"	7-25/32"	8-1/16"	
840850	8-1/4"	8-9/32"	8-9/16"	
840888	8-7/8"	8-21/32"	8-15/16"	
8401088	10-7/8"	10-21/32"	10-15/16"	

Features

- 3/4" Wide 301 Stainless Steel Band
- 0.025" Band Thickness
- 304 Stainless Steel Bolt
- 304 Stainless Steel Self-Locking Nut

Specifications/Compliance

- Meets SAE J1508 Specifications
- Torque Rating : 75 in/lb
- For Clamp Sizes 150 - 250:
Opens 1/16" above and tightens 1/8" smaller than nominal I.D. for a total of 3/16" range.
- For Clamp Sizes 256 - 750:
Opens 1/16" above and tightens 7/32" smaller than nominal I.D.

Purpose

- To provide a quick, yet effective means of clamping a variety of fittings to a wide range of hose. T-Bolts can be applied with a standard 7/16" socket wrench. They provide 3600 sealing surface by using a shoe or formed bridge.

Applications

- The T-Bolt clamp is a high strength, reliable clamp with numerous applications in both the commercial and industrial markets including hose and ductwork connections for air, oil, water, other types of low pressure fluid lines, engine air intake, exhaust, hose and filters.

SPRING LOADED T-BOLT CLAMP



SIZE	PART #	SAE #	DIA. RANGE		WEIGHT	BOX QTY
			MIN.	MAX.		
3/4" Band 7/16" Screw	844213	40	2.13"	2.44"	0.170	100
	844225	44	2.25"	2.56"	0.174	100
	844238	48	2.38"	2.69"	0.179	100
	844250	52	2.50"	2.81"	0.181	100
	844263	56	2.63"	2.94"	0.183	100
	844275	60	2.75"	3.06"	0.185	100
	844300	68	3"	3.31"	0.187	100
	844306	70	3.06"	3.38"	0.190	100
	844313	72	3.13"	3.44"	0.192	100
	844325	76	3.25"	3.56"	0.194	100
	844338	80	3.38"	3.69"	0.196	100
	844350	84	3.50"	3.81"	0.196	100
	844356	86	3.56"	3.88"	0.196	100
	844363	88	3.63"	3.94"	0.198	100
	844375	92	3.75"	4.06"	0.198	100
	844406	102	4.06"	4.38"	0.203	100
	844413	104	4.13"	4.44"	0.209	100
	844425	108	4.25"	4.56"	0.214	100
	844456	118	4.56"	4.88"	0.216	100
	844500	132	5"	5.31"	0.218	100
	844525	140	5.25"	5.56"	0.220	100
	844600	164	6"	6.31"	0.223	100
844625	172	6.25"	6.56"	0.225	100	

Features

- 3/4" Wide 300 Stainless Steel Band
- 0.025" Band Thickness
- Carbon Steel with Zinc Plated T-Bolt
- 300 Stainless Steel Housing (Bridge)
- Carbon Steel, Nylon Insert Hex Nut
- Heavy Duty Spring

Specifications/Compliance

- Meets SAE J1508 Type "SLTB" Specifications
- Torque Rating : 150 in/lb

Purpose

- To provide constant tension performance to compensate for the expansion and contraction when temperatures fluctuate. Provides high strength and a 360° seal. Tighten with a 7/16" wrench or hex nutdriver.

Applications

- Designed for use in high vibration and large diameter applications common in heavy trucks, industrial machinery, off road equipment, agricultural irrigation and machinery, for air intake and coolant adapter.
- *Automatically adjust diameter for hose expansion and contraction due to temperature changes.*

⚠ WARNING: This product can expose you to chemicals, including chromium, which are known to the State of California to cause cancer. For more information, visit www.P65Warnings.ca.gov

CONSTANT TORQUE HOSE CLAMP



SIZE	PART #	DIA. RANGE		TORQUE	WEIGHT	BOX QTY
		MIN.	MAX.			
9/16" Band 5/16" Screw	842010	9/16"	1-1/16"	72 in-lb	0.106	100
	842012	11/16"	1-1/4"		0.108	100
	842016	13/16"	1-1/2"		0.112	100
	842020	13/16"	1-3/4"		0.119	100
	842024	1-1/16"	2"		0.121	100
5/8" Band 3/8" Screw	842200	1-1/4"	2-1/8"	130 in-lb High	0.207	100
	842250	1-3/4"	2-5/8"		0.216	100
	842300	2-1/4"	3-1/8"		0.220	100
	842350	2-3/4"	3-5/8"		0.225	100
	842400	3-1/4"	4-1/8"		0.231	100
	842450	3-3/4"	4-5/8"		0.238	100
	842500	4-1/4"	5-1/8"		0.256	100
842550	4-3/4"	5-5/8"	0.284	100		

Features

- 304 Stainless Steel Band
- 0.028" Band Thickness
- 304 Stainless Steel Housing
- 410 Stainless Steel Bridge
- 410 Stainless Steel Hex Screw

Specifications/Compliance

- Meets SAE J1508 Type "SLHD" Specifications
- Torque Rating For 9/16" Band: 72 in/lb
- Torque Rating For 5/8" Band: 130 in/lb

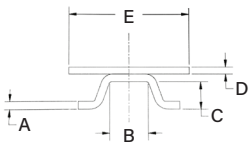
Purpose

- To eliminate leaks by automatically increasing or decreasing the clamps diameter, decreasing the need for retightening. Constant torque clamps have an extended tail on the band to protect soft hose or tube from being cut.

Applications

- Constant torque clamps are an excellent choice for fluctuating and extreme temperature applications and thermal compensation.

V-BAND HOSE CLAMP



PART#	NOMINAL DIAMETER	V-INSERT SECTIONS			BANDS		WGT	BOX QTY
		A	B	C	D	E		
843321	3.21"	0.050	0.262	0.141	0.035	0.750	0.525	100
843382	3.82"	0.077	0.207	0.281	0.040	0.875	0.531	100
843388	3.88"	0.050	0.400	0.281	0.040	0.875	0.536	100
843450	4.50"	0.077	0.207	0.281	0.040	0.875	0.547	100
843461	4.61"	0.050	0.156	0.281	0.035	0.750	0.549	100
843475	4.75"	0.050	0.400	0.281	0.040	0.875	0.553	100
843525	5.25"	0.050	0.262	0.141	0.035	0.750	0.567	100
843588	5.88"	0.050	0.400	0.281	0.040	0.875	0.575	100

Features

- Band Width and Thickness vary by size.
- 300 Stainless Steel Band
- 300 Stainless Steel Trunnion
- 1/4" Wide 300 Stainless Steel Zinc Plated T-Bolt

Purpose

- To provide a fast, secure coupling for connecting flanged joints.

Applications

- V-Band clamps feature high strength and positive sealing integrity for applications including: heavy duty diesel engine exhaust and turbochargers, filter housings, emissions and general industrial applications.

WARNING: This product can expose you to chemicals, including chromium, which are known to the State of California to cause cancer. For more information, visit www.P65Warnings.ca.gov

SADDLE MUFFLER CLAMP



SIZE	PART #	WGT	BOX QTY
1-3/4"	841175	0.335	50
2"	841200	0.410	50
2-1/2"	841250	0.448	50
3"	841300	0.582	50
3-1/2"	841350	0.741	50
4"	841400	0.847	25
4-1/2"	841450	1.023	25
5"	841500	1.067	25

Features

- Carbon Steel Band, Housing, & Bridge
- Zinc Plated for superior corrosion resistance.
- Heavy Duty U-Bolt and Band construction.
- 3/8" U-Bolt
- 2.4mm Base

Applications

- Muffler Clamps are designed with elongated and tapered holes that pulls the legs around the pipe as the nuts tighten, making a tight seal. Other clamps legs do not wrap around the pipe, they stay straight and the clamp only connects at two points.

GUILLOTINE MUFFLER CLAMP



SIZE	PART #	WGT	BOX QTY
4"	841040	0.820	25
4-1/2"	841045	0.847	25
5"	841050	0.988	25

Provides a complete 360° Heavy-Duty Seal

ALUMINIZED STEEL EXHAUST LAP CLAMPS



SIZE	PART #	WGT	BOX QTY
3.50"	846350	1.102	50
4"	846400	1.146	50
5"	846500	1.235	50

- 0.7mm Band Thickness
- 76mm Band Width

Features

- One Metal Band - 76mm Width
- One Spacer
- Two Bolts
- Two Reaction Blocks
- Individually Boxed
- Pre-attached hardware for easy and accurate installation.
- Conforms to pipe and flex tubing to create the best seal available without distorting any pipes.

STAINLESS STEEL EXHAUST LAP CLAMPS



SIZE	PART #	WGT	BOX QTY
2"	847200	0.926	50
2.50"	847250	0.970	50
2.75"	847275	0.992	50
3"	847300	1.014	50
3.50"	847350	1.058	50
4"	847400	1.102	50
5"	847500	1.190	50
6"	847600	1.279	50

- 0.5mm Band Thickness
- 76mm Band Width

Features

- One Metal Band - 76mm Width
- One Spacer
- Two Bolts
- Two Reaction Blocks
- Individually Boxed
- Pre-attached hardware for easy and accurate installation.
- Conforms to pipe and flex tubing to create the best seal available without distorting any pipes.

STAINLESS STEEL EXHAUST EASY-FORM CLAMPS



SIZE	PART #	WGT	BOX QTY
5"	848500	1.190	50

- 0.5mm Band Thickness
- 76mm Band Width

Features

- One Metal Band - 76mm Width
- One Spacer
- Two Bolts
- Two Reaction Blocks
- Individually Boxed
- Pre-attached hardware for easy and accurate installation.
- Conforms to pipe and flex tubing to create the best seal available without distorting any pipes.

⚠ WARNING: This product can expose you to chemicals, including chromium, which are known to the State of California to cause cancer. For more information, visit www.P65Warnings.ca.gov

R88 SERIES - DOUBLE BOLT CLAMP



SIZE	PART #	DIA. RANGE		MAX TORQUE FT LBS
		MIN.	MAX.	
1-1/8"	R88DB-12-DP*	1-1/8"	1-1/4"	15
1-3/8"	R88DB-16-DP*	1-3/8"	1-1/2"	20
1-5/8"	R88DB-20-DP*	1-5/8"	1-3/4"	25
2"	R88DB-24-DP*	2"	2-1/8"	25
2-1/4"	R88DB-32-DP*	2-1/4"	2-3/8"	30

Features

- Rugged, Heavy-Duty Two Bolt Clamps WITHOUT Saddles
- Zinc Plated Duction Iron Clamp
- Zinc Plated Carbon Steel Bolt & Nuts

SC SPIRAL SERIES - DOUBLE BOLT CLAMP



SIZE	RIGHT HAND SPIRAL	LEFT HAND SPIRAL	O.D. RANGE (mm)	
	PART #	PART #	MIN.	MAX.
2"	SC-200R-SP*	SC-200L-SP	51	56
3"	SC-300R-SP*	SC-300L-SP	76	90
4"	SC-400R-SP*	SC-400L-SP	106	118
6"	SC-600R-SP*	SC-600L-SP	151	170

Features

- Spiral Wound Clamps
- Available in left hand (counter clockwise) and right hand (clockwise) spirals.
- Zinc Plated Steel Construction

Applications

- Designed for use on heavily corrugated suction hoses.

DBC SERIES - DOUBLE BOLT CLAMP



IMPORT



SIZE	PART #	DIA. RANGE		MAX TORQUE FT LBS
		MIN.	MAX.	
3-1/2"	DBC-400-DP*	3-1/2"	4"	40
4-3/16"	DBC-525-DP*	4-3/16"	5"	60
6-1/8"	DBC-675-DP*	6-1/8"	6-7/8"	60
8-1/4"	DBC-875-DP*	8-1/4"	8-7/8"	125
8-15/16"	DBC-988-DP*	8-15/16"	9-7/8"	125
11-3/16"	DBC-1275-DP*	11-3/16"	13"	125
12-3/16"	DBC-1360-DP	12-3/16"	14"	200

Features

- Rugged, Heavy-Duty Two Bolt Clamps WITH Saddles
- Zinc Plated Duction Iron Clamps & Saddles
- Zinc Plated Carbon Steel Bolt & Nuts

MEGAKLAMP SERIES - MEGA CLAMP



IMPORT

SIZE (mm)	PART #	DIA. RANGE (inch)		WIDTH IN.
		MIN.	MAX.	
17-19	MKL-019-SP	0.67	0.75	1.02"
20-22	MKL-022-SP	0.79	0.87	1.02"
23-25	MKL-025-SP	0.87	0.98	1.02"
26-28	MKL-028-SP	1.02	1.10	1.02"
29-31	MKL-031-SP	1.14	1.22	1.02"
32-35	MKL-035-SP	1.26	1.38	1.02"
36-39	MKL-039-SP	1.42	1.54	1.02"
40-43	MKL-043-SP	1.57	1.69	0.87"
44-47	MKL-047-SP	1.73	1.85	0.87"
48-51	MKL-051-SP	1.89	2.01	0.87"
52-55	MKL-055-SP	2.05	2.17	0.87"
56-59	MKL-059-SP	2.20	2.32	0.87"
60-63	MKL-063-SP	2.36	2.48	0.87"
64-67	MKL-067-SP	2.52	2.64	0.94"
68-73	MKL-073-SP	2.68	2.87	0.94"
74-79	MKL-079-SP	2.91	3.11	0.94"
80-85	MKL-085-SP	3.15	3.35	0.94"

Features

- Yellow Zinc Plated Steel Band, Bridge, Trunnion, Sleeve, & Bolt
- Band Gauge from 0.6mm to 1.7mm depending on clamp size.
- Band Width from 18mm to 26mm depending on clamp size.
- Bolt Size from 5mm to 10mm depending on clamp size.

Applications

- Rugged heavy duty wide band clamps for use in medium duty air and water, general industrial, automotive, food and agricultural applications.

WARNING: This product can expose you to chemicals, including chromium, which are known to the State of California to cause cancer. For more information, visit www.P65Warnings.ca.gov

CLAMPS & FERRULES

M6 MAXICLAMP SERIES - LIGHT MEGA CLAMP



IMPORT

SIZE (mm)	PART #	DIA. RANGE (inch)		WIDTH IN.
		MIN.	MAX.	
23-25	M6-23	0.87	1.01	0.71"
26-28	M6-26	1.02	1.13	0.71"
29-31	M6-29	1.14	1.25	0.79"
32-35	M6-32	1.26	1.41	0.79"

Features

- Silver (clear) Zinc Plated Steel Band, Bridge, Trunnion, Sleeve, & Bolt
- Band Gauge from 0.6mm to 0.8mm depending on clamp size.
- Band Width from 18mm to 20mm depending on clamp size.
- Bolt Size from 5mm to 6mm depending on clamp size.

M6 MAXICLAMP SERIES - STAINLESS STEEL LIGHT MEGA CLAMP



IMPORT

SIZE (mm)	PART #	DIA. RANGE (inch)		WIDTH IN.
		MIN.	MAX.	
23-25	M6S-23	0.87	1.01	0.71"
29-31	M6S-29	1.14	1.25	0.79"
32-35	M6S-32	1.26	1.41	0.79"
36-39	M6S-36	1.42	1.56	0.79"
40-43	M6S-40	1.57	1.72	0.79"

M8 MAXICLAMP SERIES - MEGA CLAMP



IMPORT

SIZE (mm)	PART #	DIA. RANGE (inch)		WIDTH IN.
		MIN.	MAX.	
52-55	M8-52	2.05	2.17	0.87"
56-59	M8-56	2.20	2.35	0.87"
60-63	M8-60	2.36	2.51	0.87"
64-67	M8-64	2.52	2.67	0.87"
74-79	M8-74	2.91	3.14	0.94"
80-85	M8-80	3.15	3.38	0.94"
86-91	M8-86	3.39	3.61	0.94"
98-103	M8-98	3.86	4.08	0.94"
104-112	M8-104	4.09	4.44	0.94"
113-121	M8-113	4.45	4.79	0.94"

Features

- Silver (clear) Zinc Plated Steel Band, Bridge, Trunnion, & Sleeve
- 8mm Silver Zinc Plated Bolt
- Band Gauge from 1.2mm to 1.5mm depending on clamp size.
- Band Width from 22mm to 24mm depending on clamp size.

M8S MAXICLAMP SERIES - MEGA CLAMP



IMPORT

SIZE (mm)	PART #	DIA. RANGE (inch)		WIDTH IN.
		MIN.	MAX.	
44-47	M8S-44	1.73	1.88	0.87"
48-51	M8S-48	1.89	2.04	0.87"
52-55	M8S-52	2.05	2.17	0.87"
56-59	M8S-56	2.20	2.35	0.87"
60-63	M8S-60	2.36	2.51	0.87"
64-67	M8S-64	2.52	2.67	0.87"
68-73	M8S-68	2.68	2.90	0.94"
74-79	M8S-74	2.91	3.14	0.94"
80-85	M8S-80	3.15	3.38	0.94"
86-91	M8S-86	3.39	3.61	0.94"
92-97	M8S-92	3.62	3.85	0.94"
98-103	M8S-98	3.86	4.08	0.94"
104-112	M8S-104	4.09	4.44	0.94"
113-121	M8S-113	4.45	4.79	0.94"
122-130	M8S-122	4.80	5.15	0.94"
131-139	M8S-131	5.16	5.50	1.02"
149-161	M8S-149	5.87	6.37	1.02"

Features

- 301 Stainless Steel Band, Bridge, Trunnion, & Sleeve
- 8mm A2-70 Stainless Steel Bolt
- Band Gauge 0.8mm
- Band Width from 22mm to 24mm depending on clamp size.

M10 MAXICLAMP SERIES - HEAVY MEGA CLAMP



IMPORT

SIZE (mm)	PART #	DIA. RANGE (inch)		WIDTH IN.
		MIN.	MAX.	
149-161	M10-149	5.87	6.37	1.02"
188-200	M10-188	7.40	7.86	1.02"
201-213	M10-201	7.91	8.42	1.02"
227-239	M10-227	8.94	9.44	1.02"
240-252	M10-240	9.45	9.92	1.02"

Features

- 301 Stainless Steel Band, Bridge, Trunnion, & Sleeve
- 10mm A2-70 Stainless Steel Bolt
- Band Gauge 1.7mm
- Band Width 26mm

WARNING: This product can expose you to chemicals, including chromium, which are known to the State of California to cause cancer. For more information, visit www.P65Warnings.ca.gov

GAPLESS EAR CLAMP



NOMINAL SIZE	PART #	BAND WIDTH	DIA. RANGE (inch)	
			CLOSED	OPEN
9/32"	16700001	5mm	0.228	0.276
3/8"	16700004	5mm	0.307	0.374
7/16"	16700007	5mm	0.378	0.445
1/2"	16700010	7mm	0.425	0.524
35/64"	16700012	7mm	0.453	0.551
9/16"	16700013	7mm	0.472	0.571
5/8"	16700016	7mm	0.520	0.618
11/16"	16700017	7mm	0.571	0.669
3/4"	16700022	7mm	0.654	0.780
13/16"	16700024	7mm	0.701	0.827

Features

- Assured Clamping Seal
- Stainless Steel Tubing
- No Steps or Gaps Inside Clamp
- 100 Per Bag Quantity

Specifications/Compliance

- One installed, smooth inner band circumference prevents damage to the hose while the unique tongue-in-groove design provides a 360° seal.
- Stainless Steel Tubing UNS S30400 or DIN 1.4301

Applications

- Gapless Ear Clamps are especially suited for low durometer and/or thin-walled hose and tubing.
- Perfect for silicon, vinyl, polyurethane, or other high tech materials used in all industries.

CARBON STEEL 1-EAR CLAMPS



NOMINAL SIZE	PART #	REF#	DIA. RANGE (inch)	
			CLOSED	OPEN
3/8"	1050000	105	0.350	0.414
7/16"	1050001	113	0.381	0.444
15/32"	1050002	123	0.394	0.486
1/2"	1050003	133	0.453	0.524
35/64"	1050006	140	0.472	0.551
9/16"	1050007	145	0.496	0.571
5/8"	1050008	157	0.543	0.618
11/16"	1050009	170	0.594	0.669
23/32"	1050010	185	0.618	0.728
3/4"	1050011	198	0.669	0.779
13/16"	1050012	210	0.716	0.827
7/8"	1050013	226	0.779	0.890
15/16"	1050014	241	0.839	0.949
1"	1050015	256	0.898	1.008
1-1/16"	1050016	271	0.945	1.067
1-1/8"	1050017	286	1.004	1.126
1-3/16"	1050018	301	1.063	1.185
1-5/16"	1050020	331	1.181	1.303
1-3/8"	1050021	346	1.240	1.362
1-15/32"	1050023	376	1.358	1.480
1-9/16"	1050025	396	1.437	1.559
1-5/8"	1050026	410	1.492	1.614
1-3/4"	1050029	455	1.669	1.791
1-16/16"	1050030	470	1.728	1.850
1-15/16"	1050032	500	1.846	1.968
2"	1050033	515	1.905	2.028

Features

- Hot Dipped Galvanized Carbon Steel Band - G90
- 100 Per Bag Quantity

Specifications/Compliance

- As a guideline, 1-Ear Clamps have held 30 bar - 441 psi.
This was done using a static water pressure test.

Applications

- 1-Ear Clamps are intended for low pressure applications such as automotive (not fuel lines), appliances, industrial machinery, underground irrigation systems and beverage dispensing equipment. They are specifically designed for mass production applications where inexpensive clamps are needed.

WARNING: This product can expose you to chemicals, including chromium, which are known to the State of California to cause cancer. For more information, visit www.P65Warnings.ca.gov

CLAMPS & FERRULES

ZINC PLATED CARBON STEEL 2-EAR CLAMP



NOMINAL SIZE	PART #	DIA. RANGE (inch)	
		CLOSED	OPEN
3/16"	1010002	0.134	0.197
5/16"	1010008	0.276	0.354
3/8"	1010011	0.319	0.433
1/2"	1010016	0.425	0.512
9/16"	1010019	0.492	0.591
19/32"	1010022	0.551	0.669
5/8"	1010024	0.591	0.709
3/4"	1010027	0.638	0.787

Features

- Zinc Plated Carbon Steel Band
- Stainless Steel Tubing
- 100 Per Bag Quantity

Specifications/Compliance

- As a guideline, 2-Ear Clamps successfully seal at 54 bar - 800 psi with 35 pulsating strokes a minute.
- Zinc Plated Carbon Steel Band SAE 1008/1010 or DIN 1.0338
- Stainless Steel Tubing UNS S30400 or DIN 1.4301

STAINLESS STEEL 2-EAR CLAMP



NOMINAL SIZE	PART #	DIA. RANGE (inch)	
		CLOSED	OPEN
1/4"	1510003	0.197	0.276
5/16"	1510004	0.276	0.354
3/8"	1510023	0.319	0.433
1/2"	1510006	0.425	0.512
9/16"	1510007	0.492	0.591
19/32"	1510008	0.551	0.669
5/8"	1510009	0.591	0.709
3/4"	1510010	0.638	0.787
13/16"	1510011	0.709	0.866
7/8"	1510012	0.748	0.906
15/16"	1510013	0.827	0.984
1"	1510014	0.886	1.063
1-1/8"	1510016	1.035	1.221
1-9/16"	1510019	1.260	1.457
1-1/2"	1510020	1.378	1.575

Minimum QTYs may apply

Applications

- 2-Ear Clamps are especially suited for industrial use and with heavily vibrating equipment.
- This is a medium pressure clamp and is widely used for maintenance and OEM applications. Rubber hose, plastic tubing, coaxial and electrical cable, rope, etc. are all easily clamped. These clamps are installed on air, fluid, gas and steam lines. The one piece design offers a positive, tamper-proof seal without damaging the hose.

Note: When ordering your 2-Ear Clamps select nominal clamp size nearest to, but always larger than, O.D. of material to be clamped after insert has been fitted.

⚠ WARNING: This product can expose you to chemicals, including chromium, which are known to the State of California to cause cancer. For more information, visit www.P65Warnings.ca.gov

WHITE ZINC PLATED CARBON STEEL 2-EAR CIRCLE CLAMP



SIZE	PART #	DIA. RANGE (inch)	
		CLOSED	OPEN
1/2"	CC-1113	0.433	0.512
9/16"	CC-1315	0.512	0.591
19/32"	CC-1517	0.591	0.669
5/8"	CC-1518	0.591	0.709
3/4"	CC-1720	0.669	0.787
7/8"	CC-2023	0.787	0.906
15/16"	CC-2225	0.866	0.984
1"	CC-2327	0.906	1.063
1-1/16"	CC-2528	0.984	1.102
1-1/8"	CC-2731	1.063	1.220
1-5/16"	CC-3134	1.220	1.339
1-1/2"	CC-3740	1.457	1.575

Features

- White Zinc Plated Carbon Steel Band
- Robust, durable one-piece design offers positive, tamper resistant seal for air and fluid media lines smooth edges prevent damage to hose designed for one time use only.

NEW PRODUCT LINE

STAINLESS STEEL TWIN-LOK BAND CLAMP



SIZE	PART #	BAND WIDTH	THICKNESS
2"	838008	5/8	0.030
2-3/4"	838011	5/8	0.030
3"	838012	5/8	0.030
3-1/2"	838014	5/8	0.030
4"	838016	5/8	0.030
4-1/2"	838018	5/8	0.030
5"	838020	5/8	0.030
6"	838024	5/8	0.030
6-1/2"	838026	5/8	0.030
7"	838028	5/8	0.030
8"	838032	5/8	0.030
9"	838036	5/8	0.030
10"	838037	5/8	0.030

Features

- 304 Stainless Steel Construction
- Twin-Lok clamp security using the punch and/or fold-up methods.
- Heavy-duty buckle with extra locking crimp for increased holding power.
- Double-wrapped metal band.

HAMMERLOCK CPHL SERIES CLAMP



IMPORT



SIZE	PART #	WIDTH
1-3/16"	CPHL-03	3/8"
1"	CPHL-04	5/8"
1-1/4"	CPHL-05	5/8"
1-1/2"	CPHL-06	5/8"
1-3/4"	CPHL-07	5/8"
2"	CPHL-08	5/8"
2-1/4"	CPHL-09	5/8"
2-1/2"	CPHL-10	5/8"
2-3/4"	CPHL-11	5/8"
3"	CPHL-12	5/8"
3-1/2"	CPHL-14	5/8"
4"	CPHL-16	5/8"
4-1/2"	CPHL-18	5/8"
5"	CPHL-20	5/8"

Features

- Double wrapped galvanized steel band performed to a given diameter and ready for application.

HAMMERLOCK CPHLS SERIES CLAMP



IMPORT



SIZE	PART #	WIDTH
1"	CPHLS-04	5/8"
1-1/4"	CPHLS-05	5/8"
1-1/2"	CPHLS-06	5/8"
1-3/4"	CPHLS-07	5/8"
2"	CPHLS-08	5/8"
2-1/4"	CPHLS-09	5/8"
2-1/2"	CPHLS-10	5/8"
2-3/4"	CPHLS-11	5/8"
3"	CPHLS-12	5/8"
3-1/2"	CPHLS-14	5/8"
4"	CPHLS-16	5/8"
4-1/2"	CPHLS-18	5/8"
5"	CPHLS-20	5/8"
6"	CPHLS-24	5/8"
7"	CPHLS-28	5/8"
8"	CPHLS-32	5/8"

Features

- Double wrapped stainless steel band performed to a given diameter and ready for application.
- Stainless Steel lok for strength.

WARNING: This product can expose you to chemicals, including chromium, which are known to the State of California to cause cancer. For more information, visit www.P65Warnings.ca.gov

GALVANIZED PREFORMED CLAMP



SIZE	PART #	BAND WIDTH	THICKNESS	BOX QTY.
13/16"	F3	3/8	0.025	100
1-3/8"	F311	3/8	0.025	100
1"	F4	5/8	0.025	100
1-1/4"	F5	5/8	0.025	100
1-1/2"	F6	5/8	0.031	100
1-3/4"	F7	5/8	0.031	100
2"	F8	5/8	0.031	100
2-1/4"	F9	5/8	0.031	100

GALVANIZED PREFORMED CLAMP WITH STAINLESS STEEL LOK



SIZE	PART #	BAND WIDTH	THICKNESS	BOX QTY.
2-1/2"	F10	5/8	0.031	50
2-3/4"	F11	5/8	0.031	50
3"	F12	5/8	0.031	50
3-1/2"	F14	5/8	0.031	50
4"	F16	5/8	0.031	25
4-1/2"	F18	5/8	0.031	25
5"	F20	5/8	0.031	25

STAINLESS STEEL PREFORMED CLAMP



SIZE	PART #	BAND WIDTH	THICKNESS	BOX QTY.
1"	FS4	5/8	0.022	100
1-1/4"	FS5	5/8	0.022	100
1-1/2"	FS6	5/8	0.022	100
1-3/4"	FS7	5/8	0.022	100
2"	FS8	5/8	0.022	100
2-1/4"	FS9	5/8	0.022	100

STAINLESS STEEL PREFORMED CLAMP WITH STAINLESS STEEL LOK



SIZE	PART #	BAND WIDTH	THICKNESS	BOX QTY.
2-1/2"	FS10	5/8	0.022	50
2-3/4"	FS11	5/8	0.022	50
3"	FS12	5/8	0.022	50
3-1/2"	FS14	5/8	0.022	50
4"	FS16	5/8	0.022	25
4-1/2"	FS18	5/8	0.022	25
5"	FS20	5/8	0.022	25
6"	FS24	5/8	0.022	25
7"	FS28	5/8	0.022	25

Features

- Double-Wrapped & Triple-Punched to hold permanently. **Fig 1**
- Galvanized & Stainless Steel Preformed Clamps above 2-1/2" in I.D. have a Stainless Steel lock for greater strength and rigidity.



Fig 1

Applications

- Preformed Clamps are double wrapped and formed to a given diameter. Used primarily where one end of the hose or article is free to allow the clamps to be slid over the hose end before the fitting is inserted. All clamps may be pulled down to a smaller diameter but cannot be adjusted to a larger diameter.

Note: To order the correct size Fast Lok Clamps, measure the outside diameter of the hose or article and then select the next larger inside diameter clamp by catalog number.

GALVANIZED K-SERIES PREFORMED CLAMP



SIZE	PART #	BAND WIDTH	THICKNESS	BOX QTY.
13/16"	K3	3/8	0.025	100
1-3/8"	K311	3/8	0.025	100
1"	K4	5/8	0.030	100
1-1/4"	K5	5/8	0.030	100
1-1/2"	K6	5/8	0.030	100
1-3/4"	K7	5/8	0.030	100
2"	K8	5/8	0.030	100
2-1/4"	K9	5/8	0.030	100
2-1/2"	K10	5/8	0.030	50
2-3/4"	K11	5/8	0.030	50
3"	K12	5/8	0.030	50
3-1/2"	K14	5/8	0.030	50
4"	K16	5/8	0.030	25
4-1/2"	K18	5/8	0.030	25
5"	K20	5/8	0.030	25
6"	K24	5/8	0.030	25
7"	K28	5/8	0.030	25

STAINLESS STEEL K-SERIES PREFORMED CLAMP



SIZE	PART #	BAND WIDTH	THICKNESS	BOX QTY.
13/16"	KS3	3/8	0.025	100
1-3/8"	KS311	3/8	0.025	100
1"	KS4	5/8	0.030	100
1-1/4"	KS5	5/8	0.030	100
1-1/2"	KS6	5/8	0.030	100
1-3/4"	KS7	5/8	0.030	100
2"	KS8	5/8	0.030	100
2-1/4"	KS9	5/8	0.030	100
2-1/2"	KS10	5/8	0.030	50
2-3/4"	KS11	5/8	0.030	50
3"	KS12	5/8	0.030	50
3-1/2"	KS14	5/8	0.030	50
4"	KS16	5/8	0.030	25
4-1/2"	KS18	5/8	0.030	25
5"	KS20	5/8	0.030	25

Features

- K-Clamps may be secured by either a punch or fold-up method.
- Center Punched method for lessened tension loss. Patented hole in band gives better internal mechanical locking after punching. **Fig 1**
- Fold-Up Method **Fig 2**
- Heavy Duty Lock for greater strength and rigidity.

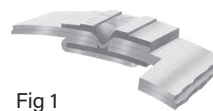


Fig 1

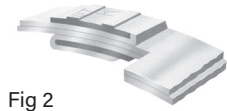


Fig 2

Applications

- Each clamp is a double wrapped metal band formed to a given diameter. The clamp is designed to be slid over the hose end before the fitting is inserted. A punch-type or fold-up tool is then used to apply the clamp.

Note: To order the correct size Fast Lok Clamps, measure the outside diameter of the hose or article and then select the next larger inside diameter clamp by catalog number.

⚠ WARNING: This product can expose you to chemicals, including chromium, which are known to the State of California to cause cancer. For more information, visit www.P65Warnings.ca.gov

CLAMPS & FERRULES

STANDARD JAW PINCERS



PART #	DESCRIPTION
1410118	Model 10981

LOKING TOOL



PART #
F38

Portable hand tool used to apply punch
Type 3/8 & 5/8 Clamps

BUCHANAN TYPE



SIDE JAW PINCERS



PART #	DESCRIPTION
1410083	Model 10991

This dual purpose, side jaw design allows clamps to be applied or removed in confined areas with pincers held parallel to the hose. Also used like standard Pincers.

DOMESTIC

LOKING TOOL



PART #
F40

Used to apply Punch Type 3/8 & 5/8 clamps.
Order mallet separately.

TPT TOOLS AND PARTS



PART #
TPT-1

LOKING TOOL



PART #
F100

Used to apply Punch Type 3/8 & 5/8 clamps.
Order mallet separately.

HOSE CRIMPER



PART #	DESCRIPTION
308070	Hose Crimper

HOSE CRIMPER COMES WITH 5 DIES
Die Sizes = 5/8", 37/64", 12/32", 31/64", 11/16"

LOKING TOOL HD



PART #	DESCRIPTION
P1	Heavy Duty
P300	Imported

⚠️ WARNING: This product can expose you to chemicals, including chromium, which are known to the State of California to cause cancer. For more information, visit www.P65Warnings.ca.gov

ALUZINC EMBOSSED WORM-GEAR HOSE CLAMP



PART # ALUZINC	SAE SIZE	CLAMPING RANGE		BAG QTY.
		INCHES	MM	
88024	8	5/8" - 1"	15-24	1000
88028	10	3/4" - 1-1/8"	19-28	500
88032	12	7/8" - 1-1/4"	22-32	500
88038	16	1-1/16" - 1-1/2"	26-38	500
88050	24	1-1/2" - 2"	38-50	500
88056	28	1-3/4" - 2-1/4"	44-56	500
88065	32	2" - 2-9/16"	50-65	200
88075	40	2-5/16" - 3"	58-75	200
88085	44	2-11/16" - 3-3/8"	68-85	200
88095	52	3" - 3-3/4"	77-95	200
88112	64	3-7/16" - 4-7/16"	87-112	200

Features

- Unique one-piece Housing
- Rolled up Band Edges
- Non-Perforated (embossed) band for hose protection.
- High clamping force and High durability torque.

Specifications/Compliance

- Aluzinc band 12mm, for added corrosion resistance to give 3x the protection offered by conventional galvanized steel.
- Stainless: All parts in AISI 304 Stainless Steel
- Per SAE standard J1508 Type "FEO"

Applications

- A non-perforated band with rolled up edges eliminates hose damage while increasing clamping force.

STAINLESS STEEL EMBOSSED WORM-GEAR HOSE CLAMP



PART # 304 SS	SAE SIZE	CLAMPING RANGE		BAG QTY.
		INCHES	MM	
89024	8	5/8" - 1"	15-24	1000
89028	10	3/4" - 1-1/8"	19-28	500
89032	12	7/8" - 1-1/4"	22-32	500
89038	16	1-1/16" - 1-1/2"	26-38	500
89044	20	1-1/4" - 1-3/4"	32-44	500
89050	24	1-1/2" - 2"	38-50	500
89056	28	1-3/4" - 2-1/4"	44-56	500
89065	32	2" - 2-9/16"	50-65	200
89075	40	2-5/16" - 3"	58-75	200
89085	44	2-11/16" - 3-3/8"	68-85	200
89095	52	3" - 3-3/4"	77-95	200
89112	64	3-7/16" - 4-7/16"	87-112	200

- Minimum Qty may apply

PAINTED ALUZINC STANDARD MINI CLAMP



PART # ALUZINC	CLAMPING RANGE		BAG QTY.
	INCHES	MM	
92010	0.36 - 0.41	9 - 10.5	1000
92011	0.37 - 0.45	9.5 - 11.5	900
92012	0.41 - 0.49	10.5 - 12.5	800
92013	0.45 - 0.53	11.5 - 13.5	800
92014	0.49 - 0.57	12.5 - 14.5	700
92015	0.53 - 0.61	13.5 - 15.5	600
92016	0.55 - 0.65	14 - 16.5	500
92017	0.59 - 0.69	15 - 17.5	500

Features/Applications

- Bandwidth is 9mm.
- Sure seal for small, thin walled hoses.
- The nut is secured to the clamp, making installation easier and the hexagonal head can be tightened with a socket wrench or screw driver.

304 STAINLESS STEEL MINI CLAMP



PART # 304 SS	CLAMPING RANGE		BAG QTY.
	INCHES	MM	
93008	0.30 - 0.34	7.5 - 8.5	1000
93009	0.34 - 0.37	8.5 - 9.5	1000
93011	0.41 - 0.47	10.5 - 12	900
93013	0.49 - 0.55	12.5 - 14	800
93017	0.63 - 0.71	16 - 18	500

WARNING: This product can expose you to chemicals, including chromium, which are known to the State of California to cause cancer. For more information, visit www.P65Warnings.ca.gov

STAINLESS STEEL EMBOSSED NON-PERFORATED WORM GEAR CLAMP



MARINE

PART #	CLAMPING RANGE	
	IN.	MM
96027	0.625" - 1.06"	16 - 27
96032	0.787" - 1.26"	20 - 32
96040	0.984" - 1.575"	25 - 40
96050	1.26" - 1.969"	35 - 50
96060	1.575" - 2.362"	40 - 60
96070	1.969" - 2.756"	50 - 70
96080	2.362" - 3.15"	60 - 80

Features

- 12mm Band Width
- Band edges rolled to protect soft hoses from shearing and fraying.
- #316 Stainless Steel Material

Specifications/Compliance

- Meets the DIN 3017 Standard
- Installation Torque 60 lbs

Applications

- General purpose non perforated band especially suited for most hoses and soft silicone hoses.
- Common applications include: automobile, industrial, mechanical engineering, plumbing, and marine.
- Replaces the Ultra Clamps 316 Stainless Steel.
- Preferred clamp for the Marine Market.

ULTRA STAINLESS STEEL EMBOSSED NON-PERFORATED WORM GEAR CLAMP



MARINE

PART #	SAE SIZE	CLAMPING RANGE	
		IN.	MM
90020	6	1/2" - 13/16"	13 - 20
90024	8	5/8" - 1"	15 - 24
90028	10	3/4" - 1-1/8"	19 - 28
90032	12	7/8" - 1-1/4"	22 - 32
90038	16	1-1/16" - 1-1/2"	26 - 38
90044	20	1-1/4" - 1-3/4"	32 - 44
90050	24	1-1/2" - 2"	38 - 50
90056	28	1-1/4" - 2-1/4"	38 - 57
90065	32	1-1/2" - 2-1/2"	38 - 64
90075	40	2" - 3"	51 - 76
90085	44	2-1/4" - 3-1/4"	57 - 83
90095	52	2-3/4" - 3-3/4"	70 - 95
90112	64	3-1/2" - 4-1/2"	89 - 114
90138	80	4" - 5-1/2"	102 - 140
90165	96	5" - 6-1/2"	127 - 165
90180	104	5-1/2" - 7"	140 - 178
90205	120	6-1/2" - 8"	165 - 203
90231	138	7-5/8" - 9-1/8"	194 - 232
90256	154	8-5/8" - 10-1/8"	219 - 257
90282	170	9-5/8" - 11-1/8"	244 - 283
90307	186	10-5/8" - 12-1/8"	270 - 308

Features

- 12mm Band Width
- Band edges rolled to protect soft hoses from shearing and fraying.
- Ultra Stainless Steel Material

Specifications/Compliance

- All parts made of AISI 316 Stainless Steel
- Per SAE Standard J1508 Type "FEO"

Applications

- General purpose non perforated band especially suited for most hoses and soft silicone hoses.
- Common applications include: automobile, industrial, mechanical engineering, plumbing, and marine.
- Made of AISI 316 high tensile strength stainless steel, the ULTRA has one of the highest clamping force ratings of all worm-gear style clamps due to the final thread pitch and riveted housing.
- Preferred 316 Stainless Steel Embossed Clamp for the Marine Market.

 **WARNING:** This product can expose you to chemicals, including chromium, which are known to the State of California to cause cancer. For more information, visit www.P65Warnings.ca.gov

CLAMPS & FERRULES

ALUZINC RUBBER LINED CLAMPS


PART # ALUZINC	CLAMPING RANGE		BAG QTY.
	IN.	MM	
95300	1/8"	3	100
95301	3/16"	5	100
95302	1/4"	6	100
95303	5/16"	8	100
95304	3/8"	10	100
95305	7/16"	11	100
95306	1/2"	13	100
95307	9/16"	14	100
95308	5/8"	16	100
95309	11/16"	18	50
95310	3/4"	19	50
95311	13/16"	21	50
95312	7/8"	22	50
95313	15/16"	24	50
95314	1"	25	50
95315	1-1/16"	27	50
95316	1-1/8"	29	50
95317	1-3/16"	30	50
95318	1-1/4"	32	50
95319	1-5/16"	33	50
95320	1-3/8"	35	50
95321	1-7/16"	36	50
95322	1-1/2"	38	500
95326	1-5/8"	41	50
95323	1-3/4"	45	25
95328	1-7/8"	47	25
95324	2"	51	25
95325	2-1/8"	54	25
95329	2-3/8"	60	25
95327	2-1/2"	65	25
95330	2-15/16"	74	15
95331	4-5/16"	110	10

STAINLESS STEEL RUBBER LINED CLAMPS

PART# 304 SS	CLAMPING RANGE		BAG QTY.
	IN.	MM	
96301	3/16"	5	1000
96302	1/4"	6	200
96303	5/16"	8	1000
96304	3/8"	10	100
96305	7/16"	11	1000
96306	1/2"	13	100
96307	9/16"	14	100
96308	5/8"	16	100
96310	3/4"	19	500
96312	7/8"	22	500
96314	1"	25	500
96316	1-1/8"	29	500
96318	1-1/4"	32	500
96320	1-3/8"	35	500
96322	1-1/2"	38	100
96323	1-3/4"	45	500

Features

- Bandwidths and mounting hose sizes vary by diameter and material.
- Aluzinc clamps have a 0.26" hole diameter
- Stainless Steel 0.20" diameter
- The rubber cushion absorbs vibration, provides protection against scratching and is made of black EPDM type rubber.

Applications

- Rubber cushion clamps are used in a variety of industries and applications including automotive, truck, hydraulics and pneumatics, ship building, refrigeration, large equipment packaging etc.
- Application uses for holding cable, wire, pipe, and hose.

ZINC PLATED STEEL RUBBER CUSHIONED CLAMP


PART #	MOUNTING DIA.	CLAMP DIA.
95402	3/8"	1/4"
95404	3/8"	3/8"
95406	3/8"	1/2"
95408	3/8"	5/8"
95410	3/8"	3/4"
95414	3/8"	1"
95418	3/8"	1 1/4"
95422	3/8"	1 1/2"
95424	3/8"	2"
95427	3/8"	2 1/2"
95432	3/8"	3"
95433	3/8"	4"
95434	3/8"	5"

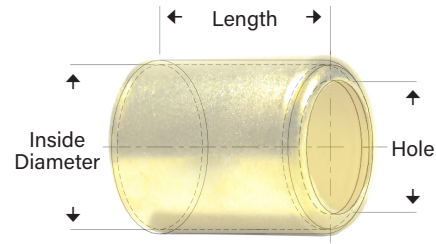
GALVANIZED STEEL VINYL COATED CLAMP


PART #	MOUNTING DIA.	CLAMP DIA.
95504	1/4"	3/8"
95506	1/4"	1/2"
95508	1/4"	5/8"
95510	1/4"	3/4"
95512	1/4"	7/8"
95514	1/4"	1"
95516	1/4"	1 1/8"
95518	1/4"	1 1/4"
95522	1/4"	1 1/2"
95523	1/4"	1 3/4"
95524	1/4"	2"

WARNING: This product can expose you to chemicals, including chromium, which are known to the State of California to cause cancer. For more information, visit www.P65Warnings.ca.gov

EXPANDED PRODUCT LINE

BRASS HOSE FERRULES



Features

- Brass Hose Ferrules offer an alternative to hose clamps. After crimping, the ferrule will provide a permanent clamping force on both the hose and fitting.
- Corrosion-resistant Brass material ensures ferrules are suitable for water & mild chemicals.

Specifications

- Material: 268 Brass Alloy
- Hardness: 20-45 Rockwell Scale

Applications

- Commonly used in plumbing systems to connect pipes, hoses, and fixtures.

General Recommendations for Ferrules

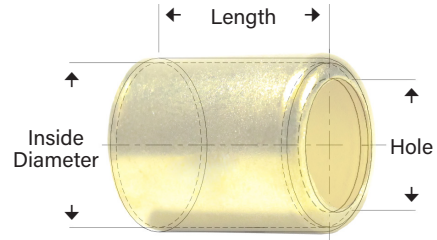
- Insert the hose barb into the hose and measure the hose O.D. (outside diameter) over the inserted hose barb, then add from .005" up to .025" to that measurement. Use that figure for the I.D. (inside diameter) of the ferrule.
- Measure the O.D. of the hose barb being used and make sure the hole size allows for enough clearance.
- Measure the barb length and allow for 0.50" to .100" extension of the barb's tail beyond the end of the ferrule.

PART #	I.D.	LENGTH	HOLE	METAL THICKNESS
B-275-S	0.275	0.500	0.217	0.020
32500	0.330	0.490	0.250	0.020
B-330-SP1	0.330	0.500	0.260	0.020
B-330-SP3	0.330	0.375	0.250	0.020
32501	0.358	0.500	0.265	0.020
B-375-S	0.375	0.437	0.265	0.025
32503	0.375	0.718	0.265	0.025
32502	0.380	0.500	0.265	0.020
B-400-S	0.400	0.437	0.265	0.025
32550	0.400	0.470	0.270	0.020
B-400-SP3	0.400	0.718	0.313	0.025
32505	0.405	0.718	0.265	0.020
32504	0.410	0.500	0.265	0.020
B-410-SP1	0.410	0.500	0.281	0.020
B-410-SP2	0.410	0.465	0.265	0.020
B-410-SP3	0.410	0.715	0.281	0.025
B-425-S	0.425	0.450	0.265	0.025
B-425-SP1	0.425	0.718	0.300	0.025
B-425-SP2	0.425	0.718	0.328	0.025
32551	0.450	0.562	0.343	0.020
B-450	0.450	0.720	0.270	0.020
B-450-S	0.450	0.500	0.265	0.025
B-450-SP1	0.450	0.718	0.270	0.025
B-450-SP10	0.450	1.000	0.245	0.025
B-450-SP5	0.450	0.718	0.250	0.025
B-450-SP6	0.450	1.000	0.330	0.025
B-450-SP9	0.450	0.718	0.328	0.020
B-475-LB	0.475	0.718	0.265	0.025
B-475-S	0.475	0.500	0.328	0.025
B-475-SP1	0.475	1.000	0.328	0.025
B-475-SP2	0.475	0.718	0.328	0.020
B-475-SP3	0.475	1.000	0.265	0.025
32552	0.478	0.687	0.328	0.025
B-500-S	0.500	0.500	0.328	0.025
32553	0.500	0.500	0.343	0.020
B-500-SP4	0.500	0.718	0.265	0.025
B-500-SP6	0.500	0.718	0.410	0.025
32506	0.500	1.000	0.343	0.025
32554	0.500	1.000	0.328	0.025
32555	0.525	0.470	0.360	0.020
B-525-SP10	0.525	0.500	0.406	0.020
B-525-S	0.525	0.500	0.406	0.025
32517	0.525	0.560	0.360	0.020
B-525-SP9	0.525	0.718	0.328	0.025
32556	0.525	1.000	0.375	0.025
32521	0.525	1.000	0.437	0.025
32557	0.531	1.000	0.375	0.025
32558	0.550	0.484	0.375	0.020
B-550-SP1-S	0.550	0.484	0.375	0.020
B-550-S	0.550	0.550	0.406	0.025
B-550-SP5	0.550	0.718	0.328	0.025
B-550-SP3	0.550	0.750	0.350	0.025

⚠️ WARNING: This product can expose you to chemicals, including chromium, which are known to the State of California to cause cancer. For more information, visit www.P65Warnings.ca.gov

EXPANDED PRODUCT LINE

BRASS HOSE FERRULES (Cont.)



CLAMPS & FERRULES

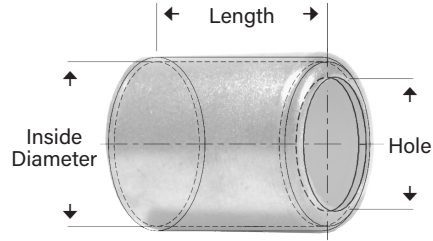
PART #	I.D.	LENGTH	HOLE	METAL THICKNESS
B-550-SP8	0.550	0.750	0.422	0.025
B-550-SP6	0.550	0.968	0.391	0.025
32507	0.560	0.750	0.375	0.020
B-560-SP2	0.560	0.750	0.375	0.020
32559	0.560	1.000	0.437	0.025
B-575-S	0.575	0.500	0.406	0.025
B-575-SP1	0.575	0.484	0.468	0.020
32561	0.593	1.000	0.437	0.025
B-600-SP7	0.600	0.375	0.391	0.025
B-600-SP3	0.600	0.500	0.406	0.025
B-600-SP2	0.600	0.500	0.500	0.025
B-600-S	0.600	0.550	0.453	0.020
B-600-SP5	0.600	0.718	0.391	0.020
B-600-SP1	0.600	0.968	0.350	0.025
B-600-SP4	0.600	0.968	0.391	0.025
32526	0.625	0.500	0.500	0.025
B-625-S	0.625	0.550	0.453	0.025
B-625-SP5	0.625	0.968	0.265	0.025
B-625-SP6	0.625	1.000	0.265	0.025
B-625-SP7	0.625	1.000	0.375	0.025
32564	0.625	1.000	0.437	0.025
B-625-SP8	0.625	1.000	0.500	0.025
B-650-SP2	0.650	0.500	0.406	0.025
B-650-S	0.650	0.500	0.453	0.025
32565	0.650	0.500	0.500	0.020
B-656-SP1	0.656	1.000	0.332	0.025
32566	0.656	1.000	0.437	0.025
B-675-S	0.675	0.500	0.500	0.025
32567	0.675	0.515	0.500	0.020
B-675-SP1	0.675	0.625	0.500	0.025
B-675-SP3	0.675	0.968	0.453	0.025
B-675-SP5	0.675	0.968	0.590	0.025
32568	0.690	1.000	0.500	0.025
B-700-S	0.700	0.575	0.500	0.025
B-700-SP1	0.700	0.625	0.453	0.025
B-700-SP2	0.700	0.968	0.406	0.025
B-700-SP6	0.700	0.968	0.562	0.025
32570	0.718	1.000	0.500	0.025
32508	0.718	1.000	0.625	0.025
32571	0.725	0.530	0.500	0.020
B-725-S	0.725	0.550	0.500	0.025
32572	0.750	0.531	0.500	0.020
B-750-SP5	0.750	0.531	0.500	0.020
B-750-SP1	0.750	0.875	0.438	0.025
32510	0.750	1.000	0.500	0.025
32573	0.750	1.000	0.625	0.025
B-775-S	0.775	0.500	0.593	0.025
32574	0.775	0.531	0.500	0.020
32533	0.781	1.000	0.500	0.025
32575	0.781	1.000	0.625	0.025
B-800-S	0.800	0.500	0.593	0.025
32576	0.800	0.546	0.562	0.020

PART #	I.D.	LENGTH	HOLE	METAL THICKNESS
B-812-SP1	0.812	1.000	0.420	0.025
32577	0.812	1.000	0.625	0.025
32578	0.825	0.546	0.562	0.020
B-825-S	0.825	0.550	0.687	0.025
B-825-SP1	0.825	0.968	0.506	0.025
B-825-SP4	0.825	0.968	0.593	0.025
B-850-S	0.850	0.550	0.687	0.025
32535	0.850	0.968	0.687	0.025
B-875-S	0.875	0.500	0.750	0.025
B-875-SP3	0.875	0.530	0.750	0.020
32579	0.875	0.843	0.687	0.025
B-875-SP2	0.875	0.968	0.500	0.025
B-900-S	0.900	0.550	0.750	0.025
B-900-SP4	0.900	0.562	0.750	0.020
32539	0.900	0.875	0.687	0.025
B-900-SP3	0.900	0.968	0.593	0.025
B-925-S	0.925	0.550	0.750	0.025
B-925-SP1	0.925	0.843	0.687	0.025
B-925-SP2	0.925	0.968	0.593	0.025
32580	0.925	0.968	0.750	0.025
B-925-SP3	0.925	1.000	0.540	0.025
B-950-S	0.950	0.500	0.750	0.025
B-950-SP2	0.950	0.750	0.750	0.025
32543	0.975	0.843	0.687	0.025
B-975-SP4	0.975	0.968	0.625	0.040
B-1000-SP4	1.000	0.593	0.750	0.020
32545	1.000	0.843	0.687	0.025
B-1025-SP1	1.025	0.843	0.687	0.025
32549	1.050	0.843	0.687	0.025
B-1100-SP1	1.100	0.687	0.875	0.025
32584	1.100	0.843	0.812	0.025
B-1125-SP2	1.125	0.625	0.875	0.025
B-1125-SP1	1.125	0.875	0.875	0.025
B-1150-SP1	1.150	0.625	0.875	0.020
32586	1.150	0.843	0.875	0.025
B-1175-SP2	1.175	0.625	0.875	0.020
32588	1.175	0.875	0.875	0.025
B-1200-SP1	1.200	0.750	1.000	0.025
32590	1.200	0.843	0.875	0.025
B-1200-SP1	1.200	0.968	1.000	0.025
B-1225-S	1.225	0.781	1.094	0.025
32591	1.225	0.968	0.875	0.025
B-1250-SP1	1.250	0.875	1.000	0.025
32592	1.250	0.968	1.000	0.040
B-1275-SP1	1.275	0.968	0.875	0.025
B-1380-S	1.380	0.843	1.047	0.025
32596	1.425	0.875	1.062	0.025
B-1437-SP1	1.437	0.968	1.047	0.040
B-1468-S	1.468	0.812	1.125	0.025
B-1468-SP1	1.468	1.215	1.125	0.040
32597	1.500	0.875	1.125	0.025
B-1525-S	1.525	0.812	1.125	0.025

⚠️ WARNING: This product can expose you to chemicals, including chromium, which are known to the State of California to cause cancer. For more information, visit www.P65Warnings.ca.gov

EXPANDED PRODUCT LINE

ALUMINUM HOSE FERRULES



Features

- Aluminum Hose Ferrules are resistant to corrosion, lightweight, and flexible.

Specifications

- Material: 3003 and 5052 Aluminum

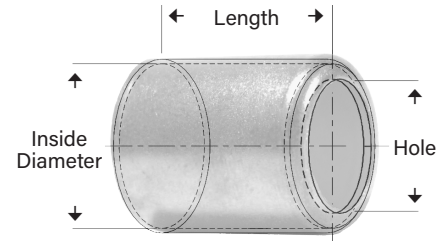
PART #	I.D.	LENGTH	HOLE	METAL THICKNESS
A-330-S	0.330	0.490	0.250	0.025
A-350-S	0.350	0.500	0.220	0.025
A-375-L	0.375	0.718	0.265	0.025
A-375-SP1	0.375	0.718	0.312	0.025
A-400-L	0.400	0.718	0.265	0.025
A-410-SP1	0.410	0.500	0.281	0.025
A-425-L	0.425	0.718	0.265	0.025
A-425-SP1	0.425	0.718	0.300	0.025
A-425-SP2	0.425	0.718	0.328	0.025
A-450-S	0.450	0.500	0.265	0.025
A-450-SP1	0.450	0.718	0.270	0.025
A-450-L	0.450	0.718	0.328	0.025
A-475-S	0.475	0.500	0.328	0.025
A-475-L	0.475	0.718	0.328	0.025
A-480-L	0.480	0.750	0.300	0.025
A-500-S	0.500	0.500	0.328	0.025
A-500-L	0.500	0.718	0.328	0.025
A-500-SP5	0.500	0.718	0.400	0.025
A-525-S	0.525	0.500	0.406	0.025
A-525-SP1	0.525	0.500	0.425	0.025
A-525-SP11	0.525	0.562	0.328	0.025
A-525-SP9	0.525	0.718	0.328	0.025
A-525-L	0.525	0.718	0.406	0.025
A-550-S	0.550	0.550	0.406	0.025
A-550-SP5	0.550	0.718	0.328	0.025
A-550-L	0.550	0.718	0.406	0.025
A-575-S	0.575	0.500	0.406	0.025
A-575-L	0.575	0.968	0.406	0.025
A-600-SP1	0.600	0.468	0.453	0.025
A-600-S	0.600	0.550	0.453	0.025
A-600-L	0.600	0.968	0.453	0.025
A-605-L-SP	0.605	1.400	0.380	0.063
A-625-S	0.625	0.550	0.453	0.025
A-625-L	0.625	0.968	0.453	0.025
A-650-S	0.650	0.500	0.453	0.025
A-650-SP5	0.650	0.718	0.484	0.025
A-650-L	0.650	0.968	0.453	0.025
A-675-S	0.675	0.500	0.500	0.025
A-675-L	0.675	0.968	0.500	0.025
A-700-S	0.700	0.575	0.500	0.025
A-700-L	0.700	0.968	0.500	0.025
A-710-L-SP	0.710	1.400	0.485	0.063
A-725-S	0.725	0.550	0.500	0.025
A-725-L	0.725	0.968	0.500	0.025
A-750-S	0.750	0.550	0.500	0.025
A-750-L	0.750	0.968	0.500	0.025

PART #	I.D.	LENGTH	HOLE	METAL THICKNESS
A-775-S	0.775	0.500	0.593	0.025
A-775-L	0.775	0.968	0.593	0.025
A-780-L-SP	0.780	1.400	0.380	0.063
A-790-L-SP	0.790	1.400	0.615	0.063
A-800-S	0.800	0.500	0.593	0.025
A-800-L	0.800	0.968	0.593	0.025
A-825-S	0.825	0.550	0.687	0.025
A-825-SP3	0.825	0.968	0.500	0.025
A-825-L	0.825	0.968	0.687	0.025
A-850-S	0.850	0.550	0.687	0.025
A-850-L	0.850	0.968	0.687	0.025
A-870-L	0.870	1.000	0.670	0.025
A-875-S	0.875	0.500	0.750	0.025
A-875-L	0.875	0.968	0.750	0.025
A-900-S	0.900	0.550	0.750	0.025
A-900-L	0.900	0.968	0.750	0.025
A-925-S	0.925	0.550	0.750	0.025
A-925-L	0.925	0.968	0.750	0.025
A-940-L-SP	0.940	1.400	0.485	0.063
A-950-S	0.950	0.500	0.750	0.025
A-950-SP3	0.950	0.968	0.625	0.025
A-950-SP6	0.950	0.968	0.625	0.040
A-950-L	0.950	0.968	0.750	0.025
A-975-L	0.975	0.968	0.875	0.040
A-980-L-SP	0.980	1.400	0.710	0.063
A-1000-L	1.000	0.968	0.875	0.040
A-1025-L	1.025	0.968	0.875	0.040
A-1040-L-SP	1.040	1.400	0.615	0.063
A-1050-L	1.050	0.968	0.875	0.040
A-1075-L	1.075	0.968	0.875	0.040
A-1100-L	1.100	0.968	0.875	0.040
A-1125-SP1	1.125	0.875	0.875	0.025
A-1125-L	1.125	0.968	0.875	0.040
A-1150-L	1.150	0.968	0.875	0.040
A-1165-L-SP	1.165	1.400	0.710	0.063
A-1175-SP1	1.175	0.875	0.875	0.025
A-1175-L	1.175	0.968	0.875	0.040
A-1200-L	1.200	0.968	1.000	0.040
A-1225-L	1.225	0.968	1.000	0.040
A-1250-L	1.250	0.968	1.000	0.040
A-1325-L	1.325	0.968	1.047	0.040
A-1350-L	1.350	1.250	1.125	0.040
A-1380-S	1.380	0.843	1.047	0.025
A-1425-SP1	1.425	0.875	1.062	0.025
A-1437-SP1	1.437	0.968	1.047	0.040
A-1468-S	1.468	0.812	1.125	0.025
A-1500-L	1.500	1.000	1.125	0.040

⚠️ **WARNING:** This product can expose you to chemicals, including chromium, which are known to the State of California to cause cancer. For more information, visit www.P65Warnings.ca.gov

EXPANDED PRODUCT LINE

STEEL HOSE FERRULES



Specifications

- Material: Low Carbon 1008 Steel
- Hardness: 30-55 Rockwell Scale

PART #	I.D.	LENGTH	HOLE	METAL THICKNESS
S-330-S	0.330	0.490	0.250	0.020
S-330-SP1	0.330	0.500	0.260	0.020
S-358-S	0.358	0.500	0.265	0.020
S-380-S	0.380	0.500	0.265	0.020
S-400-SP2	0.400	0.470	0.270	0.020
S-410-S	0.410	0.500	0.265	0.020
S-425-S	0.425	0.450	0.265	0.025
S-425-SP1	0.425	0.718	0.300	0.025
S-425-SP2	0.425	0.718	0.328	0.025
S-450-SP1-S	0.450	0.562	0.343	0.020
S-450-SP9	0.450	0.718	0.328	0.020
S-450-L	0.450	0.718	0.328	0.025
S-450-SP6	0.450	1.000	0.330	0.025
S-475-S	0.475	0.500	0.328	0.025
S-475-LB	0.475	0.718	0.265	0.025
S-475-L	0.475	0.718	0.328	0.025
S-475-SP3	0.475	1.000	0.265	0.025
32552SS	0.478	0.687	0.328	0.020
S-500-SP4	0.500	0.718	0.265	0.025
S-500-L	0.500	0.718	0.328	0.025
S-525-SP9	0.525	0.718	0.328	0.025
S-525-L	0.525	0.718	0.406	0.025
S-525-SP3	0.525	1.000	0.375	0.025
32557SS	0.531	1.000	0.438	0.020
S-550-SP1-S	0.550	0.484	0.375	0.020
S-550-S	0.550	0.550	0.406	0.025
S-550-SP5	0.550	0.718	0.328	0.025
S-550-L	0.550	0.718	0.406	0.025
S-550-SP6	0.550	0.968	0.391	0.025
S-560-SP2	0.560	0.750	0.375	0.020
S-560-L	0.560	1.000	0.375	0.025
32559SS	0.560	1.000	0.437	0.020
S-575-S	0.575	0.500	0.406	0.025
S-575-L	0.575	0.968	0.406	0.025
32561SS	0.593	1.000	0.437	0.020
S-593-L	0.593	1.000	0.437	0.025
S-600-SP3	0.600	0.500	0.406	0.025
S-600-SP2	0.600	0.500	0.500	0.020
S-600-SP5	0.600	0.718	0.391	0.020
S-605-SP6	0.605	1.400	0.380	0.033

PART #	I.D.	LENGTH	HOLE	METAL THICKNESS
S-625-L	0.625	0.968	0.453	0.025
S-625-SP7	0.625	1.000	0.375	0.025
32564SS	0.625	1.000	0.437	0.020
S-625-SP4	0.625	1.000	0.437	0.025
S-650-S	0.650	0.500	0.453	0.025
S-650-SP1	0.650	0.750	0.455	0.020
S-650-L	0.650	0.968	0.453	0.025
32566SS	0.656	1.000	0.437	0.020
S-656-L	0.656	1.000	0.437	0.025
S-675-L	0.675	0.968	0.500	0.025
32568SS	0.690	1.000	0.500	0.020
S-690-L	0.690	1.000	0.500	0.025
S-700-SP4	0.700	0.530	0.500	0.020
S-700-L	0.700	0.968	0.500	0.025
S-710-SP6	0.710	1.400	0.485	0.033
S-718-SP1	0.718	1.000	0.500	0.025
32570SS	0.718	1.000	0.625	0.020
S-725-L	0.725	0.968	0.500	0.025
S-765-L-PHLS	0.765	1.400	0.380	0.033
32575SS	0.781	1.000	0.625	0.020
S-790-SP6	0.790	1.400	0.615	0.033
S-800-L	0.800	0.968	0.593	0.025
32577SS	0.812	1.000	0.625	0.020
S-812-L	0.812	1.000	0.625	0.025
S-850-SP1	0.850	0.968	0.593	0.025
S-850-L	0.850	0.968	0.687	0.025
S-900-L	0.900	0.968	0.750	0.025
S-925-L	0.925	0.968	0.750	0.025
S-925-SP20	0.925	1.000	0.540	0.025
S-925-L-PHLS	0.925	1.400	0.485	0.033
S-960-SP6	0.960	1.400	0.660	0.033
S-1032-L-PHLS	1.032	1.400	0.615	0.033
S-1075-L	1.075	0.968	0.875	0.033
S-1125-SP1	1.125	0.875	0.875	0.025
S-1150-SP2	1.150	0.843	0.875	0.025
S-1150-L-PHLS	1.150	1.400	0.710	0.033
32588SS	1.175	0.844	0.875	0.020
S-1175-L	1.175	0.968	0.875	0.033
S-1250-L	1.250	0.968	1.000	0.033
S-1380-S	1.380	0.843	1.047	0.025
S-1468-L	1.468	1.250	1.125	0.033

WARNING: This product can expose you to chemicals, including chromium, which are known to the State of California to cause cancer. For more information, visit www.P65Warnings.ca.gov